

St Hilda's Primary School
Primary 3
Science
Term 2 Weighted Assessment, 2024

| | |
|-------------|----|
| Section A | 18 |
| Section B | 12 |
| Total Score | 30 |

Name: _____ ()

Class: P3 / _____

Duration: 45 minutes

Total no. of pages: 12

Date: 3 May 2024

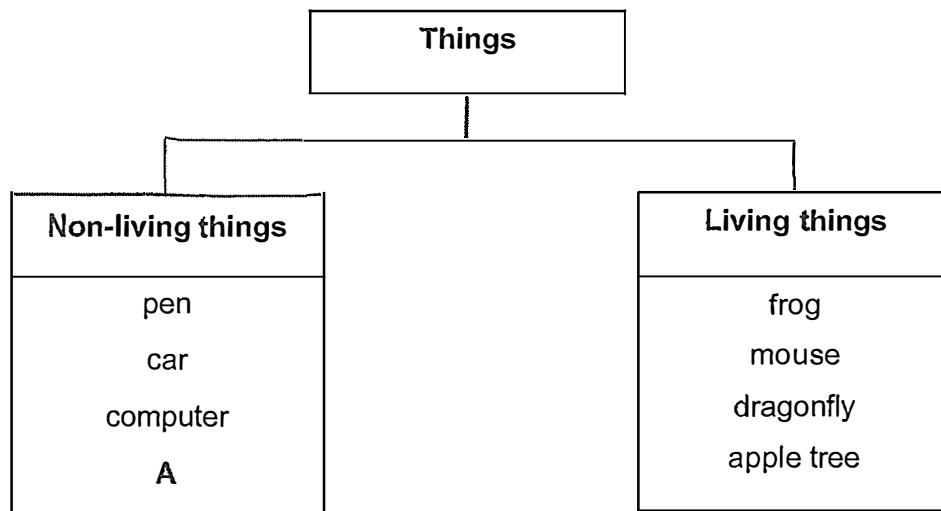
Section A: 18 Marks

Parent's Signature: _____

For questions 1 to 9, write your answer (1, 2, 3 or 4) in the bracket provided.

[2 marks each]

- 1 Study the classification table below.



Which of the following best represent A?

- (1) brush
- (2) reptile
- (3) mould
- (4) bacteria

()

| | |
|-------|---|
| SCORE | 2 |
|-------|---|

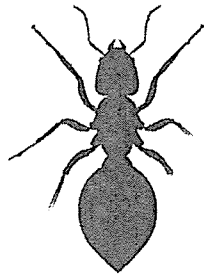
- 2 John was given two hamsters. After a year, he has ten hamsters in total even though no one gave him anymore hamsters. This is because the hamsters

_____.

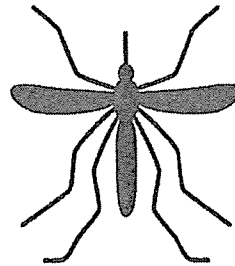
- (1) can die
- (2) can grow
- (3) can reproduce
- (4) can respond to changes around them

()

- 3 The diagram below shows two animals.



ant



mosquito

The two animals are classified in the same group because both of them

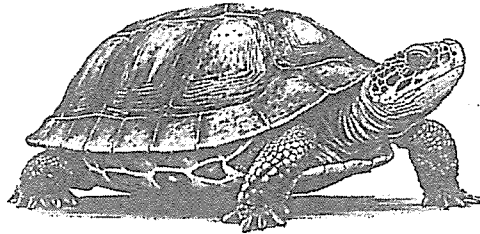
_____.

- (1) have wings
- (2) have a beak
- (3) have six legs
- (4) have feathers

()

| | |
|-------|---|
| SCORE | 4 |
|-------|---|

4 Study the animal below.



The animal above is classified as a reptile. Explain why.

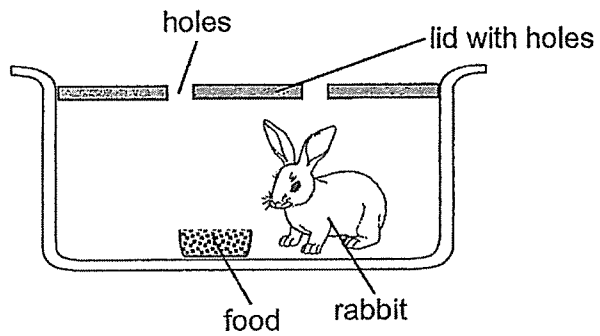
- (1) It has a hard shell.
- (2) It has three body parts.
- (3) It has dry skin with scales.
- (4) It breathes through moist skin.

()

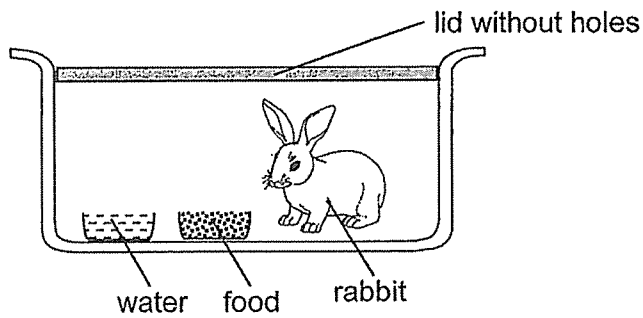
| | |
|-------|---|
| SCORE | 2 |
|-------|---|

- 5 Jane placed a similar rabbit in four different containers as shown in the diagram below. In which container would the rabbit live the longest?

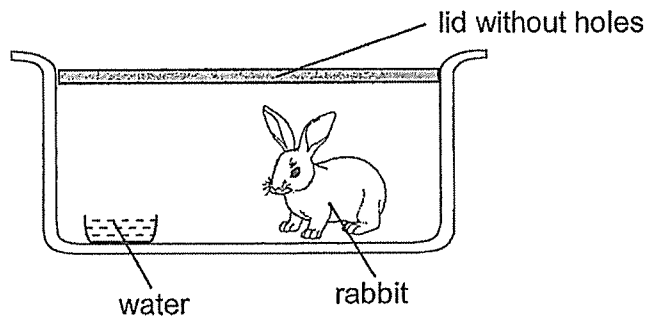
(1)



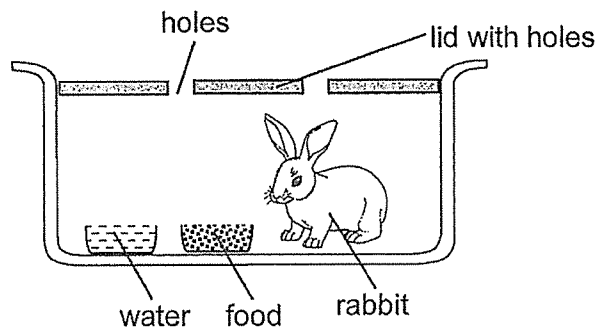
(2)



(3)



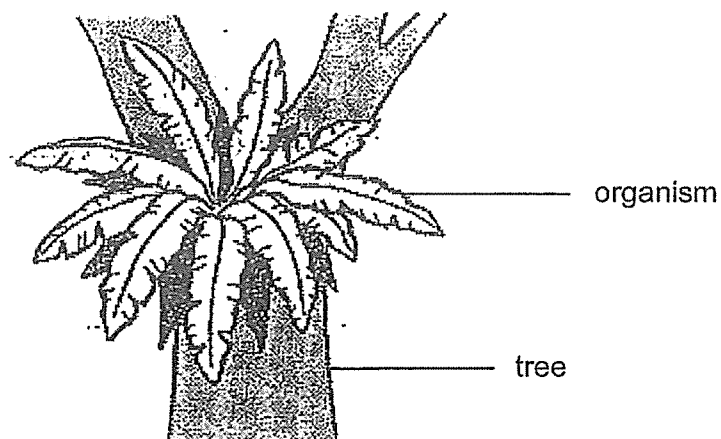
(4)



()

| | |
|-------|---|
| SCORE | 2 |
|-------|---|

- 6 The diagram below shows an organism found on a tree.



Which one of the following organisms, P, Q, R or S, represents the organism found on the tree in the diagram above?

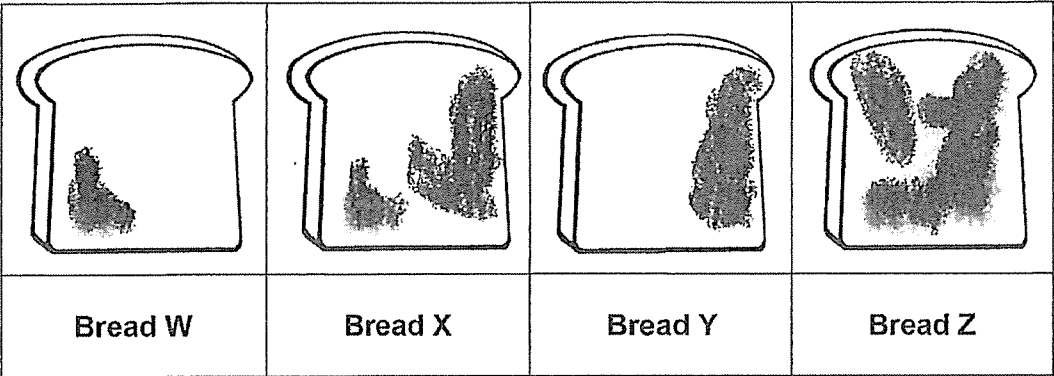
A tick (✓) shows that the organism has that characteristic.

| | Organism | Characteristics | | |
|-----|----------|--------------------|-------------|------------|
| | | Makes its own food | Has flowers | Has spores |
| (1) | P | | | ✓ |
| (2) | Q | ✓ | | |
| (3) | R | ✓ | ✓ | |
| (4) | S | ✓ | | ✓ |

()

- 7 Lucas wanted to find out if different amounts of water would affect the growth of the bread mould on similar slices of bread. All the bread slices W, X, Y and Z were sprayed with different amounts of water and then placed on the table for two weeks.

The diagram below shows the different amount of mould growing on the bread slices after two weeks.



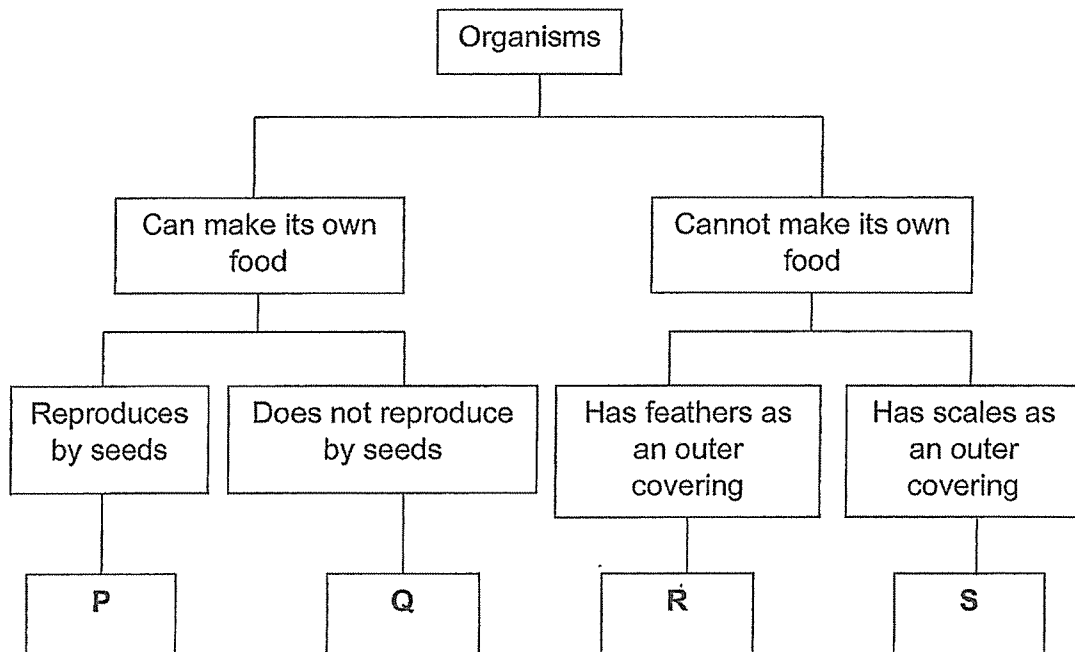
Which one of the following represent the amount of water sprayed on each slice of bread?

| Amount of water sprayed on the bread (ml) | | | | |
|---|----|----|----|----|
| | W | X | Y | Z |
| (1) | 10 | 80 | 50 | 30 |
| (2) | 10 | 50 | 30 | 80 |
| (3) | 30 | 50 | 10 | 80 |
| (4) | 80 | 10 | 30 | 50 |

()

| | |
|-------|---|
| SCORE | 2 |
|-------|---|

- 8 Four organisms, P, Q, R and S, are classified according to the flowchart below.



Based on the flowchart above, which of the following statements is true?

- (1) Both P and Q are plants.
- (2) P is a plant while Q is a fungi. ✓
- (3) Q is a mammal while S is an insect.
- (4) R is a bird while S is an amphibian.

()

| | |
|-------|---|
| SCORE | 2 |
|-------|---|

- 9 The table below shows some characteristics in which animals X, Y and Z have. A tick (✓) shows that the animal has the characteristics.

| Animal | Has scales | Lay eggs | Has gills |
|--------|------------|----------|-----------|
| X | ✓ | ✓ | |
| Y | | ✓ | |
| Z | ✓ | ✓ | ✓ |

Which of the following animals are correctly identified for X, Y and Z?

| | X | Y | Z |
|-----|---------|---------|---------|
| (1) | Fish | Frog | Penguin |
| (2) | Penguin | Fish | Snake |
| (3) | Snake | Penguin | Fish |
| (4) | Frog | Fish | Penguin |

()

| | |
|-------|---|
| SCORE | 2 |
|-------|---|

Section B: 12 marks

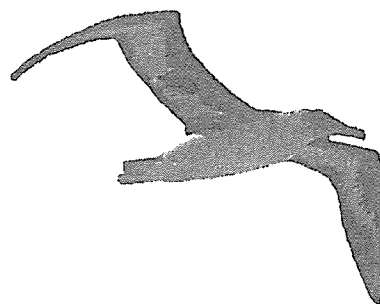
For questions 10 to 13, write your answers in this booklet.

The number of marks available is shown in brackets [] at the end of each question or part question.

- 10** Study the animals below.



animal X



animal Y

- (a) Based on the diagram, state an observable similarity in body parts between animal X and animal Y. Do not mention colour, size and shape. [1]

- (b) What is the outer body covering of animal X? [1]

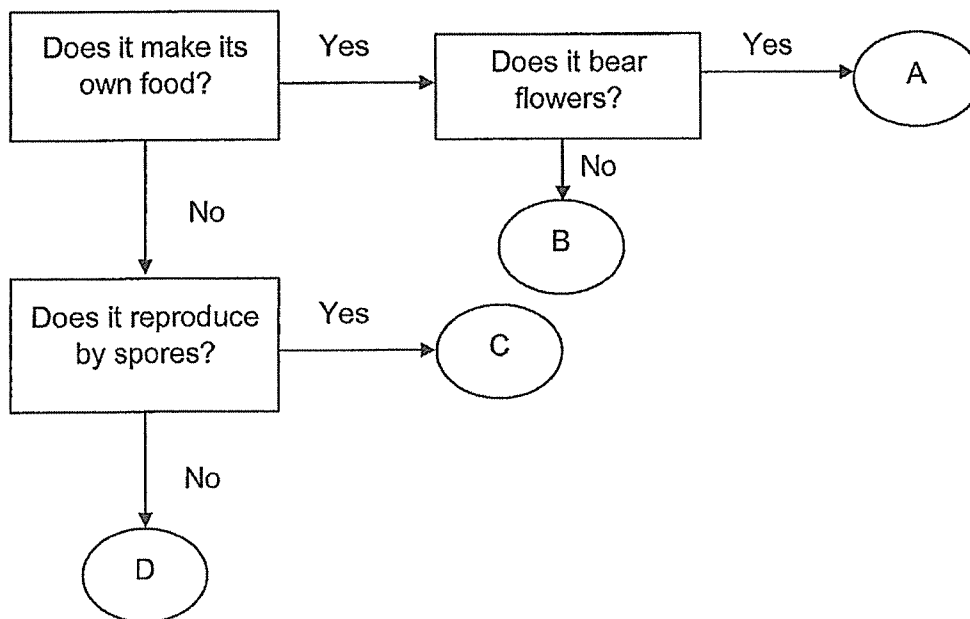
- (c) Which main group of animals do animal X and Y belong to? [1]

Animal X: _____

Animal Y: _____

| | |
|-------|---|
| SCORE | 3 |
|-------|---|

- 11 The flowchart below shows how organisms, A, B, C, and D, are classified. Use the information from the flowchart to answer the questions below.



- (a) Which main group of living things can organism A be classified under? [1]

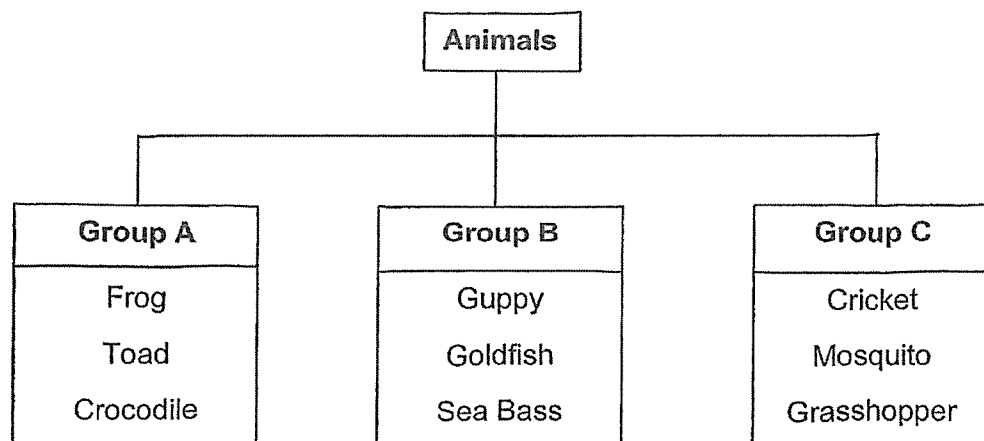
- (b) Based on the flowchart, state a difference between organisms C and D. [1]

- (c) Based on the flowchart, write the correct letter, A, B, C or D to represent the organisms in the table below. [1]

| Name of organism | Letter |
|------------------|--------|
| Mushroom | |
| Bird's Nest Fern | |

| | |
|-------|---|
| SCORE | 3 |
|-------|---|

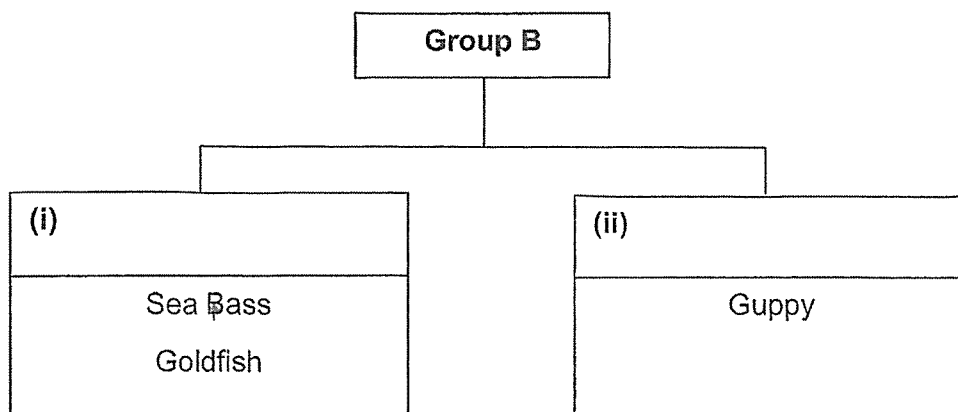
12 Study the classification table below.



- (a) Based on the characteristics of the animals, name the animal in group A which is wrongly classified. Explain why. [1]

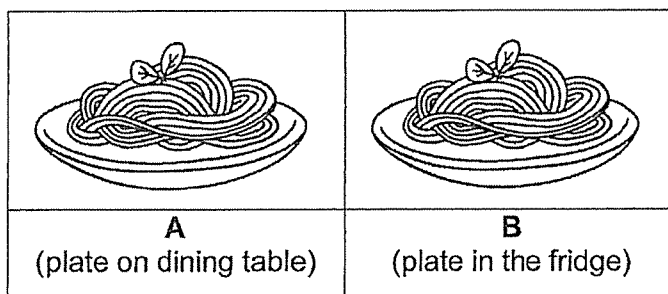
- (b) Which group can a cockroach be placed in? Give a reason for your answer. [1]

- (c) The animals in group B are re-grouped into two smaller groups in the classification table as shown below. Write a suitable heading for each smaller group. [1]



| | |
|-------|---|
| SCORE | 3 |
|-------|---|

- 13 Lenon conducted an experiment with the following two set-ups. He placed one plate of noodles on the dining table and the other similar plate in the fridge for a week as shown below.



A week later, he observed that more bacteria were growing on the noodle that was placed on the dining table.

- (a) Based on his observation, state one characteristic of bacteria as living things. [1]

- (b) To conduct a fair experiment, tick (✓) the correct boxes for the variables which must be changed, measured, or kept constant. [2]

| Variables | Changed variable | Measured variable | Constant variable |
|--|------------------|-------------------|-------------------|
| Location of the plate of noodles | | | |
| Amount of bacteria growth on the noodles | | | |
| Type of noodles | | | |
| Amount of noodles | | | |

| | |
|-------|---|
| SCORE | 3 |
|-------|---|

END OF PAPER

ST. HILDA'S PRIMARY SCHOOL
PRIMARY 3 SCIENCE
TERM 2 WEIGHTED ASSESSMENT, 2024
(Simplified Answer Key)

Section A

| | | | |
|----|---|----|---|
| 1. | 1 | 6. | 4 |
| 2. | 3 | 7. | 2 |
| 3. | 3 | 8. | 1 |
| 4. | 3 | 9. | 3 |
| 5. | 4 | | |

Section B

This simplified answer key only provides a reference and the key concepts have been bolded. Variation of students' answers have been accepted if they have shown conceptual understanding.

| | |
|--------|---|
| 10 (a) | Both have wings/legs . |
| 10 (b) | Hair/fur |
| 10 (c) | Animal X: Mammal Animal Y: Bird |
| 11 (a) | Plant |
| 11 (b) | Organism C reproduce by spores but Organism D does not. |
| 11 (c) | Mushroom: C Bird's Nest Fern: B |
| 12 (a) | Crocodile .Crocodile has dry skin with scales but the rest have moist skin . |
| 12 (b) | Group C. It has three body parts/six legs like the rest. |
| 12 (c) | <div style="text-align: center;"> <div style="border: 1px solid black; padding: 5px; width: fit-content; margin: 0 auto;">Group B</div> <div style="display: flex; justify-content: space-around; margin-top: 10px;"> <div style="border: 1px solid black; padding: 5px; width: 45%;"> <div style="text-align: center; border-bottom: 1px solid black; padding-bottom: 5px;">(i) Lay eggs</div> <div style="padding: 5px;">Sea Bass</div> <div style="padding: 5px;">Goldfish</div> </div> <div style="border: 1px solid black; padding: 5px; width: 45%;"> <div style="text-align: center; border-bottom: 1px solid black; padding-bottom: 5px;">(ii) Give birth to young</div> <div style="padding: 5px;">Guppy</div> </div> </div> </div> |

| | | | | |
|--------|--|-------------------------|--------------------------|--------------------------|
| 13 (a) | Bacteria can reproduce. | | | |
| 13 (b) | Variables | Changed variable | Measured variable | Constant variable |
| | Location of the plate of noodles | ✓ | | |
| | Amount of bacteria growth on the noodles | | ✓ | |
| | Type of noodles | | | ✓ |
| | Amount of noodles | | | ✓ |