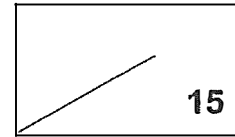


**NANYANG PRIMARY SCHOOL**  
**Term 2 Weighted Assessment**  
**Science**  
**Primary 3**



Name: \_\_\_\_\_ (     )     Date: \_\_\_\_\_

Class: 3 \_\_\_\_\_     Parent's signature: \_\_\_\_\_

---

**Dear Parent/Guardian,**

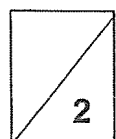
**Please sign the Weighted Assessment paper and have your child/ward return it the next day. Any query should be raised at the same time when returning the paper.**

**Section A: Multiple Choice Questions (10 marks)**

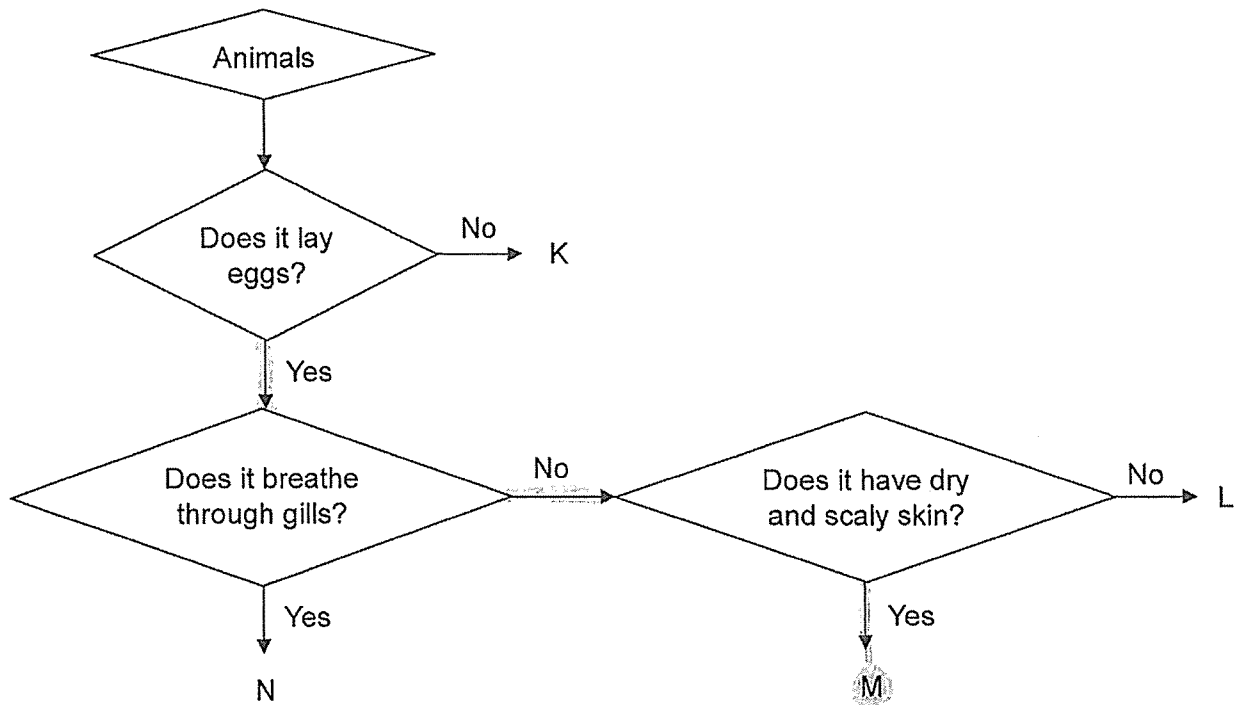
*For each question from 1 to 5, four options (1, 2, 3 and 4) are given. One of them is the correct answer. **Indicate your choice in the brackets provided.***

1. Which characteristic is found in both insects and birds?
- (1) Both animals have six legs.
  - (2) Both animals have three body parts.
  - (3) Both animals reproduce by laying eggs.
  - (4) Both animals have the same type of outer covering.

(     )



2. Study the flowchart below.



Based on the flowchart above, which letter, K, L, M or N, best represents reptiles?

- (1) K
- (2) L
- (3) M
- (4) N

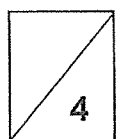
( )

3. Which of the following statement(s) is/are correct about all bacteria and fungi?

- A Both can make its own food.
- B Both can be useful or harmful to us.
- C Both do not need air, food and water to survive.

- (1) B only
- (2) C only
- (3) A and B only
- (4) A and C only

( )



4. The table below shows the properties of four materials, J, K, L and M.

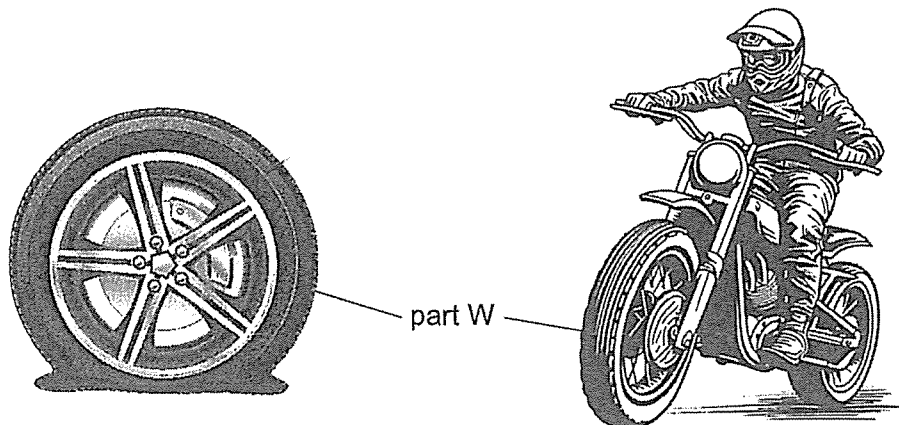
Property	Material J	Material K	Material L	Material M
Is it strong?	No	Yes	Yes	Yes
Is it flexible?	No	Yes	No	Yes
Does it allow most light to pass through it?	Yes	Yes	Yes	No

Based on the properties above, which material is most suitable for making a pair of school shorts?

- (1) Material J
- (2) Material K
- (3) Material L
- (4) Material M

( )

5. The diagram below shows a wheel. Air must be pumped into part W before it is used as part of the vehicle.



Which of the following properties of part W must be present to allow users to move easily over rocky and rough surfaces?

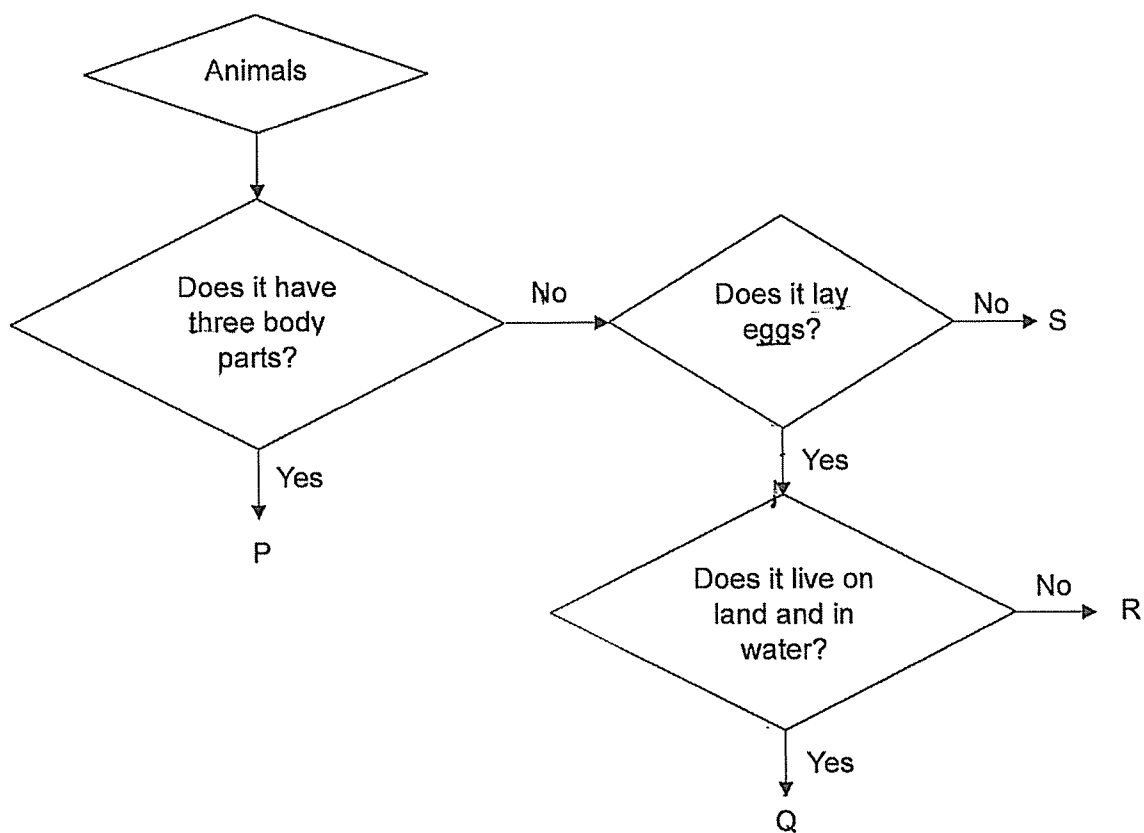
- (1) W must be strong and flexible.
- (2) W must be strong and can float on water.
- (3) W must be strong and allows light to pass through.
- (4) W must be flexible and allows most light to pass through.

( )

**Section B: Open-Ended Questions (5 marks)**

For questions 6 and 7, fill in your answers in the spaces provided.

6. The flow chart below shows how some animals are classified.



(a) Based only on the flow chart above, state all the similar characteristics of animals Q and R. [1]

---

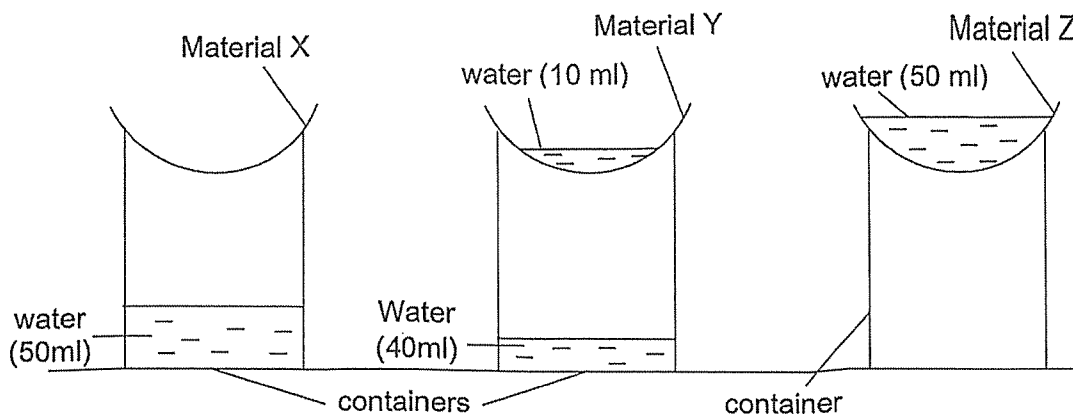
---

(b) Based only on the flow chart above, state a difference between animals P and S. [1]

---

---

7. Eric wanted to find out which material is most suitable to make a raincoat. He placed similar sheets of materials X, Y and Z over three similar containers. He then poured 50 ml of water onto each material.



10 minutes later, the amount of water collected in each container is shown as below.

	Amount of water poured onto the material (ml)	Amount of water collected in the container (ml)
Material X	50	50
Material Y	50	40
Material Z	50	0

- (a) Based on the results above, which material, X, Y or Z, is most suitable to make a raincoat? Explain your answer. [2]

---

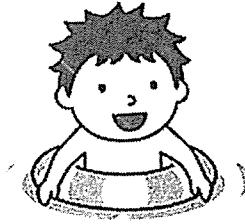


---



---

Eric used one of the materials to make a float. Air must be blown into the float before it can keep children afloat in the water.



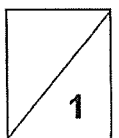
(b) Give a reason why the float must be strong.

[1]

---

---

- End of Paper -



Nanyang Primary School  
P3 SCIENCE WA2 2024  
Answer Key

**Section A**

Qn	Answer
1	3
2	3
3	1
4	4
5	1

**Section B**

Qn	Answer
6a.	(Both) Q and R lay eggs and do not have 3 body parts.
6b.	P has 3 body parts but S does not have 3 body parts.
7a.	M: Z P: It is waterproof as it collects the least amount of water in the container F: A raincoat helps the user to stay dry on a rainy day
7b.	The float must be able to support the child's weight without bursting easily.

