



Anglo-Chinese School  
(Primary)

A Methodist Institution  
(Founded 1886)

Mathematics  
Weighted Assessment  
2023  
Quiz 1  
Paper 1

Name: \_\_\_\_\_ ( ) Date: \_\_\_\_\_

Class: Pr 5 \_\_\_

Duration: 10 minutes

**INSTRUCTIONS TO CANDIDATES**

1. This question paper consists of 3 printed pages, including the cover page.
2. Do not turn this page until you are told to do so.
3. Follow all instructions carefully.
4. Answer all questions.
5. You are not allowed to use a calculator.

Section	Maximum Marks	Marks Obtained
Paper 1 MCQ and Short Answers	5	
Paper 2 Problem Sums	15	
Total Marks	20	



**Section A:**

Questions 1 and 2 carry 1 mark each. For each question, four options are given. One of them is the correct answer. Choose the correct answer and write its number in the brackets provided. (2 marks)

---

1. Which one of the following is five hundred and eight thousand and thirty-two in numerals?

1) 58 032

2) 508 032

3) 5 008 032

4) 5 080 032

(            )

2. Find the value of  $560\,000 \div 700$ .

1) 80

2) 800

3) 8000

4) 80 000

(            )

**Section B:**

Questions 3 carries 1 mark. Question 4 carries 2 marks. Show your mathematical statements clearly in the space provided for each question. Write your answers in the spaces provided. Give your answers to the units stated and to its simplest form whenever necessary. (3 marks)

---

3. Write 7 090 042 in words.

Ans: \_\_\_\_\_  
\_\_\_\_\_

4. John had 75 stamps. 12 of his friends took 3 stamps each. John and his 2 siblings then shared the rest of the stamps equally among themselves. Each of the statements is either true or false from the information given. For each statement, put a tick (✓) to indicate your answer.

Statement	True	False
John had $(75 - 12 \times 3)$ stamps left.		
John had $(75 - 12 \times 3 + 3)$ stamps in the end.		

- End of Paper 1 -



Anglo-Chinese School  
(Primary)

A Methodist Institution  
(Founded 1886)

Mathematics  
Weighted Assessment  
2023  
Quiz 1  
Paper 2

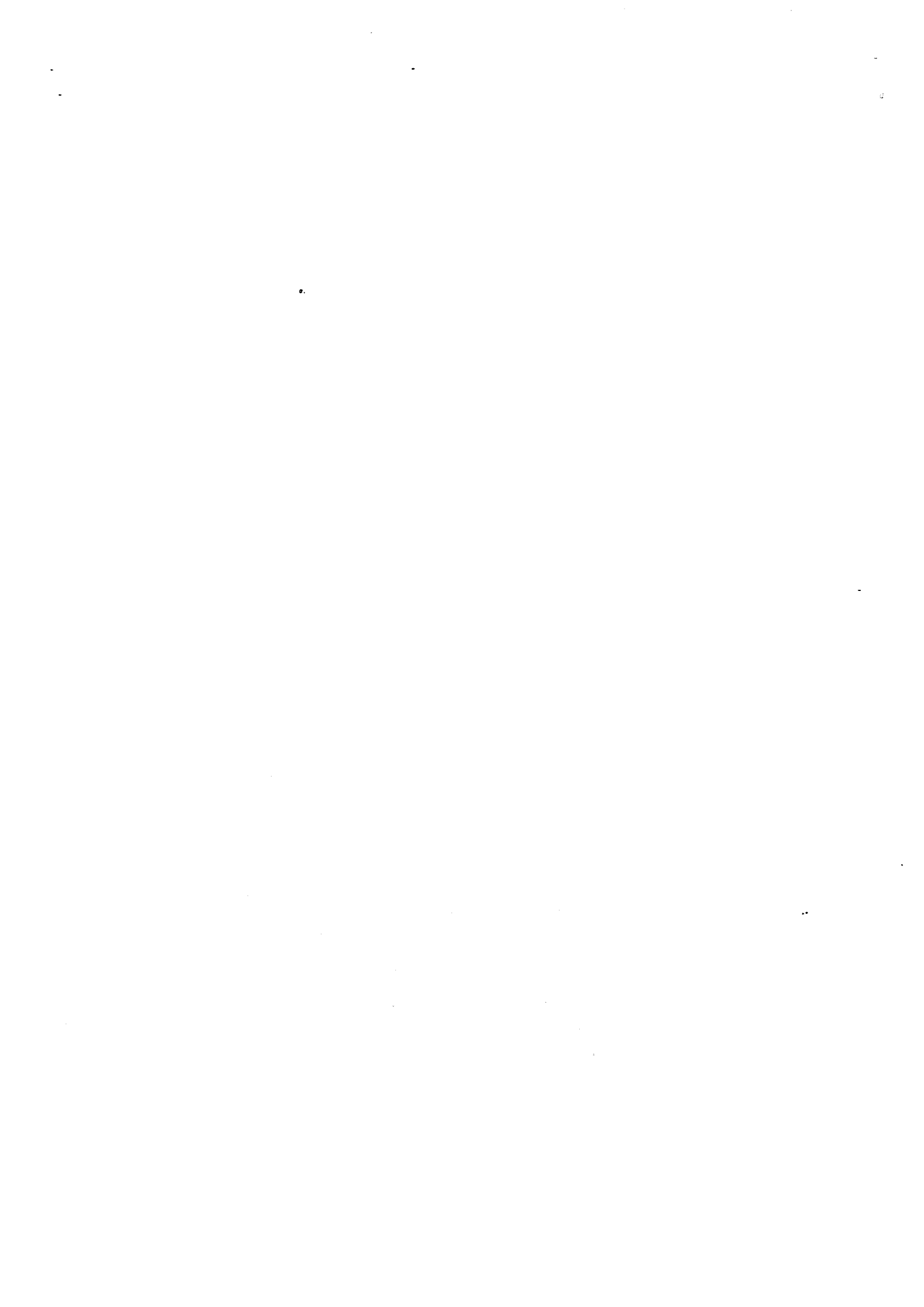
Name: \_\_\_\_\_ (       )       Date: \_\_\_\_\_

Class: Pr 5 \_\_\_\_\_

Duration: 30 minutes

**INSTRUCTIONS TO CANDIDATES**

1. This question paper consists of 5 printed pages, including the cover page.
2. Do not turn this page until you are told to do so.
3. Follow all instructions carefully.
4. Answer all questions.
5. You are allowed to use a calculator.



**Section C:**

For questions 5 to 8, show your mathematical statements clearly in the space provided for each question. Write your answers in the spaces provided. Give your answers to the units stated and to its simplest form whenever necessary. (15 marks)

---

5. The cost of 3 similar shirts and 2 similar pairs of jeans is \$315. A pair of jeans cost thrice as much as a shirt. What is the cost of a shirt and a pair of jeans?

Ans: \_\_\_\_\_ [3]

6. Betty, Rachel and Tony collected used drink cans for recycling. Betty collected 678 more cans than Rachel. Tony collected half the total number of cans Betty and Rachel collected. The total number of used drink cans collected was 1473. How many drink cans did Betty collect?

Ans: \_\_\_\_\_ [3]



7. Amos, Kate and Simon each donated a sum of money to a fund-raising event. Kate and Simon donated a total of \$2310. Amos and Simon donated a total of \$870. Kate donated 5 times as much money as Amos. How much money did Simon donate?

Ans: \_\_\_\_\_ [4]

8. Joel and Ryan had an equal number of trading cards. After Joel gave away 467 trading cards and Ryan gave away 179 trading cards, Ryan had 4 times as many trading cards as Joel. Find the total number of trading cards Joel and Ryan had altogether at first?

Ans: \_\_\_\_\_ [5]

- End of Paper 2 -

SCHOOL : ACS PRIMARY SCHOOL

LEVEL : PRIMARY 5

SUBJECT : MATH

TERM : QUIZ 1

---

1)	2
2)	2
3)	Seven million, ninety thousand and forty-two
4)	True False
5)	$315 \div 9 = 35$ $35 \times 4 = \$140$
6)	$678 \div 2 = 339$ $1473 - 339 = 1134$ $1134 - 678 = 456$ $456 \div 3 = 152$ $152 + 678 = 830$
7)	$2310 - 870 = 1440$ $1440 \div 4 = 360$ $870 - 360 = \$510$
8)	$467 - 179 = 288$ $3u = 288$ $1u = 288 \div 3 = 96$ $467 + 96 = 563$ $563 \times 2 = 1126$

