

# Anglo-Chinese School (Junior)



## BITE-SIZED ASSESSMENT 3 (2022)

PRIMARY 3

SCIENCE

Tuesday

23 August 2022

50 min

Name: \_\_\_\_\_ ( ) Class: 3.( ) Parent's Signature: \_\_\_\_\_

### INSTRUCTIONS TO PUPILS

- 1 Do not turn over the pages until you are told to do so.
- 2 Follow all instructions carefully.
- 3 There are 11 questions in this booklet.
- 4 Answer ALL questions.
- 5 The marks are given in the brackets [ ] at the end of each question or part question.

Question Paper	Possible Marks	Marks Obtained
<b>Total</b>	<b>30</b>	

---

This question paper consists of 13 printed pages (inclusive of cover page).

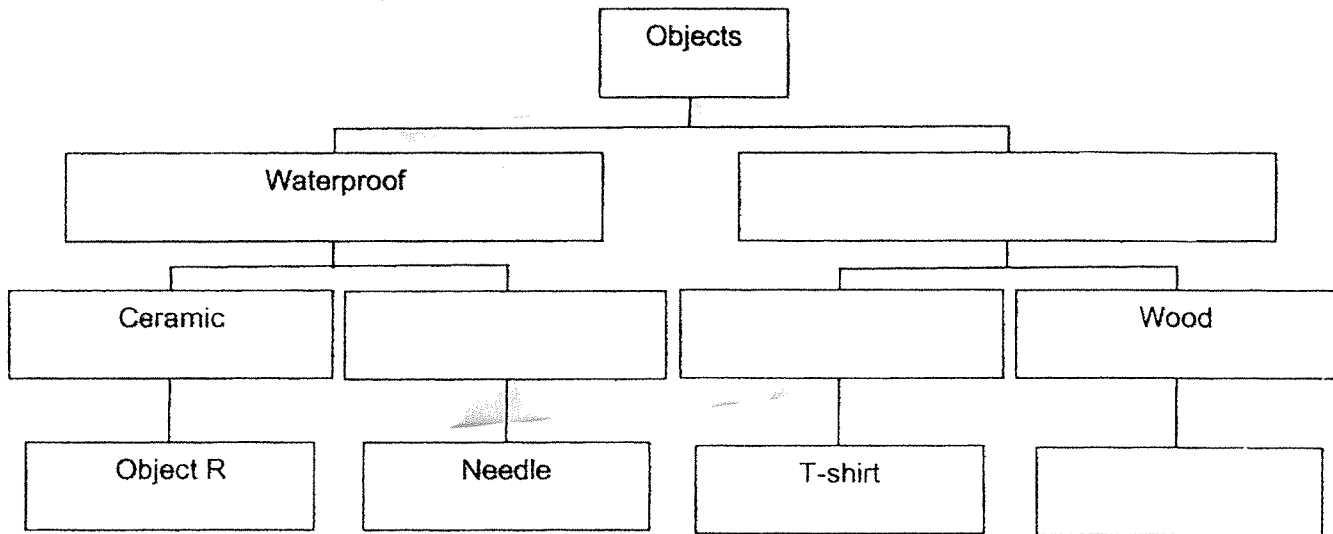


Answer questions 1 to 11. The number of marks available is shown in the brackets [ ] at the end of each question.

1. The diagram shows some objects grouped according to the materials they are made from and their properties.

(a) Complete the diagram by using the words in the table. [2]

Fabric	Clay	Not flexible	Paper
Rubber	Metal	Not waterproof	Scarf



(b) Circle the object which is most likely to be object R. [½]

Vase

Nail

Socks

(c) Which one of the following objects is waterproof? Tick (✓) the correct object. [½]

Silk shirt

Plastic hat

Cotton handkerchief

(Go on to the next page)

SCORE	3
-------	---

2. Unscramble the letters to solve the riddles.

[2]

LOWO

I come from animals and I can be used to make clothes.



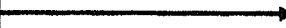
ODGL

Ladies love me because I can be made into beautiful jewellery. I come from the ground.



ESAGS

We move in and out of the tiny openings in leaves.

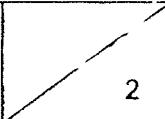


RWTEA

Roots absorb me. Together with mineral salts, I help plants survive and grow well.



(Go on to the next page)

SCORE	
	2

3. The picture shows Meimei in a swimming costume in the water with a swimming board.



Which properties are important in the materials used for making the swimming board and the swimming costume?

Write "Yes" or "No" for the following statements.

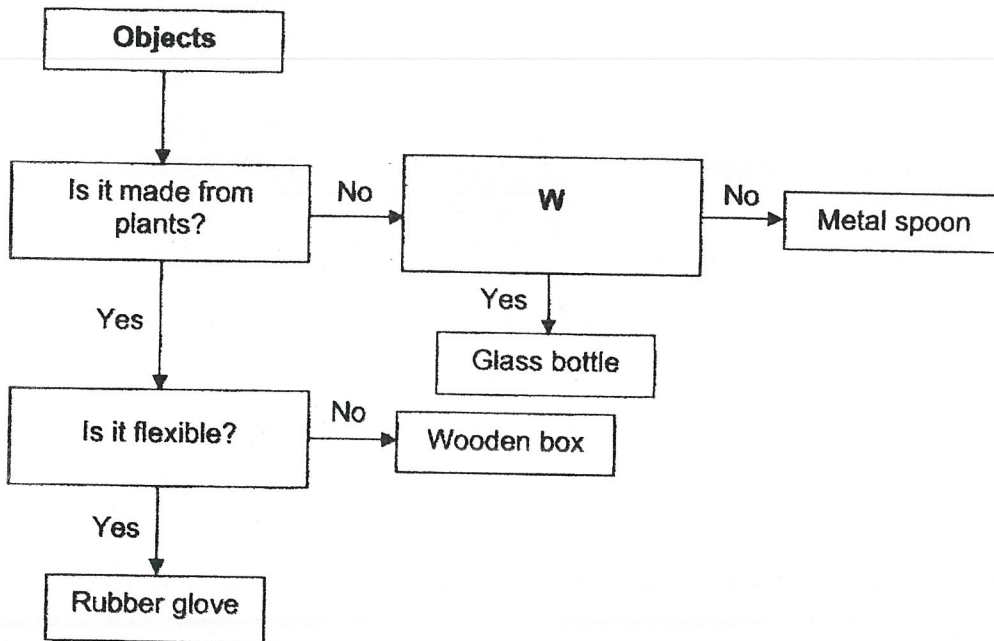
[2]

	Statement	Write "Yes" or "No"
(i)	The material for the swimming costume must be flexible.	
(ii)	The material for the swimming costume must have the ability to float on water.	
(iii)	The material for the swimming board must be transparent.	
(iv)	The material for the swimming board must have the ability to float on water.	

(Go on to the next page)

SCORE	2
-------	---

4. The flowchart shows how four objects are classified.



For parts (a) to (d), answer based on the flowchart.

(a) State the similarity between the metal spoon and the glass bottle.

[1]

\_\_\_\_\_

(b) State the difference between the wooden box and the rubber glove.

[1]

\_\_\_\_\_

\_\_\_\_\_

(c) The letter "W" represents a question that is used to classify the objects. Tick (✓) the question.

[1]

Question	Tick (✓) the question that represents "W"
Is it strong?	
Does it break when dropped?	
Does it come from the ground?	

(d) Name a material that can be used to make all four objects, spoon, bottle, box and glove.

[1]

\_\_\_\_\_

(Go on to the next page)

SCORE	4
-------	---

5. Draw lines to match each test correctly to the property.

[2]

**TEST**

Put weights on it until it breaks.

Place it in a basin of water.

Bend it until it breaks.

Shine a light through it.

**PROPERTY**

ABILITY TO FLOAT  
ON WATER

TRANSPARENCY

STRENGTH

FLEXIBILITY

(Go on to the next page)

SCORE	
	2

6. (a) The pictures show six objects. Tick (✓) the objects which are made of only one material. [1]



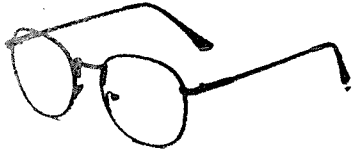
Coin



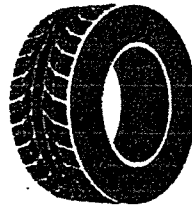
Frosted glass jug



Pencil



Spectacles



Tyre

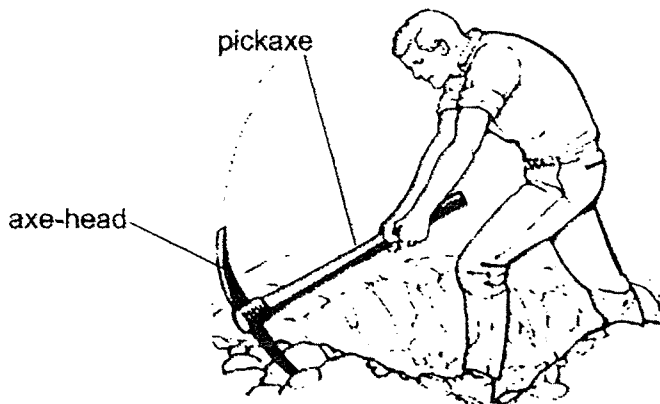


School shoes

- (b) Which object in (a) allows some light to pass through? [1]

\_\_\_\_\_

- (c) A workman uses a pickaxe to break rocks.



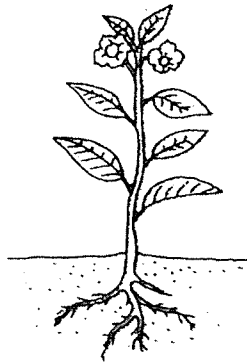
The axe-head is waterproof, sharp and made of very hard material. What is another important property the axe-head must have? [1]

\_\_\_\_\_

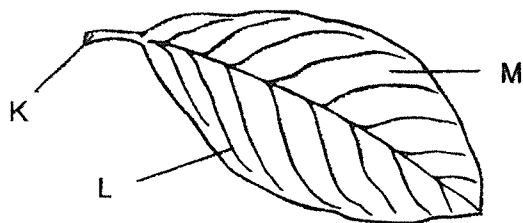
(Go on to the next page)

SCORE	3
-------	---

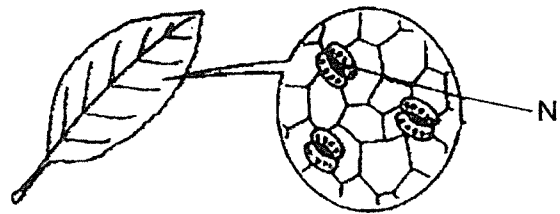
7. Sam saw a plant in his garden.



He plucked out one of the leaves and observed it.



Topside of leaf



Underside of leaf

- (a) Fill in the table with the letters K, L, M and N to match the names to the parts of the leaf. [2]

NAME	PART (Fill in K, L, M and N)
Vein	
Leaf stalk	
Leaf blade	
Tiny openings	

- (b) Sam painted the underside of all the leaves of the plant with black paint and continued to water the plant daily. [1]  
After two weeks, Sam observed that the plant had died. Explain why it died.

---



---

(Go on to the next page)

SCORE	3
-------	---

8. Write the answers to the cloze passage in the crossword puzzle below.

[2]

Cloze Passage

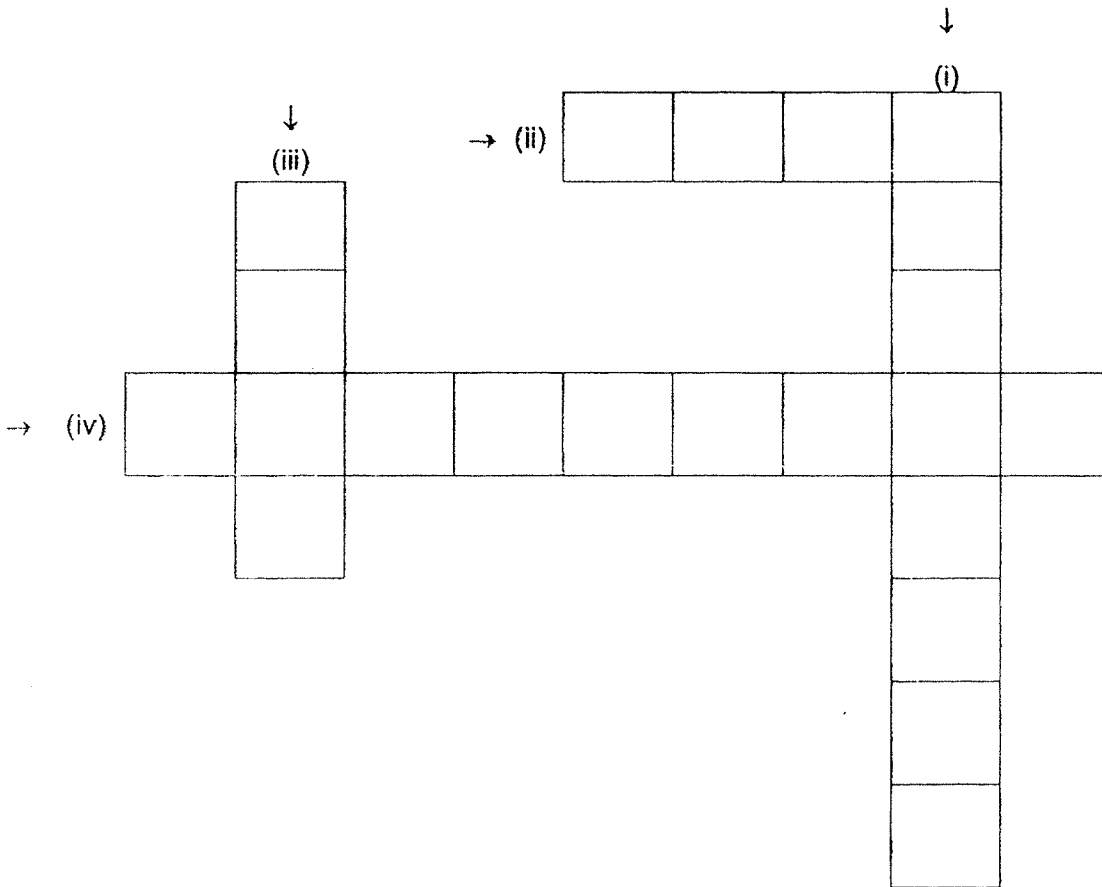
A plant is made up of different parts. Every plant part has a different (i)\_\_\_\_\_.

For example, when there is light, the (ii)\_\_\_\_\_ makes food for the plant. The

part that supports the plant is the (iii)\_\_\_\_\_. Together with the roots and

flowers, all these parts help the plant to make food, grow and (iv)\_\_\_\_\_.

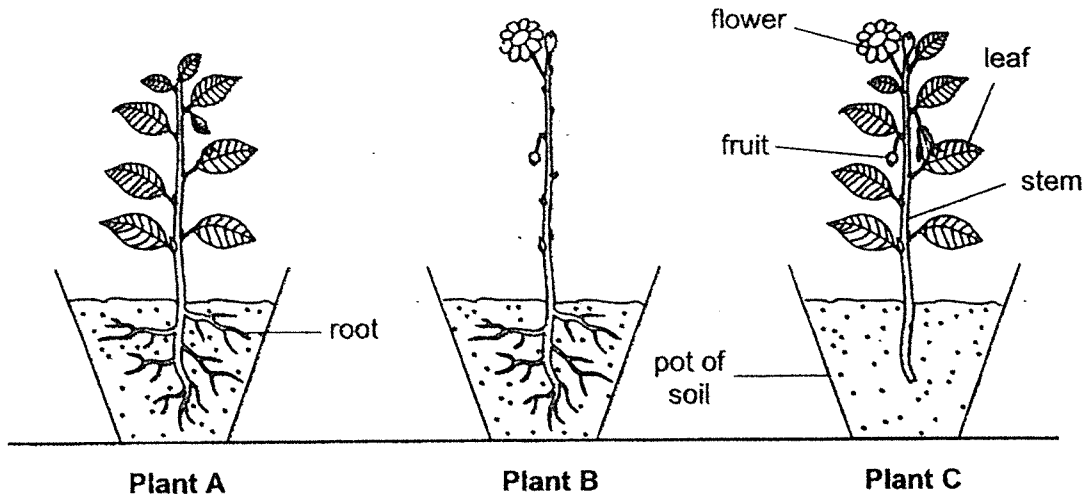
Crossword Puzzle



(Go on to the next page)

SCORE	2
-------	---

9. Siti potted three similar plants, each in a pot of soil. A different part from each plant had been removed. She watered the plants daily and placed them in the Science laboratory.



- (a) After one week, she observed that one of the plants survived but the other two died. Which plant, A, B or C, is the one that survived? [1]

\_\_\_\_\_

- (b) Explain why the plant survived. [1]

\_\_\_\_\_  
 \_\_\_\_\_

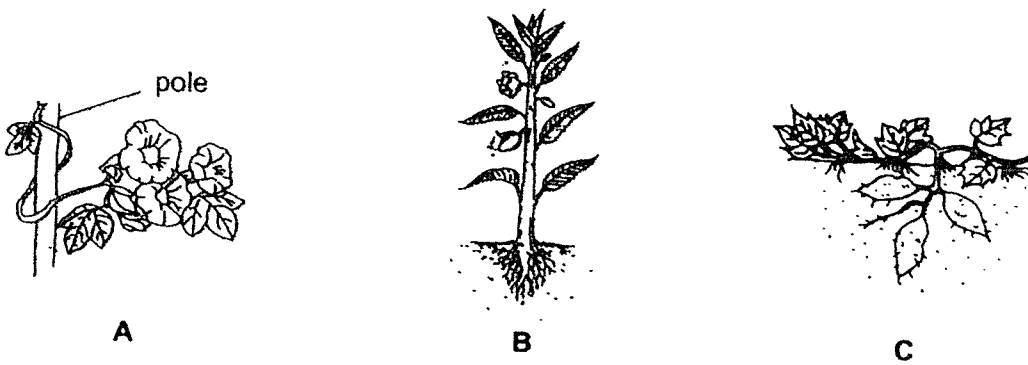
- (c) Siti moved the plant to the eco-garden and it continued to survive. Explain why. [1]

\_\_\_\_\_  
 \_\_\_\_\_

(Go on to the next page)

SCORE	3
-------	---

10. The diagrams show three plants, A, B and C.



(a) Based on your observation of the diagrams, which of the following statement(s) about the plants is/are true? Write the letter "T" for true and "F" for false.

[2]

	Statement	T or F
(i)	Plant C creeps along the ground.	
(ii)	The pole holds plant A firmly in the soil.	
(iii)	The roots of plant C trap sunlight to make food.	
(iv)	Plant B is different from the other two plants because it has leaves.	

(b) Observe plants A and C in the diagrams. How are their stems similar?

[1]

---

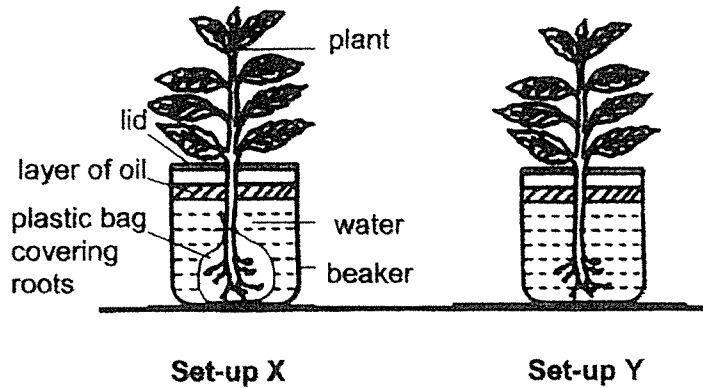


---

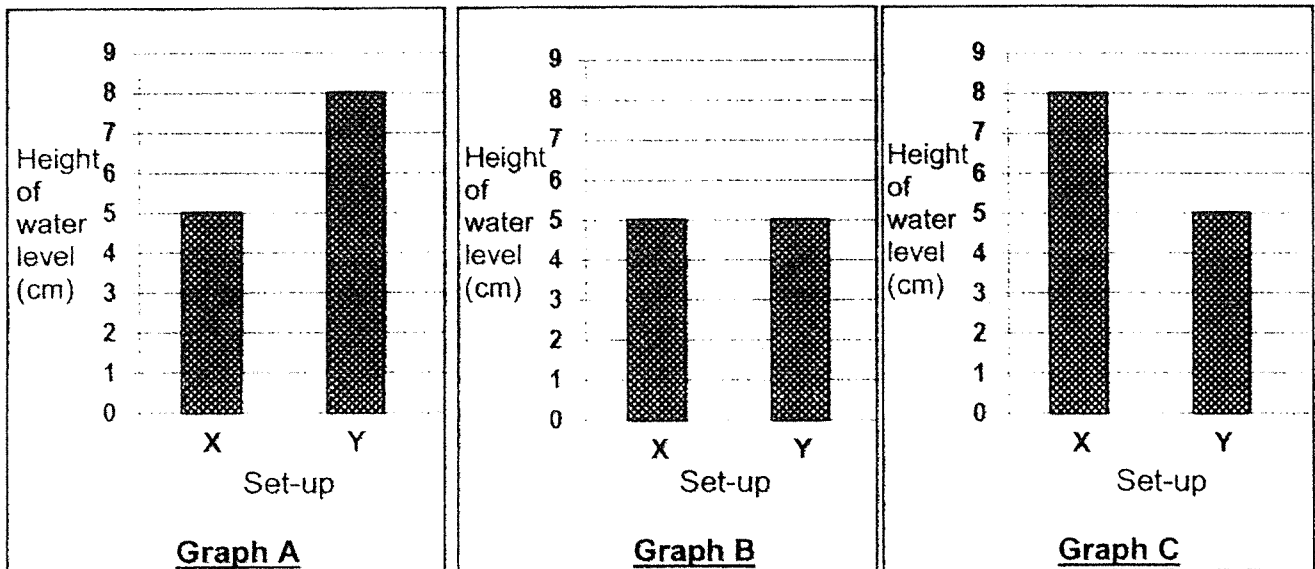
(Go on to the next page)

SCORE	3
-------	---

11. Tammy carried out an experiment with two similar plants. She placed set-ups X and Y in the classroom for three days.



She observed the water level in the beakers at the end of the three days and recorded the results in a graph.



- (a) Which graph, A, B or C, is correct? [1]

\_\_\_\_\_

- (b) State the aim of the experiment. [1]

\_\_\_\_\_  
\_\_\_\_\_

- (c) Tammy wanted to conduct another experiment to find out if the number of leaves will affect the amount of water taken in by the plant. Which two changes must she make to set-up X?

[1]

Change 1: \_\_\_\_\_

\_\_\_\_\_

Change 2: \_\_\_\_\_

\_\_\_\_\_

**END OF PAPER**

SCORE	
	3



## ANSWER KEY

**YEAR : 2022**  
**LEVEL : PRIMARY 3**  
**SCHOOL : ANGLO-CHINESE SCHOOL (JUNIOR)**  
**SUBJECT : SCIENCE**  
**TERM : BYTE-SIZED ASSESSMENT 3**

### BOOKLET A

Q1a)	Waterproof: Metal Not waterproof, fabric, paper	
Q1b)	Vase	
Q1c)	Plastic hat	
Q2)	Wool, Gold Gases, Water	
Q3)	i) Yes ii) No iii) No iv) Yes	
Q4a)	They are not made from plants	
Q4b)	The rubber glove is flexible while the wooden box is not flexible.	
Q4c)	Question	Tick (✓) the question that represents "W"
	Is it strong?	
	Does it break when drop?	✓
	Does it come from the ground?	
Q4d)	Plastic	
Q9a)	Plant A	
Q9b)	It still had both its roots and leaves so it can continue to make food and absorb water.	
Q9c)	The roots and leaves were still intact and the soil had both water and mineral salts. It also got enough sunlight to make food.	
Q10a)	i) T ii) F iii) F iv) F	
Q10b)	Their stems are weak thus they need to either creep along the ground or climb onto something to support itself.	
Q11a)	Graph C	
Q11b)	The aim of the experiment is to find out whether the roots absorb water.	

Q11c)	Change 1: She must remove the plastic bag from the roots. Change 2: She must pluck out all the leaves on set-up X.
-------	---

Q5. put weights on it until it breaks — strength  
Place it in a basin of water — ability to float on water  
Bend it until it breaks — Flexibility  
Shine a light through it — transparency.

Q 6 (a) coin , Frosted glass jug , tyre .  
(b) the frosted glass jug .  
(c) It must be strong .

Q7(a) L  
K  
M  
N

Q7(b) The plant could not release or take in gases as the tiny openings were covered thus it cannot make food.

Q8. (i) Function  
(ii) leaf  
(iii) stem  
(iv) reproduce