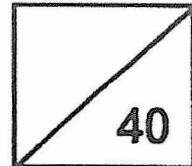


Rosyth School
Weighted Assessment One for 2021
SCIENCE
Primary 3

Name: _____

Total
Marks:



Class: Pr 3 _____

Register No. _____

Duration: 50 min

Date: 7 May 2021

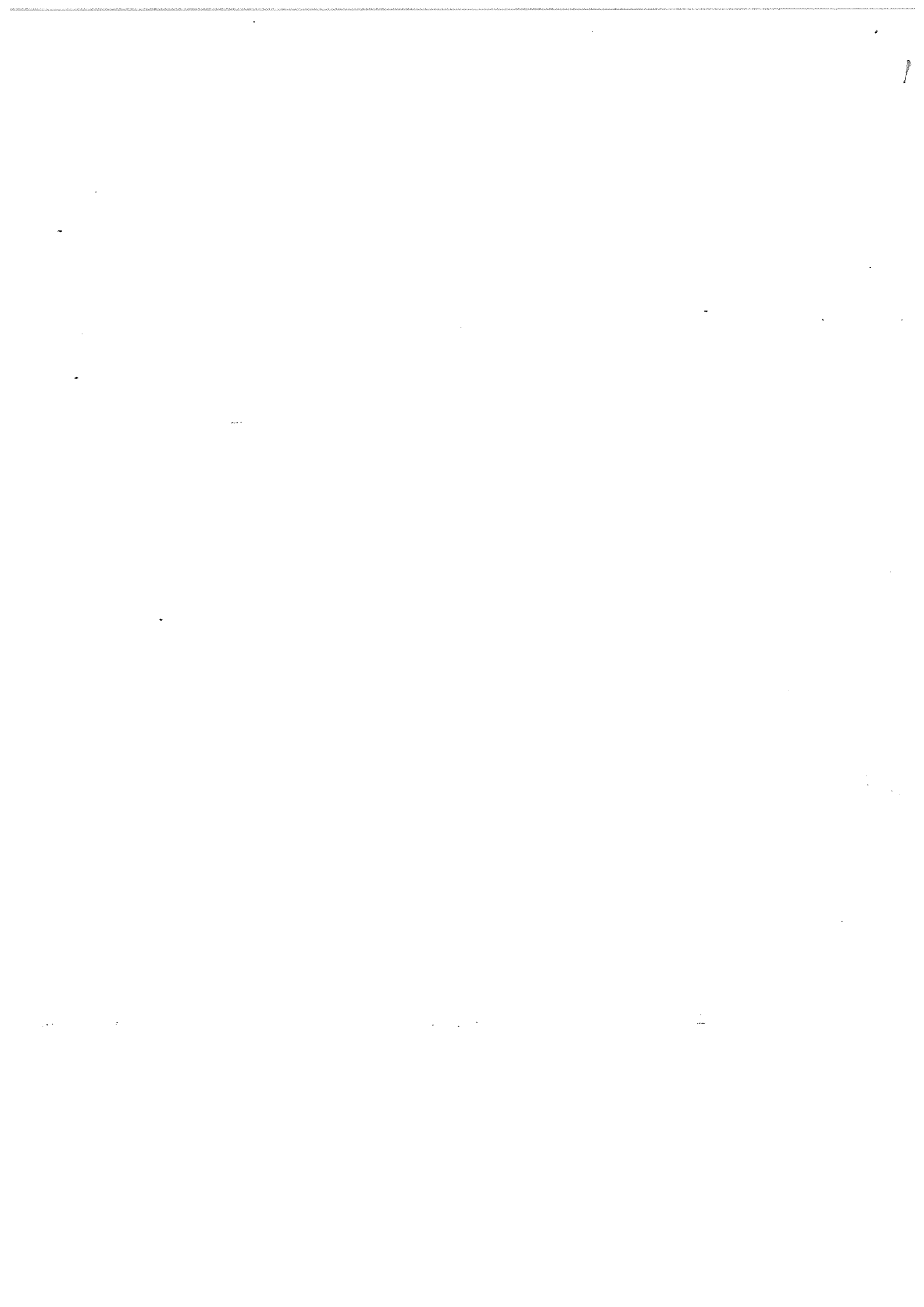
Parent's Signature: _____

Instructions to Pupils:

1. Do not open the booklet until you are told to do so.
2. Follow all instructions carefully.
3. For questions 1 to 11, write the correct answer in the brackets provided.
4. For questions 12 to 16, give your answers in the spaces provided.

| | Maximum Marks | Marks Obtained |
|----------------|----------------------|-----------------------|
| Q1-Q11 | 22 marks | |
| Q12-Q16 | 18 marks | |
| Total | 40 marks | |

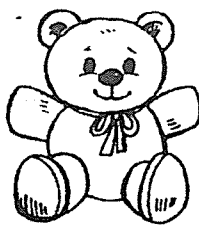
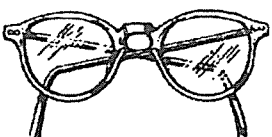
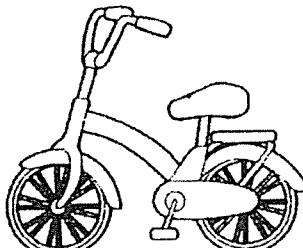

* This booklet consists of 12 printed pages (including cover page).



For each question from 1 to 11, four options are given. One of them is the correct answer. Make your choice (1, 2, 3 or 4). Write the correct answer in the bracket provided.

(22 marks)

1. Which one of the following things most likely needs air, food and water to stay alive?

| | |
|--|--|
| <p>(1) A teddy bear on a bed</p>  | <p>(2) A pair of glasses on my face</p>  |
| <p>(3) A bicycle in a room</p>  | <p>(4) A potted plant in a garden</p>  |

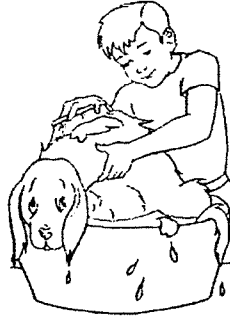
()

2. Which one of the following statements is true about bacteria?

- (1) They reproduce by spores.
- (2) They are non-living things.
- (3) They can be classified as micro-organisms.
- (4) They cannot survive outside a human body.

()

3. Sam noticed that his pet dog shivered while he was bathing it.



What did Sam's observation tell you about living things?




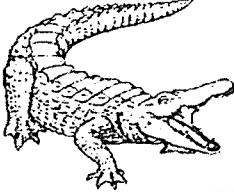
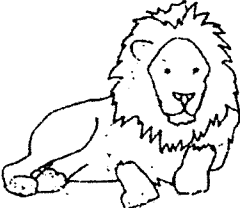
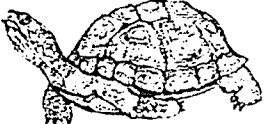
- (1) Living things can grow.
 - (2) Living things can reproduce.
 - (3) Living things need air, food and water to survive.
 - (4) Living things can respond to changes around them. ()
4. The table below shows the observations made by Siti on three things, W, X and Y, found at home. She stated their characteristics as shown in the table below.

| Characteristics | W | X | Y |
|----------------------------------|-----|-----|-----|
| Can it grow? | No | Yes | Yes |
| Can it reproduce? | No | Yes | Yes |
| Can it make its own food? | No | No | Yes |
| Can it move from place to place? | Yes | Yes | No |

Based on the table, which one of the following statements is definitely true?

- (1) X is a plant.
- (2) Y is a fungi.
- (3) W is a living thing.
- (4) X needs food to survive. ()

5. Study the classification table carefully. The animals below are grouped into two groups, C and D.

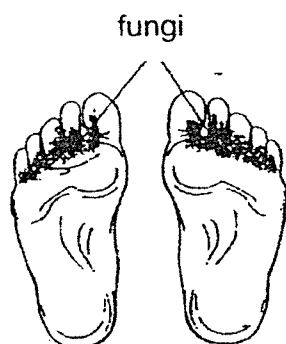
| Group C | Group D |
|--|---|
|  |  |
|  |  |
|  |  |

The above animals are grouped according to _____.

- (1) what they eat
- (2) the way they move
- (3) their body coverings
- (4) the number of legs they have

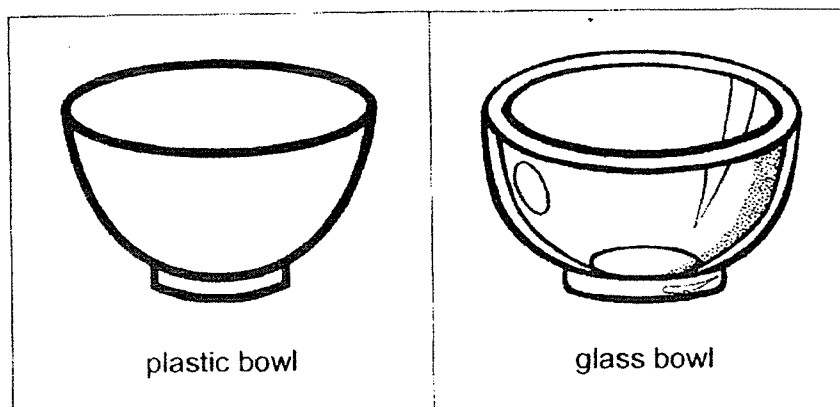
()

6. Kok Ming observed some fungi growing on his feet.



What is a good advice to reduce the growth of the fungi on his feet?

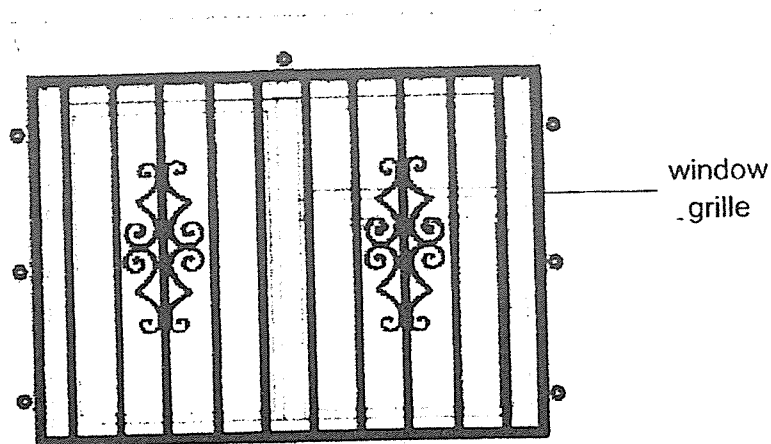
- (1) Do not wear socks.
 - (2) Wear a closed shoe.
 - (3) Wear an open slipper.
 - (4) Do not remove the dead skin on his feet. ()
7. The bowls used in a school canteen are usually made of plastic instead of glass.



Which one of the following properties of plastic makes it a more suitable material to use than glass?

- (1) It is strong.
- (2) It floats on water.
- (3) It does not break easily.
- (4) It does not allow light to pass through. ()

8. Sandy wants to install a window grille as shown below .



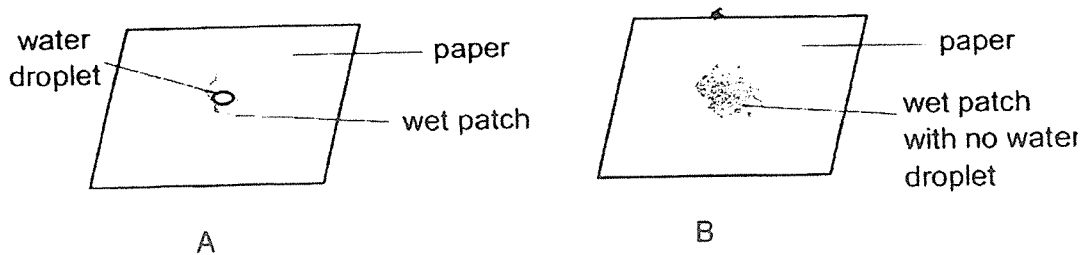
A window grille must be _____.

- A: strong
- B: flexible
- C: waterproof
- D: transparent

- (1) A and B only
- (2) A and C only
- (3) B and C only
- (4) B and D only

()

9. A similar size water droplet is dropped onto papers, A and B. The observation is as shown below after five minutes.



Which one of the following statements is correct?

- (1) Paper A is more absorbent than paper B. ^x
- (2) Paper A is waterproof but paper B is not. ^x
- (3) Paper B is more absorbent than paper A. [✓]
- (4) Paper B is less waterproof than paper A. ^x

()

10. The table below shows the maximum weight four different types of plastic bags, A, B, C and D, can hold before breaking.

| Type of plastic bag | Maximum weight the plastic bag can hold before it broke (kg) |
|---------------------|--|
| A | 3 |
| B | 5 |
| C | 6 |
| D | 1 |

If we want to carry objects which weigh 4kg, which plastic bag(s) can be used?

- (1) A only
 (2) A and D only
 (3) B and C only
 (4) A, B and D only ()
11. Annie wants to buy a material to make a towel. The properties of materials, P, Q, R and S are shown below. A tick (✓) indicates that the material has the property.

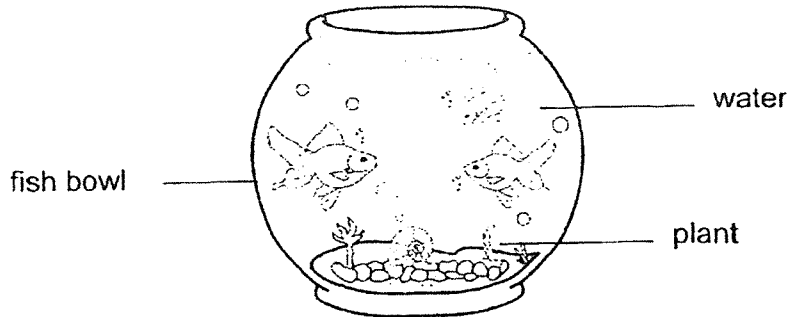
| Material | Waterproof | Flexible | Allows light to pass through |
|----------|------------|----------|------------------------------|
| P | ✓ | | |
| Q | | ✓ | |
| R | ✓ | ✓ | |
| S | | ✓ | ✓ |

Which is the most suitable material she should choose to make a towel?

- (1) P
 (2) Q
 (3) R
 (4) S ()

For questions 12 to 16, write your answers in the blanks provided. (18 marks)

12. Sarah bought four fishes and put them in a fish bowl as shown below.



(a) Tick (✓) all the conditions needed for the fishes to survive. [1]

| | |
|-------|--|
| Air | |
| Food | |
| Water | |

(b) One day, Sarah noticed that the fishes kept swimming near the surface of the water.

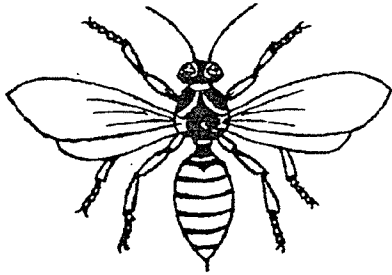
Explain why the fishes were swimming near the surface of the water. [1]

(c) What could Sarah do to prevent the fishes from swimming near the surface of the water? [1]

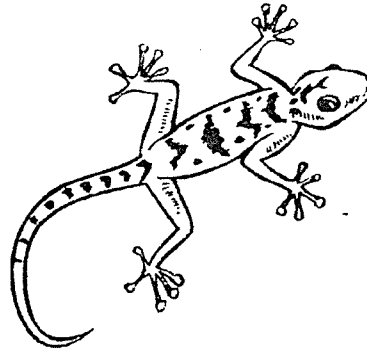
(d) After some weeks, small baby fishes were observed in the fish bowl.

This shows that living things can _____ [1]

13. Study the pictures of the two animals, X and Y, below.



Animal X



Animal Y

(a) Which animal group does Animal X belong to? [1]

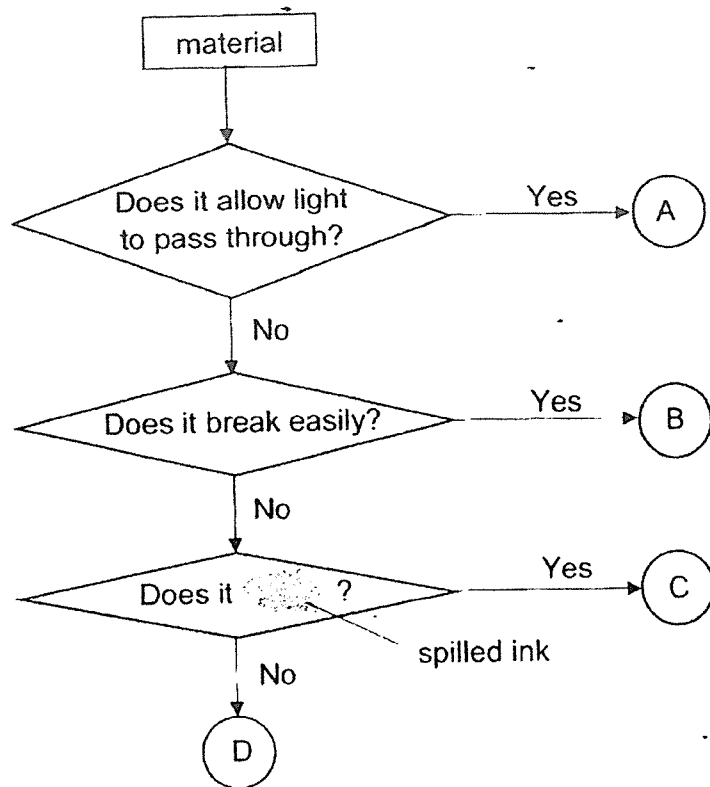
(b) State two reasons why Animal Y cannot be placed in the same group as Animal X. [2]

Reason 1

Reason 2

(c) In terms of reproduction, state a similarity between Animal X and Y. [1]

14. The flow chart below shows the characteristics of materials, A, B, C and D.



(a) Which of the following materials below are represented by letters A, B, C or D? Write the letter in the box provided. [1]

Ceramic

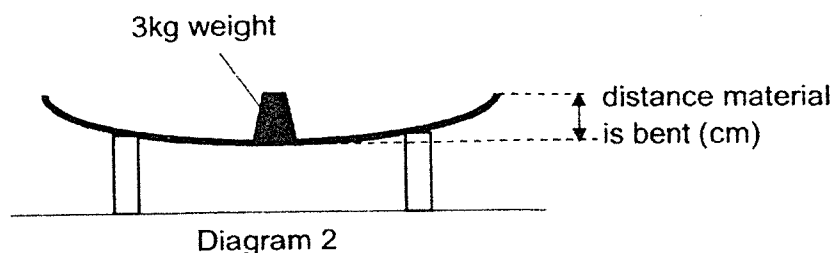
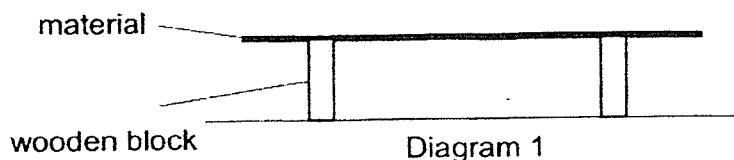
Clear Glass

(b) State a similarity between material B and C. [1]

(c) If C is a metal ruler and D is a rubber duck, what is the word in the question covered by the spilled ink on the flow chart? [1]

Does it _____?

15. Andrew set up an experiment as shown below to compare the flexibility of three different materials, X, Y and Z, which are of the same length and thickness.



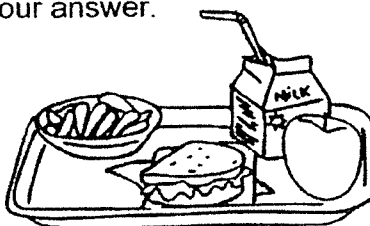
A 3kg weight was placed in the middle of material X. Andrew measured the distance the material was bent. He repeated the experiment using materials, Y and Z. He recorded his results in the table below.

| Material | Distance (cm) |
|----------|---------------|
| X | 2 |
| Y | 5 |
| Z | 0 |

- (a) Arrange the materials, X, Y and Z, according to their flexibility. Start with the least flexible material. [1]

_____ (least flexible) , _____ , _____ (most flexible)

- (b) Based on the experiment above, which material, X, Y or Z, is most suitable for making a food tray? Explain your answer. [2]

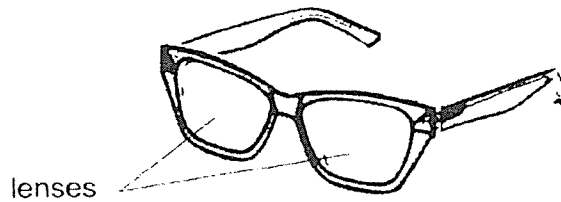


16. Muthu conducted some tests on materials, S, T and W. The results of the tests are shown in the table below. A tick (✓) indicates that the material has the property.

| Property | Materials | | |
|------------------------------|-----------|---|---|
| | S | T | W |
| Flexible | | ✓ | |
| Waterproof | ✓ | ✓ | ✓ |
| Floats on water | ✓ | ✓ | |
| Allows light to pass through | | | ✓ |

- (a) Based on the results table above, state the four properties of T. [2]

- (b) The diagram below shows the lenses of a pair of glasses.



Based on the results table above, explain why material S is **not suitable** to be used as the lenses of a pair of glasses? [2]

End of Paper



ANSWER KEY

YEAR : 2021
LEVEL : Primary 3
SCHOOL : Rosyth School
SUBJECT : SCIENCE
TERM : Weighted Assessment 1

BOOKLET A

| | | | | | | | | | |
|-----|---|----|---|----|---|----|---|-----|---|
| Q1 | 4 | Q2 | 3 | Q3 | 4 | Q4 | 4 | Q5 | 3 |
| Q6 | 3 | Q7 | 3 | Q8 | 2 | Q9 | 3 | Q10 | 3 |
| Q11 | 2 | | | | | | | | |

BOOKLET B

| | |
|-----|--|
| Q12 | (a) Tick Air, Food and Water (b) The fishes were swimming near the surface of the water because there was not enough air to breathe. (c) Sarah could buy an air pump that pumps air into the bowl so that the fish can breathe. (d) reproduce |
| Q13 | (a) Animal X belongs to the group of insects. (b) Reason 1 : Animal X has six legs but Animal Y has four legs. Reason 2 : Animal X has three body parts but Animal Y has one body part. (c) Both Animal X and Y lay eggs. |
| Q14 | (a) Ceramic : B Clear Glass : A (b) Both material B and C do not allow light to pass through. (c) Does it sink in water? |
| Q15 | (a) Z, X, Y (b) Z, it is the least flexible and a food tray needs to be not flexible so that the food would not spill when it is being carried with the tray. |
| Q16 | (a) Material T is flexible, waterproof, able to float on water and does not allow light to pass through. (b) Material S is not suitable because it does not allow light to pass through and lenses needs to be transparent so you can see through them. |