

**PEI CHUN PUBLIC SCHOOL**

**PRIMARY 3**

**TERM 1 WEIGHTED ASSESSMENT 2021**

**SCIENCE**

**Time: 30 min**

Name: \_\_\_\_\_ ( )

Class: Primary 3 / ( ) \_\_\_\_\_

Date: 22 February 2021

Science Teacher: \_\_\_\_\_

Parent's Signature: \_\_\_\_\_

|                  |           |
|------------------|-----------|
| <b>SECTION A</b> | <b>10</b> |
| <b>SECTION B</b> | <b>10</b> |
| <b>TOTAL</b>     | <b>20</b> |

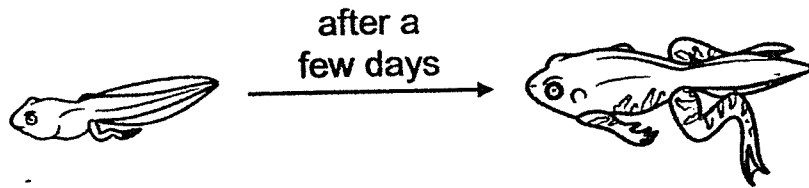
**INSTRUCTIONS TO CANDIDATES**

1. Do not turn over this page until you are told to do so.
2. Follow all instructions carefully.
3. Answer all questions.
4. Write your answers in this booklet.

**Section A (5 × 2 marks)**

For questions 1 to 5, choose the most suitable answer and write its number (1, 2, 3 or 4) in the brackets provided.

- 1 Raja found an animal in a pond. He observed how the animal changed over a few days.

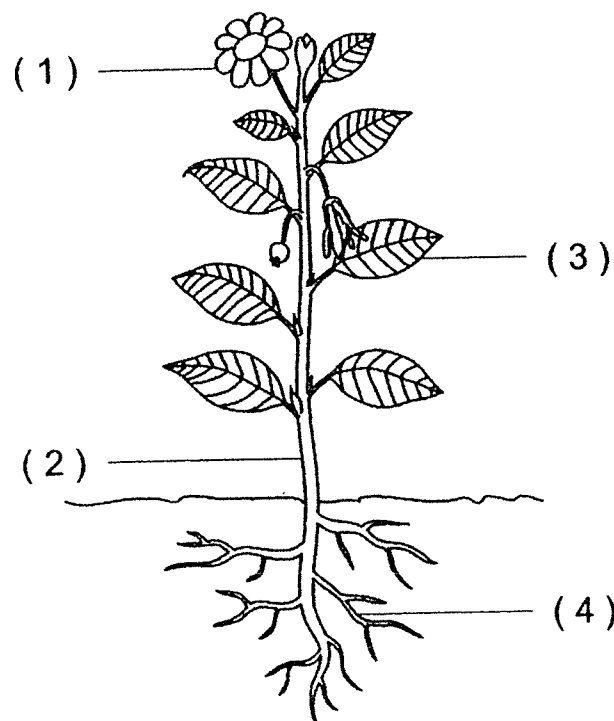


From his observation, Raja can conclude that the animal is a living thing because it can \_\_\_\_\_.

- (1) grow
- (2) move
- (3) respond
- (4) reproduce

( )

- 2 The diagram below shows a plant. Which part, (1), (2), (3) or (4), is the roots?

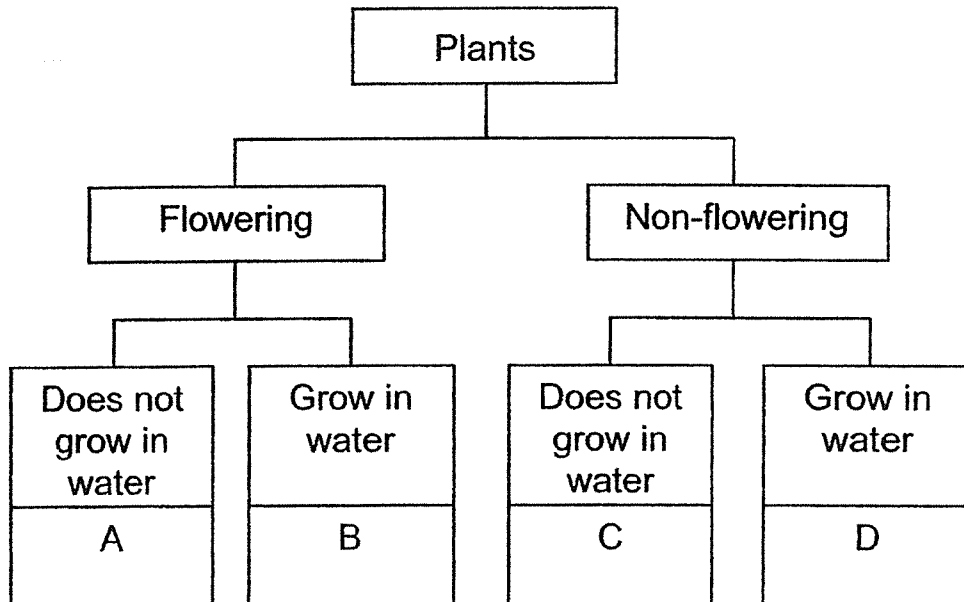


( )

- 3 The table below gives some information on plant X, based on two characteristics. A tick (✓) shows that the plant has the characteristic.

| Characteristics  | Plant X |
|------------------|---------|
| Produces flowers | ✓       |
| Grows on land    |         |

From the information given, where does plant X belong in the following classification diagram?



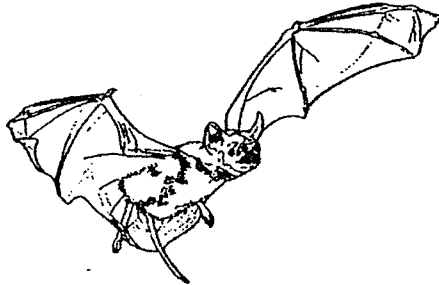
- (1) A
- (2) B
- (3) C
- (4) D

( )

4 The table below shows how some animals can be grouped.

|                     | Has hair | Does not have hair |
|---------------------|----------|--------------------|
| Has wings           | K        | L                  |
| Does not have wings | M        | N                  |

The diagram below shows a mammal.

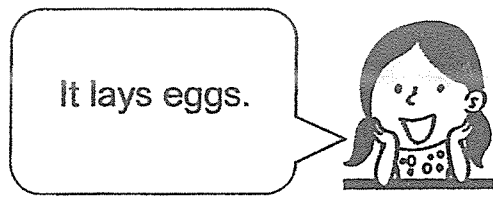


In which group of animals does this mammal belong?

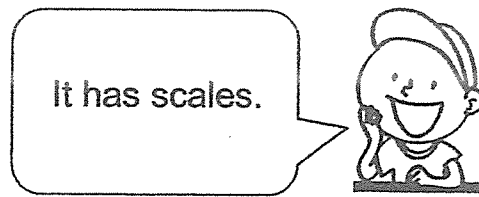
- (1) K
- (2) L
- (3) M
- (4) N

( )

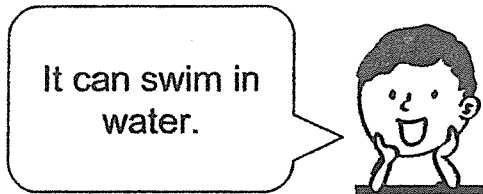
5 Four students made the following observations about an animal.



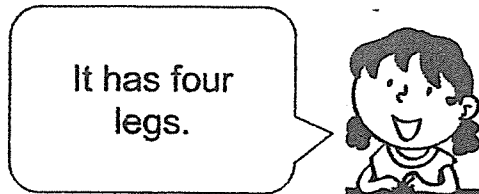
Anna



Bala



Carl



Dawn

Based on their observations, this animal can be classified as a/an

\_\_\_\_\_.

- (1) fish
- (2) insect
- (3) reptile
- (4) amphibian

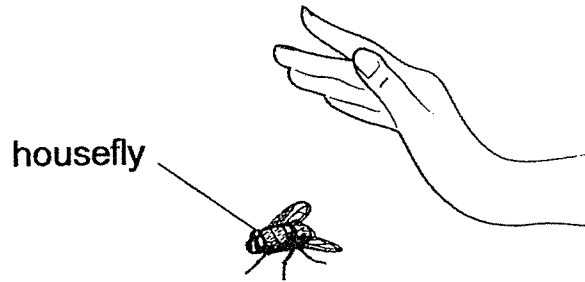
( )

**End of Section A**

**Section B (10 marks)**

For questions 6 to 9, write your answers in the spaces provided.

6 Aini saw a housefly resting on the table.

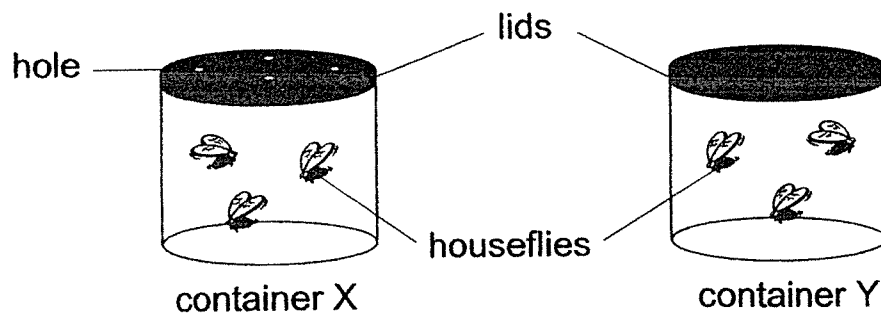


(a) Aini moved her hand near the housefly and the housefly flew away. What characteristic of living things did the housefly show? [1]

---

---

(b) Aini kept the same number of houseflies in two glass containers as shown below.



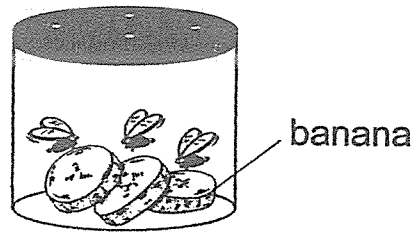
Explain why the houseflies in container X could stay alive longer than those in container Y. [1]

---

---

|       |  |
|-------|--|
| SCORE |  |
|-------|--|

(c) Aini added some pieces of banana into container X.







Explain how this would help the houseflies to stay alive. [1]

---

---

|       |  |
|-------|--|
| SCORE |  |
|-------|--|

7 Joanne grouped some living things as shown in the table below.

| Living Things   |  |
|---|--|
| K   | L  |
| <br>rabbit's foot fern | <br>dandelion |
| <br>water moss fern   | <br>hibiscus |

Choose the correct phrases from the box below to give suitable headings for K and L. [2]

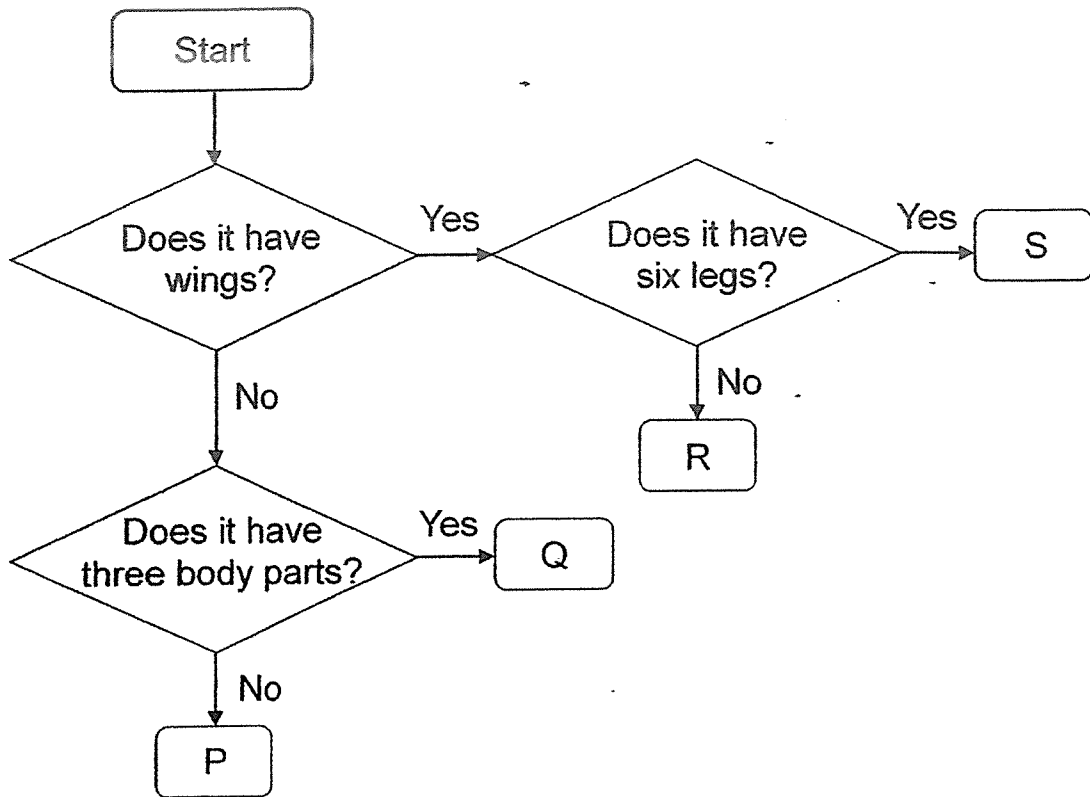
|                       |                          |
|-----------------------|--------------------------|
| Grow on land          | Grow in water            |
| Can produce fruits    | Can make its own food    |
| Cannot produce fruits | Cannot make its own food |

K: \_\_\_\_\_

L: \_\_\_\_\_

|       |  |
|-------|--|
| SCORE |  |
|-------|--|

- 8 Study the chart below. Letters P, Q, R and S represent four different animals.



Use the information in the chart to answer the following questions.

- (a) State a similarity between animals P and Q. [1]

---

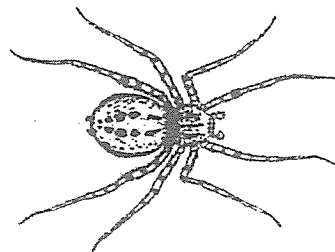


---

- (b) Which of these animals, P, Q, R or S, is/are insects? [1]

---

- (c) The diagram below shows an animal.

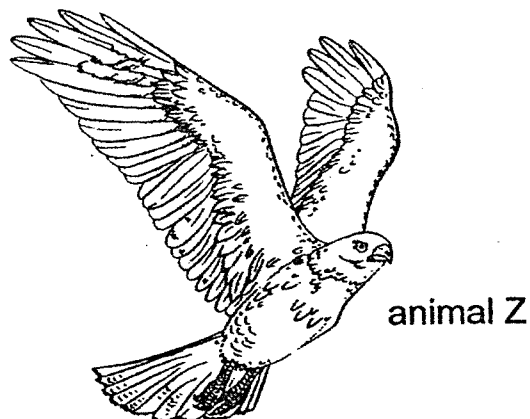


Match the animal to the correct letter (P, Q, R or S) in the chart. [1]

It is animal \_\_\_\_\_.

|       |  |
|-------|--|
| SCORE |  |
|-------|--|

9 Jim observed animal Z and concluded that it is a bird.



(a) Tick (✓) **one** of the following characteristics of animal Z that allowed Jim to conclude that it is a bird. [1]

It can fly.

It has wings.

It has feathers.

(b) State how animal Z reproduces. [1]

---

---

**End of Section B**

Set by : Mrs Erine Chong  
Vetted by : Mdm Samantha Gooi and Ms Tan Hwee San

|       |  |
|-------|--|
| SCORE |  |
|-------|--|



## ANSWER KEY

**YEAR : 2021**  
**LEVEL : Primary 3**  
**SCHOOL : Pei Chun Public School**  
**SUBJECT : SCIENCE**  
**TERM : Term 1 Weighted Assessment**

### Section A

|    |   |    |   |    |   |    |   |    |   |
|----|---|----|---|----|---|----|---|----|---|
| Q1 | 1 | Q2 | 4 | Q3 | 2 | Q4 | 1 | Q5 | 3 |
|----|---|----|---|----|---|----|---|----|---|

### Section B

|    |   |
|----|---|
| Q6 | (a) The housefly respond to changes around it.<br>(b) The house flies in container X had enough air to stay alive but the house flis in container Y did not.<br>(c) The house flies had food to stay alive. |
| Q7 | K : Cannot produce fruits<br>L : Can produce food   |
| Q8 | (a) Both P and Q does not have wings.<br>(b) Q and S are insects.<br>(c) It is animal P.  |
| Q9 | (a) Tick, It has feathers.<br>(b) Animal Z lay eggs.  |