



Anglo-Chinese School
(Primary)

A Methodist Institution
(Founded 1886)

**MILESTONE CHECK 2021 (PRACTICE)
SCIENCE
PRIMARY THREE
BOOKLET A**

Name: _____ ()

Class: Primary 3 _____

Date: _____

Duration of paper: 25 min

Parent's/Guardian's signature

INSTRUCTION TO CANDIDATES

1. This question paper consists of **4** printed pages including this cover page.
2. Do not turn this page until you are told to do so.
3. Follow all instructions carefully.
4. Answer all questions.
5. Shade your answer on the Optical Answer Sheet (OAS) provided.

For each of the following questions from 1 to 11, four options are given. One of them is the correct answer. Make your choice (1, 2, 3 or 4). Shade the correct oval (1, 2, 3 or 4) on the Optical Answer Sheet. [12 marks]





- 1 The table shows the height of a plant grown over three weeks.

| Week | Height of a plant grown (cm) |
|------|------------------------------|
| 0 | 5 |
| 1 | 9 |
| 2 | 12 |
| 3 | 15 |

Based on the table above, which of the following characteristics best describes the plant as a living thing?

- (1) It can grow.
 - (2) It can reproduce.
 - (3) It can move by itself.
 - (4) It can respond to changes around it.
- 2 Which characteristic(s) is/are common to flowering plants?
- A Flowering plants do not make their own food.
 - B Flowering plants usually reproduce from seeds.
 - C Flowering plants have spores underneath their leaves.
- (1) A only
 - (2) B only
 - (3) B and C only
 - (4) A, B and C

- 3 Alice wanted to find out if the amount of water given to four identical plants would affect their growth. She used the same amount of soil and the same type of pot and soil for all four set-ups as shown.

| Set-up A | Set-up B | Set-up C | Set-up D |
|---|---|---|---|
| 150 ml of water In the shade | 50 ml of water In the shade | 150 ml of water In the sun | 50 ml of water In the sun |
|  |  |  |  |

Which two set-ups should Alice use to ensure a fair test?

- (1) A and C
 - (2) B and C
 - (3) B and D
 - (4) C and D
- 4 Which of the following is/are common characteristics of all fish?
- A They have scales.
 - B They give birth to young alive.
 - C They breathe through their gills.
- (1) A and B only.
 - (2) A and C only
 - (3) B and C only
 - (4) A, B and C

- 5 David carried out an experiment with four similar slices of fresh bread, P, Q, R and S. He sprinkled different amounts of water on each slice of bread and placed them on the dining table. The observations were recorded in the table below.

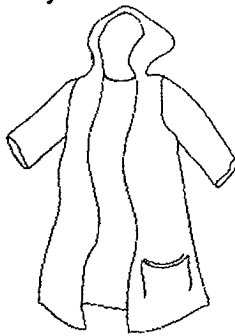
| Bread slice | Amount of water sprinkled (ml) | Number of days needed for the bread mould to form on the bread |
|-------------|--------------------------------|--|
| P | 0 | 14 |
| Q | 5 | 10 |
| R | 10 | ? |
| S | 20 | 4 |

Based on the table above, predict how many days would be needed for bread mould to form on Bread R?

- (1) 2
 (2) 6
 (3) 12
 (4) 16
- 6 Study the two objects found in a home carefully.



plastic bag



raincoat

Materials used to make the above objects should be _____.

- A flexible
 B waterproof
 C able to sink in water
- (1) C only
 (2) A and B only
 (3) B and C only
 (4) A, B and C



Anglo-Chinese School
(Primary)

A Methodist Institution
(Founded 1886)

MILESTONE CHECK 2021 (PRACTICE)
SCIENCE
PRIMARY THREE
BOOKLET B

Name: _____ ()

Class: Primary 3 ____

Date: _____

Duration of paper: 25 min

Parent's/Guardian's signature

INSTRUCTION TO CANDIDATES

1. This question paper consists of **4** printed pages, including this cover page.
2. Do not turn this page until you are told to do so.
3. Follow all instructions carefully.
4. Answer all questions.
5. Write all your answers in this booklet.

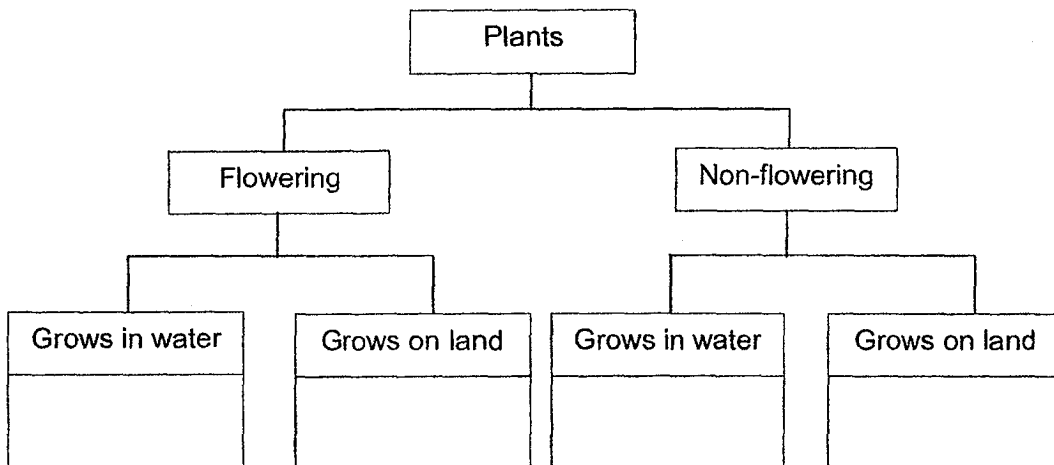
| Booklet | Maximum marks | Marks obtained |
|---------|---------------|----------------|
| A | 12 | |
| B | 10 | |
| Total | 22 | |

For questions 12 to 14, write your answers in the spaces provided in this booklet. The number of marks available is shown in brackets [] at the end of each question or part question. [10 marks]

- 12 The table provides information on four plants, A, B, C and D, based on two characteristics. A tick (✓) shows that the plant has the characteristic.

| Characteristics | Plant | | | |
|------------------------|-------|---|---|---|
| | A | B | C | D |
| Reproduces from spores | ✓ | | | ✓ |
| Grows in water | | | ✓ | ✓ |

The four plants are classified in the chart below. Write the letters, A, B, C and D in the correct box. [4]



(Go on to the next page)

| | |
|-------|---|
| Score | 4 |
|-------|---|

13 Study the table carefully.

| Characteristics | Animal | | | |
|----------------------------|--------|-----|-----|-----|
| | Q | R | S | T |
| Can it fly? | Yes | Yes | | |
| Does it have hair? | | | Yes | Yes |
| Does it lay eggs? | Yes | Yes | Yes | |
| Does it have 3 body parts? | | Yes | | |

(a) Based on the table, describe **all** the characteristics of Animal R. [1]

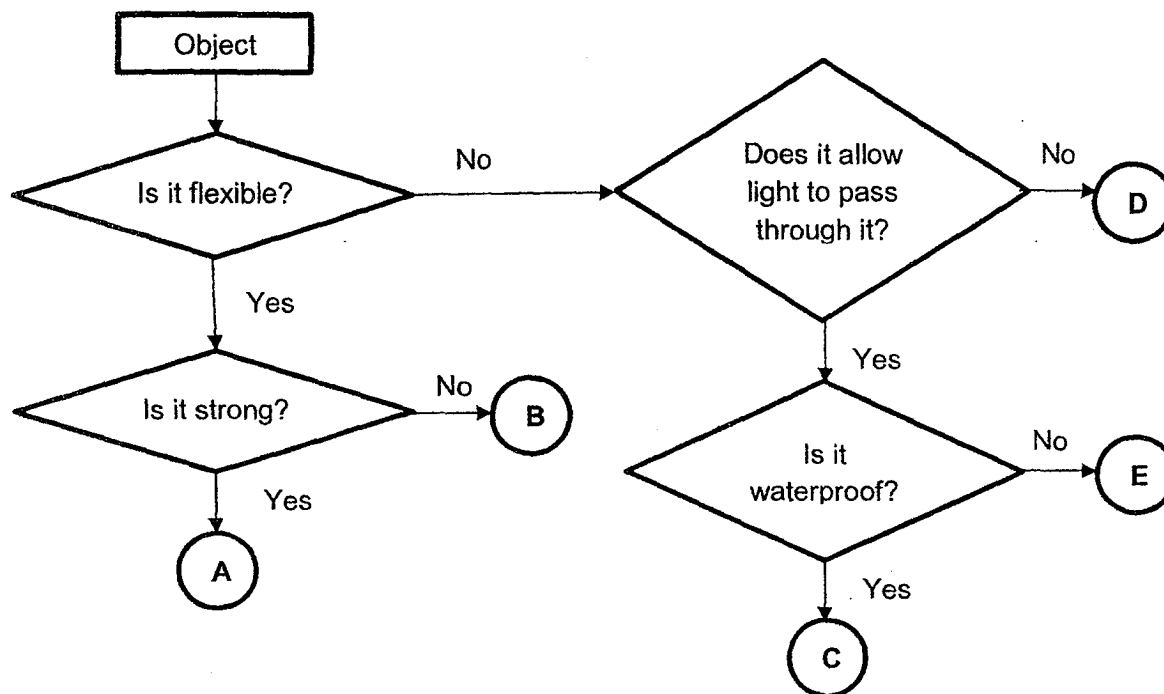
(b) Based on the table, state **one difference** between Animal S and Animal T. [1]

(c) Which animal, Q, R, S or T, is most likely a bird? [1]

(Go on to the next page)

| | |
|-------|---|
| Score | 3 |
|-------|---|

14 Study the flowchart given below.



(a) Using the flowchart above, state **two similarities** between objects C and E. [2]

(b) In the flowchart above, which letter, A, B, C or D, best represents the following objects? [1]

(i) Leather belt: _____

(ii) Metal chopsticks: _____

ANSWER KEY

YEAR : 2021
LEVEL : Primary 3
SCHOOL : Anglo-Chinese School (Primary)
SUBJECT : SCIENCE
TERM : Milestone Check (Practice)

BOOKLET A

| | | | | | | | | | |
|----|---|----|---|----|---|----|---|----|---|
| Q1 | 1 | Q2 | 2 | Q3 | 4 | Q4 | 2 | Q5 | 2 |
| Q6 | 2 | | | | | | | | |

BOOKLET B

| | |
|-----|---|
| Q12 | <pre> graph TD Plants --> Flowering Plants --> Non-flowering Flowering --> C[Grows in water] Flowering --> B[Grows on land] Non-flowering --> D[Grows in water] Non-flowering --> A[Grows on land] </pre> |
| Q13 | <p>(a) Animal R can fly, lay eggs and has 3 body parts.</p> <p>(b) Animal S reproduces by laying eggs while animal T does not.</p> <p>(c) Animal Q is most likely a bird.</p> |
| Q14 | <p>(a) They are not flexible and they allow light to pass through them.</p> <p>(b)(i) A</p> <p>(ii) D</p> |