

# Anglo-Chinese School (Junior)



## BITE-SIZED ASSESSMENT 2 (2021)

### PRIMARY 3

### SCIENCE

**Monday**

**10 May 2021**

**50 min**

Name: \_\_\_\_\_ ( ) Class: 3.( ) Parent's Signature: \_\_\_\_\_

#### INSTRUCTIONS TO PUPILS

- 1 Do not turn over the pages until you are told to do so.
- 2 Follow all instructions carefully.
- 3 There are 10 questions in this booklet.
- 4 Answer ALL questions.
- 5 The marks are given in the brackets [ ] at the end of each question or part question.




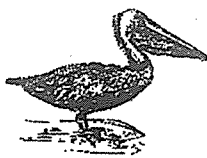
Question Paper	Possible Marks	Marks Obtained
<b>Total</b>	<b>30</b>	

---

**This question paper consists of 10 printed pages (inclusive of cover page).**

Answer questions 1 to 10 based on the instructions given for each question. The number of marks available is shown in the brackets [ ] at the end of each question. [30 marks]

1. Charlie classified some animals into groups A and B as follows:

<u>Group A</u>		<u>Group B</u>	
			
Crocodile	Tortoise	Goose	Pelican

(a) State the animal group that animals in group A and group B belong to. [1]

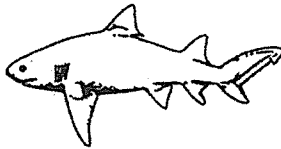
Group A : \_\_\_\_\_

Group B : \_\_\_\_\_

(b) Circle the animal that can be placed in group A. [1]



Eagle

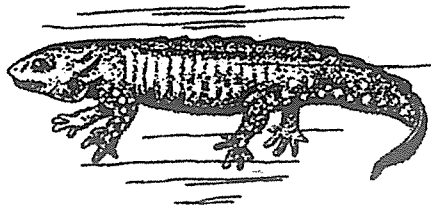


Shark



Snake

(c) The picture shows a salamander.



Charlie says that it cannot be classified in group A or B. Do you agree with Charlie? Give a reason for your answer. [1]

\_\_\_\_\_

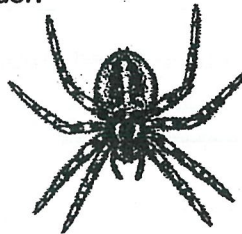
\_\_\_\_\_

SCORE	3
-------	---

2. (a) Which of the following statements about animals are true? Write the letter "T" if the statement is true and "F" if the statement is false. [2]

	Statement	T or F
(i)	All birds can fly.	
(ii)	Mammals have a hard outer covering.	
(iii)	Amphibians can live on land and in the water.	
(iv)	Reptiles do not have a constant body temperature.	

- (b) The picture shows a spider.



Explain why a spider is not an insect. [1]

---



---

3. Sulin wrote three clues about animal X.

**WHAT AM I?**

- I can fly.
- I live on land.
- I feed my young with milk.

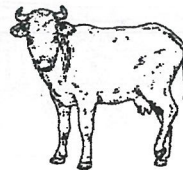
- (a) Circle animal X. [1]



Ostrich



Bat



Cow

- (b) Which animal group does animal X belong to? [1]

---

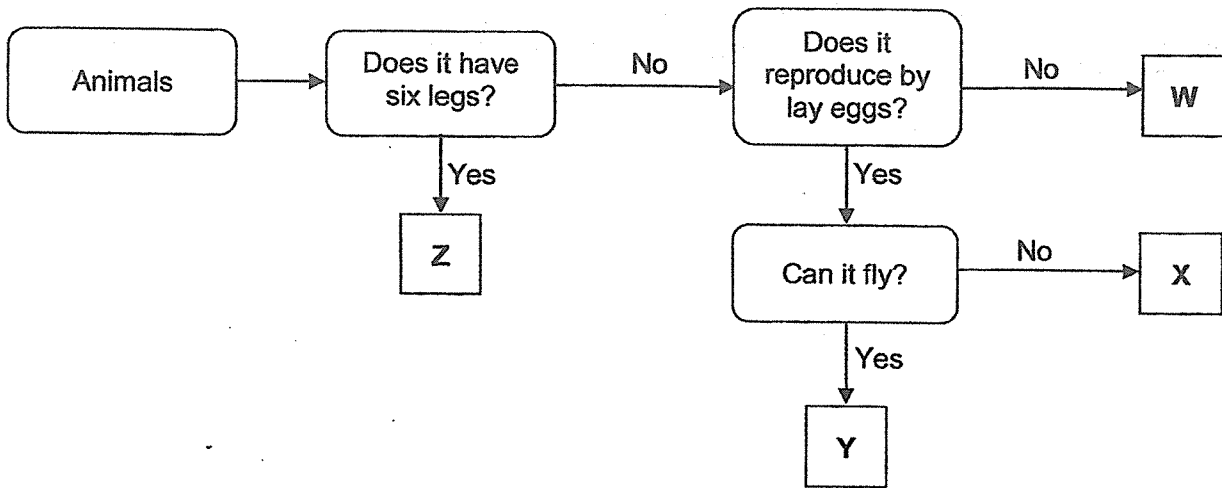
- (c) Suggest another clue about animal X that is a unique characteristic of its animal group. [1]

---



---

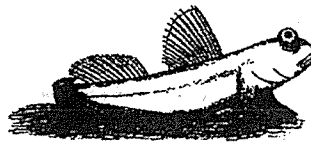
4. Study the flow chart.



(a) The pictures show a grasshopper and a mudskipper.



Grasshopper



Mudskipper

Which letter, W, X, Y or Z, in the flow chart best represents the grasshopper and mudskipper? [1]

Grasshopper : \_\_\_\_\_

Mudskipper : \_\_\_\_\_

(b) Based on the flow chart what are the characteristics of animal W? [1]

\_\_\_\_\_

\_\_\_\_\_

(c) Give an example of animal Y. [1]

\_\_\_\_\_

SCORE	3
-------	---

5. The pictures show four animals.



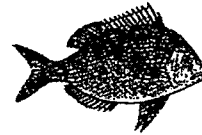
Frog



Seal



Swan



Tilapia

(a) Tick "✓" the correct characteristic(s) for each animal in the table. The first one has been done for you. [2]

Characteristic	Tick "✓"			
	Frog	Seal	Swan	Tilapia
Reproduces by laying eggs.	✓		✓	✓
(i) Uses only gills to breathe.				
(ii) Has an outer covering of hair.				
(iii) Has an outer covering of feathers.				
(iv) Breathes through moist skin and lungs.				

(b) Both the seal and the swan have a unique characteristic that the other two animals do not have. What characteristic is it? [1]

---



---

SCORE	3
-------	---

6. The pictures show mushroom G and bacteria H.



Mushroom G



Bacteria H  
(magnified many times)

(a) Fill in the blanks using the words in the box.

[2]

feed	microorganism	respond	mould
microscope	reproduce	dead	fungi

Both mushroom G and bacteria H can be found in our surroundings. Mushroom G is a \_\_\_\_\_. We can see mushroom G clearly but we need to use a special instrument to see bacteria H clearly because it is a \_\_\_\_\_. Both of them are living things which need food, air and water to survive. They \_\_\_\_\_ on other living things which may be \_\_\_\_\_ or alive. Mushroom G and bacteria H can be both useful or harmful.

(b) Sue says that mushroom G is a plant. Do you agree with her? Explain why.

[1]

---



---

SCORE	3
-------	---

7. Riza observed mould S growing on bread and fungi T growing on a tree trunk.



Mould S growing on bread



Fungi T growing on a tree trunk

- (a) How do mould S and fungi T reproduce? [1]

\_\_\_\_\_

- (b) Based on the pictures, where do mould S and fungi T get their food? [1]

Mould S : \_\_\_\_\_

Fungi T : \_\_\_\_\_

- (c) Riza observed and recorded the number of mushrooms growing on four different parts of a tree in the table.

Part of the tree	Conditions	Number of mushrooms		
		Day 1	Day 2	Day 3
A	Shady and dry	2	5	7
B	Shady and moist	4	10	15
C	Sunny and dry	0	1	2
D	Sunny and moist	1	3	4

Based on Riza's observations, which part of the tree is the most suitable for these mushrooms to grow? List the two conditions at this part of the tree.

[1]

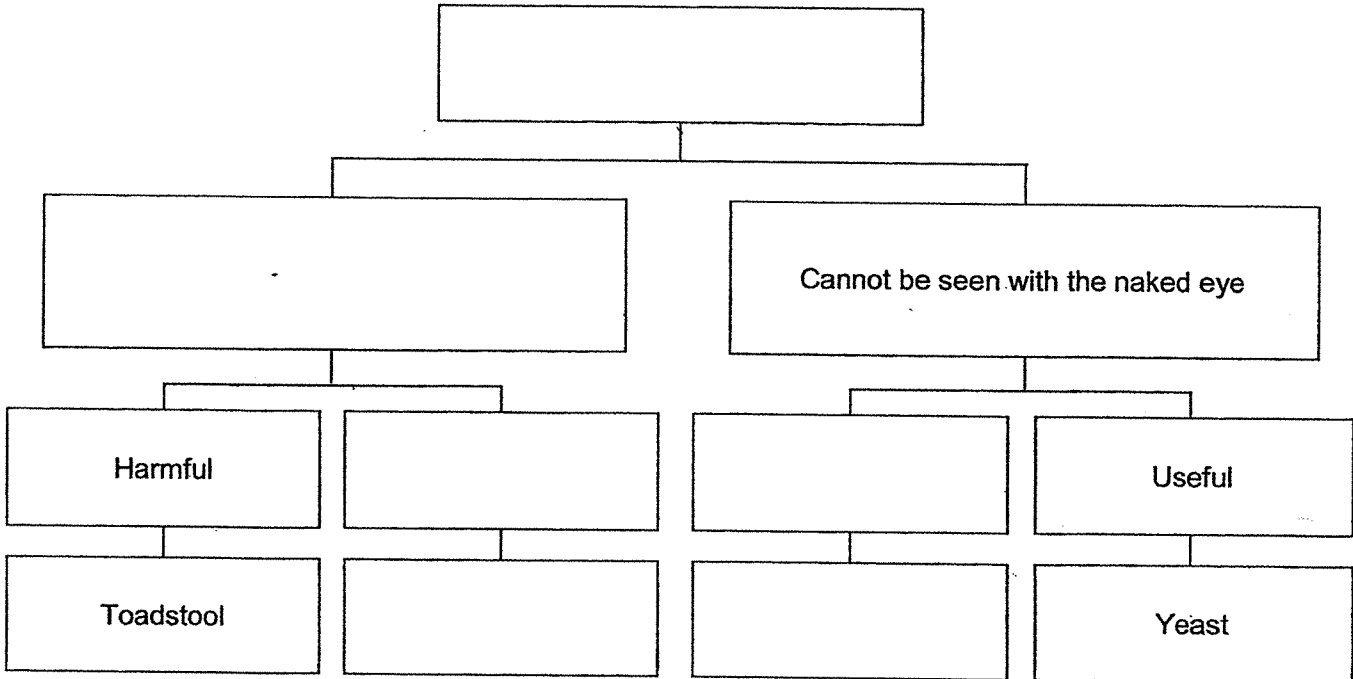
\_\_\_\_\_

SCORE	3
-------	---

8. (a) Use the most appropriate word or phrase to fill in each box in the classification chart. Use each word or phrase only once.

[2]

Fungi	Bacteria	Growing on tree trunk
Useful	Bread mould	Can be seen with the naked eye
Harmful	Shitake mushroom	Can only be seen using the microscope



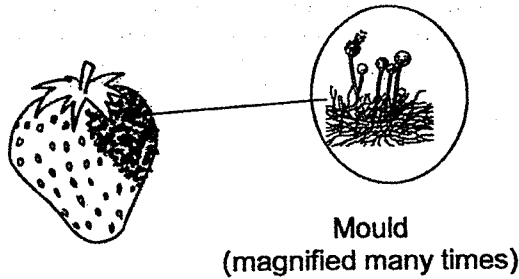
(b) Tick "✓" the places that fungi can be found growing.

[1]

	Place	Tick "✓"
(i)	On a rotting log in the field.	
(ii)	In a wet corner of the toilet.	
(iii)	On a sanitized metal door knob.	
(iv)	Inside a dry, clean and empty glass bottle.	

SCORE	3
-------	---

9. Mrs Lee left some strawberries in the cupboard for a few days. When she took it out of the cupboard, she found mould growing on it.



(a) What conditions must be present for the mould to grow? [1]

\_\_\_\_\_

(b) Mrs Lee bought more strawberries. Tick "✓" the best method to decrease the chances of mould growing on the strawberries after a few days. [1]

	Method	Tick "✓"
(i)	Dry them and put them in the refrigerator.	
(ii)	Soak them in water and put them on the table.	
(iii)	Pack them in a plastic bag and put them in a box.	

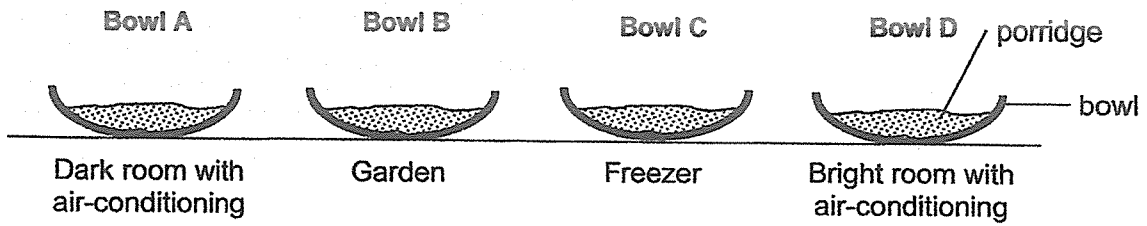
(c) Mould growing on fruit and causing them to spoil is an example of how microorganisms can be harmful to us.

Give an example of how microorganisms can be useful to us. [1]

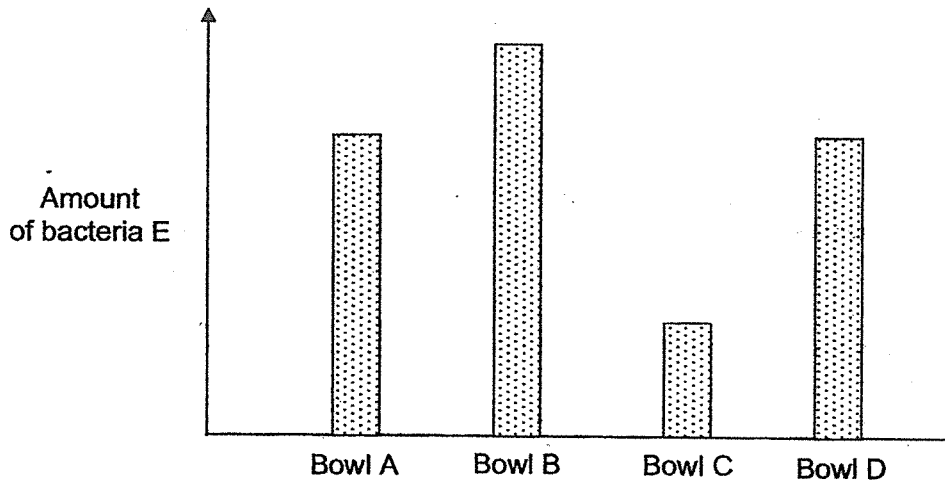
\_\_\_\_\_  
\_\_\_\_\_

SCORE	3
-------	---

10. Sam made a pot of porridge. He put the same amount of porridge into four similar bowls and placed them at different places for two days.



Sam drew the bar graph based on the amount of bacteria E found in each bowl of porridge after two days.



- (a) Which bowl of porridge had the most amount of bacteria E after two days? [1]

\_\_\_\_\_

- (b) Based on the results, which place is most suitable for Sam to store leftover porridge? Explain your answer. [1]

\_\_\_\_\_  
\_\_\_\_\_

- (c) Based on the amount of bacteria E found in the porridge in bowls A and D, what can Sam conclude about the growth of bacteria E? Tick "✓" the correct conclusion. [1]

	Conclusion	Tick "✓"
(i)	Light does not affect its growth.	
(ii)	It grows better in dark places than bright places.	
(iii)	It grows better in cool places than warm places.	

End of Paper

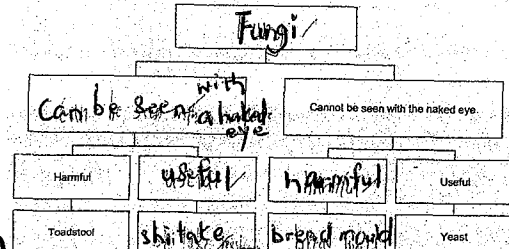
SCORE	3
-------	---



## ANSWER KEY

**YEAR : 2021**  
**LEVEL : Primary 3**  
**SCHOOL : Anglo-Chinese School (Junior)**  
**SUBJECT : SCIENCE**  
**TERM : Bite-Sized Assessment 2**

Q1	(a) Group A : reptile Group B : bird (b) circle snake (c) I agree, because the salamander has moist skin but group A and B do not have moist skin.
Q2	(a) (i) F (ii) F (iii) T (iv) T (b) The spider has eight legs but a insect has six legs.
Q3	(a) circle Bat (b) mammal (c) Mammals gives birth to their young alive.
Q4	(a) Grasshopper : Z Mudskipper : X (b) Animal W does not have six legs and do not reproduce by laying eggs. (c) eagle
Q5	(a) (i) Tilapia (ii) Seal (iii) Swan (iv) Frog (b) The seal and the swan are both warm blooded animals.
Q6	(a) Fungi microorganism feed dead (b) No. Plants can make food but mushroom cannot make food.
Q7	(a) Mould S and Fungi T reproduce by spores. (b) Mould S : Mould S get their food from the bread. Fungi T : Fungi T get their food from the tree trunk its growing on. (c) B. The two conditions are shady and moist.

<p>Q.8</p>	<div style="text-align: center;">  <pre> graph TD     Fungi --&gt; A[Can be seen with naked eye]     Fungi --&gt; B[Cannot be seen with the naked eye]     A --&gt; C[Harmful]     A --&gt; D[useful]     C --&gt; E[Toadstool]     D --&gt; F[shitake mushrooms]     B --&gt; G[harmful]     B --&gt; H[Useful]     G --&gt; I[bread mould]     H --&gt; J[Yeast]           </pre> </div> <p>(a)</p> <p>(b) tick , (i) On a rotting log in the field and (ii) In a wet corner of the toilet</p>
<p>Q.9</p>	<p>(a) Mould needs air, food and moist to grow.</p> <p>(b) tick , (i) dry them and put them in the refrigerator.</p> <p>(c) Yeast can make bread and it is useful to us.</p>
<p>Q.10</p>	<p>(a) Bowl B</p> <p>(b) Freezer, because it grows the least amount of bacteria in the porridge.</p> <p>(c) tick, (i) Light does not affect its growth.</p>

4  
END