

**CONTINUAL ASSESSMENT 1 (2017)**  
**PRIMARY 5**  
**MATHEMATICS**

**Tuesday**

**21 February 2017**

**1 h 30 min**

Name: \_\_\_\_\_ (    )    Class: 5.(    )    Parent's Signature: \_\_\_\_\_

**INSTRUCTIONS TO PUPILS**

- 1 Do not turn over the pages until you are told to do so.
- 2 Follow all instructions carefully.
- 3 Answer ALL questions.
- 4 You are not allowed to use a calculator for this paper.

<b>Section</b>	<b>Possible Marks</b>	<b>Marks Obtained</b>
<b>A</b>	<b>10</b>	
<b>B</b>	<b>15</b>	
<b>C</b>	<b>25</b>	
<b>Total</b>	<b>50</b>	

---

**This question paper consists of 14 printed pages(inclusive of cover page).**



## Optical Answer Sheet

- 1
- 2
- 3
- 4
- 5
- 6
- 7

### Section A

Questions 1 to 4 carry 1 mark each. Questions 5 to 7 carry 2 marks each.  
For each question, four options are given. One of them is the correct answer. Make your choice (1, 2, 3 or 4). Shade the correct oval (1, 2, 3 or 4) on the Optical Answer Sheet (OAS).  
(10 marks)

---

1. Which of the following is five hundred and two thousand and six-three in numeral?

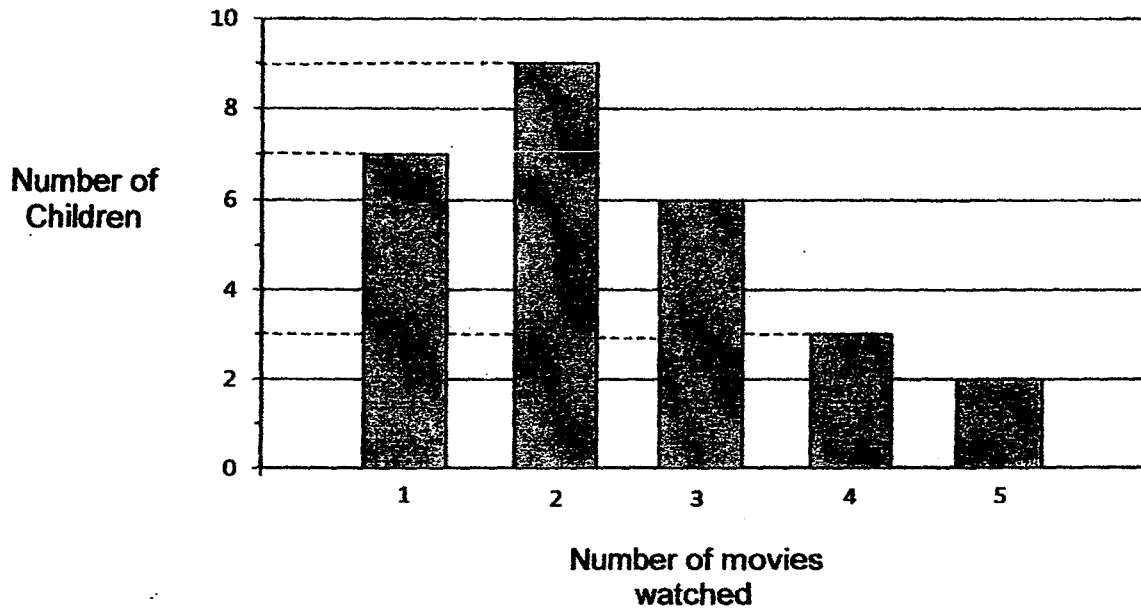
- 1) 52 063
- 2) 502 063
- 3) 520 063
- 4) 520 630

2. Which of the following values smaller than 1 whole?

- 1)  $\frac{1}{2} + \frac{2}{3}$
- 2)  $\frac{1}{2} + \frac{3}{4}$
- 3)  $\frac{1}{3} + \frac{3}{4}$
- 4)  $\frac{1}{4} + \frac{2}{3}$

--

3. The bar graph shows the number of movies watched by a group of children during the holidays. How many children watched 2 movies and more?



- 1) 7
- 2) 14
- 3) 20
- 4) 27

4. Which of the following is the smallest?

- 1) 0.605
- 2) 0.065
- 3) 0.506
- 4) 0.056

5. For every 15 bookmarks that Samuel paid for at a bookshop, he received 5 bookmarks free. Samuel got a total of 160 bookmarks from the bookshop. What was the least number of bookmarks he paid for?

- 1) 20
- 2) 40
- 3) 75
- 4) 120

6. Henry used a piece of rope to form a rectangle  $\frac{5}{12}$  m long and  $\frac{1}{3}$  m wide.

What is the length of rope he used?

- 1)  $\frac{3}{4}$  m
- 2)  $\frac{4}{5}$  m
- 3)  $1\frac{1}{6}$  m
- 4)  $1\frac{1}{2}$  m

7. Bala had four 20-cent coins and six 50-cent coins. He put a few 20-cent coins and 50-cent coins into a box. Which of the following amount of money could he have placed into the box?

- 1) \$0.80
- 2) \$1.00
- 3) \$2.60
- 4) \$3.00

**Section B**

Questions 8 to 12 carry 1 mark each. Questions 13 to 17 carry 2 marks each. Show your working clearly and write your answers in the spaces provided. For questions which require units, give your answers in the units stated. (15 marks)

---

8. Express  $\frac{7}{11}$  as a decimal. Correct your answer to 2 decimal places.

Answer : \_\_\_\_\_

9.  $6 + 8 \times 12 - (18 \times 2) \div 3 = \square$

Answer : \_\_\_\_\_

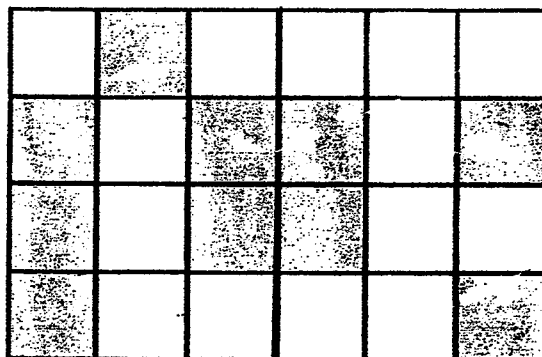
10. Mrs Wong has 290 beads. She wants to put all the beads into packets. Each packet can contain a maximum of 9 beads. What is the least number of packets she will need?

Answer : \_\_\_\_\_

11. Joshua left for his piano lesson and his watch showed 0955. He took 40 min to travel to the music school. He then realised that his watch was 5 minutes faster than the actual time. What was the actual time he arrived at the music school?  
(Give your answer in the 24-hour clock format)

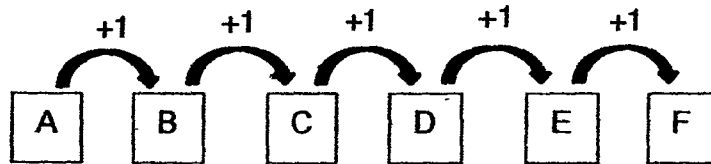
Answer : \_\_\_\_\_

12. The figure below is made up of squares. Shade two more squares so that the figure has a line of symmetry.



--

13. The diagram below shows a number pattern represented by the letters A to F.



$$B + D + F = 27$$

What is the value of F?

Answer : \_\_\_\_\_

14. Aaron, Ben and Chris share 91 stamps among themselves. Chris has twice as many stamps as Ben. Aaron has twice as many stamps as Chris. How many stamps does Aaron have?

Answer : \_\_\_\_\_

--



15. After spending \$38 on a bag and \$67 on a pair of shoes, Minah had  $\frac{2}{5}$  of her money left. How much money did Minah have at first?

Answer : \$ \_\_\_\_\_

16. The table below shows the late charges for a book borrowed from a library.

First day	\$0.25
Subsequent day	\$0.15

Ahmad borrowed a book from the library. He returned the book a few days later. He paid \$0.70 for the late charges. How many days were the book overdue?

Answer : \_\_\_\_\_

17. Complete the number pattern below.

0.7, 2.1, 6.3, \_\_\_\_\_, 56.7, 170.1

Answer : \_\_\_\_\_

--

**Section C**

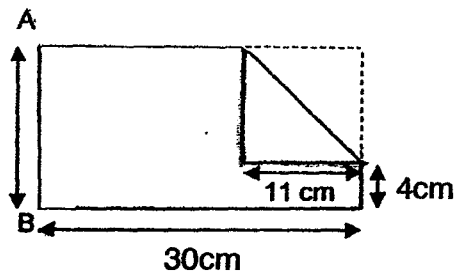
For questions 18 to 24, show your working clearly and write your answers in the spaces provided. The number of marks available is shown in brackets [ ] at the end of each question or part-question. (25 marks)

---

18. There are 426 cakes and pies. There are 220 more pies than cakes.. How many cakes are there?

Answer : \_\_\_\_\_ [3]

19. May has a rectangular piece of paper. She folded a corner of it as shown below.

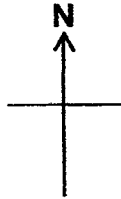


- a) What is the length AB?  
b) Find the area of the paper at first.

Answer : a) \_\_\_\_\_ [1]

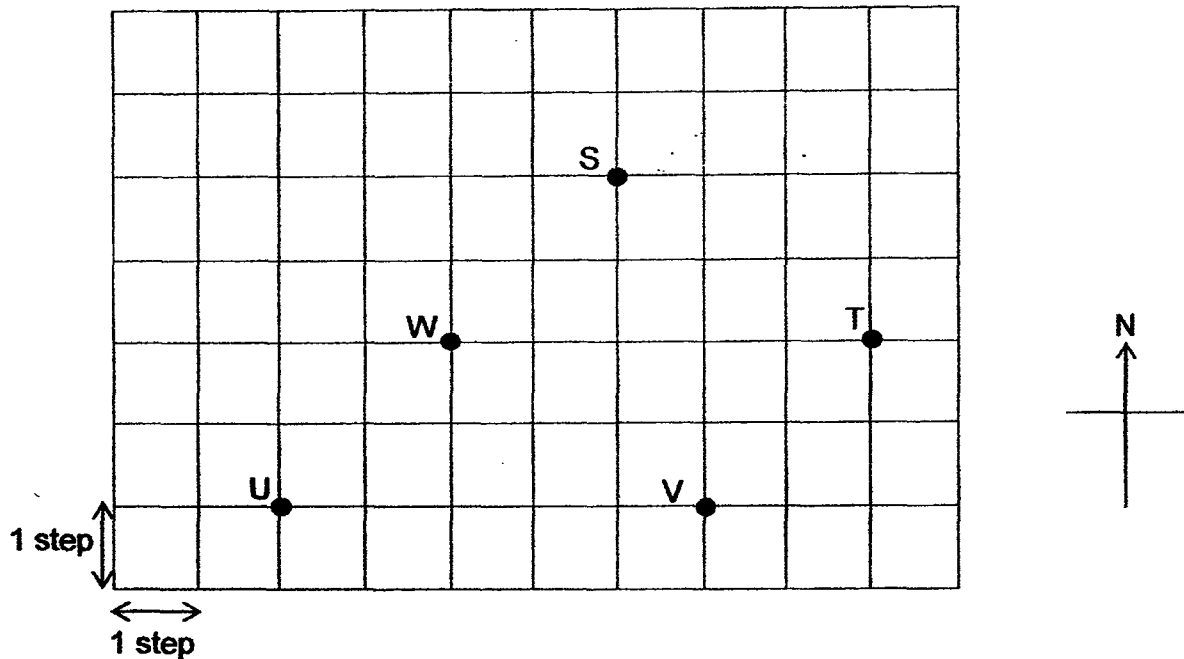
b) \_\_\_\_\_ [2]

20. a) If Russell makes a  $\frac{3}{4}$  turn in a clockwise direction, he will face North-West. Where will Russell face if he makes a  $225^\circ$  anti-clockwise turn from his original position?



Answer : \_\_\_\_\_ [1]

- (b) Study the diagram below.


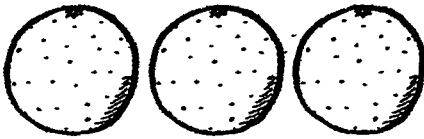


Lucy was at a certain point. She walked 4 steps due south, 3 steps due east, 2 steps due north and then 5 steps due west. She ended at Point W. At which point was her starting position?

Answer : \_\_\_\_\_ [2]

--

21. Mrs Lee and Mrs Wong bought fruits from a stall at the prices as shown below.

Mangoes	Oranges
	
2 for \$5	3 for \$2

- a) Mrs Lee bought 24 mangoes. How much did she spend?
- b) Mrs Wong bought an equal number of mangoes and oranges. She spent \$33 more on mangoes than oranges. Find the total number of mangoes and oranges she bought.

Answer : a) \_\_\_\_\_ [1]

b) \_\_\_\_\_ [3]

22. Mr Lim makes food deliveries. When the order is delivered on time, he would be paid \$12. When the order is deliveries late, he would only be paid \$6. On Monday, Mr Lim made 15 deliveries and was paid \$144. How many order did he deliver on time?

Answer : \_\_\_\_\_ [4]

--

23. There were some marbles in a box. Able took  $\frac{2}{5}$  of the marbles, Ben took  $\frac{1}{4}$  of the marbles and Charles took the rest.
- a) What fraction of the marbles did Charles take?
- b) Given that Charles took 42 more marbles than Ben, how many marbles did the boy have altogether?

Answer : a) \_\_\_\_\_ [2]

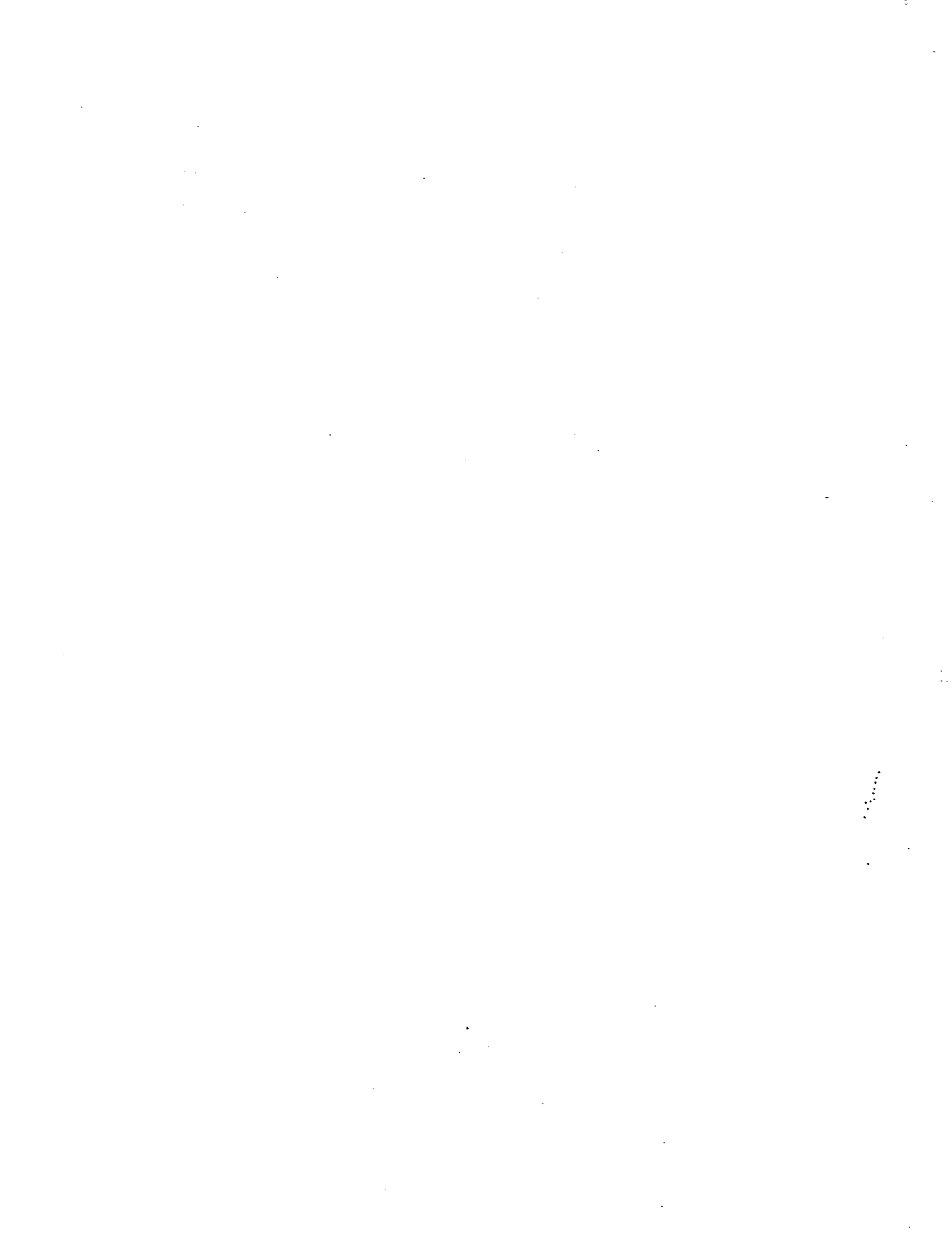
b) \_\_\_\_\_ [2]

24. The mass of a pail is 4.3 kg when it is completely filled with sand. The mass becomes 2.5 kg when  $\frac{3}{4}$  of the sand in the pail is removed. What is the mass of the pail when it is empty?

Answer : \_\_\_\_\_ [4]

**End of Paper**

--





School: ACS  
 Level: P5  
 Subject: Maths  
 Term: CA1

Q1	Q2	Q3	Q4	Q5	Q6	Q7
2	4	3	4	4	4	3

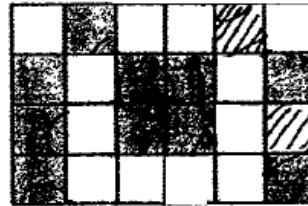
Q8)  
0.64

Q9) 90

Q10) 33

Q11)  
10 : 30

Q12)



Q13) 11

Q14)  
52 stamps

Q15)  
\$175

Q16) 4  
days

Q17) 18.9

Q18)  $426 - 220 = 206$   
 2 units  $\rightarrow$  206  
 1 unit  $\rightarrow$  103

Q19) a)  $(11+4)\text{cm} = 15\text{ cm}$   
 b)  $15\text{cm} \times 30\text{cm} = 450\text{ cm}^2$

Q20) a) South  
 b) Point S

Q21) a)  $24 \div 2 = 12$   
 $12 \times \$5 = \$60$   
 b) Multiples of 2 : 2, 4, 6, 8  
 Multiples of 3 : 3, 6, 9

6 mangoes cost \$15  
 6 oranges cost \$4  
 $\$15 - \$4 = \$11$   
 $\$33 \div \$11 = 3$   
 $6 \times 3 = 18$   
 $18 \times 2 = 36$

Q22) Assume all deliveries are on time  
 $15 \times 12 = 180$   
 $180 - 144 = 36$   
 $12 - 6 = 6$   
 $36 \div 6 = 6$  (not on time)  
 $15 - 6 = 9$  (on time)

Q23) a)  $\frac{2}{5} = \frac{8}{20}$   
 $\frac{1}{4} = \frac{5}{20}$   
 $\frac{8}{20} + \frac{5}{20} = \frac{13}{20}$   
 $\frac{20}{20} - \frac{13}{20} = \frac{7}{20}$

b) A = 8 units  
B = 5 units  
C = 7 units

2 units → 42  
1 unit → 21  
21 x 20 = 420

Q24)  $4.3 - 2.5 = 1.8$

3 units → 1.8  
1 unit → 0.6  
 $0.6 \times 4 = 2.4$   
 $4.3 - 2.4 = 1.9\text{kg}$

End