

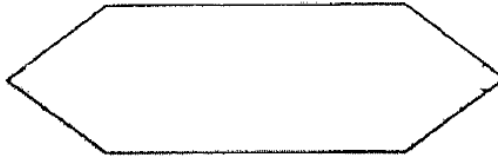
Geometry Worksheet

P5 Mathematics CA2 2015

References:
P5 Math CA2 papers of NHPS, RS

For each question, four options are given. One of them is the correct answer.
Make your choice (1,2,3 or 4).

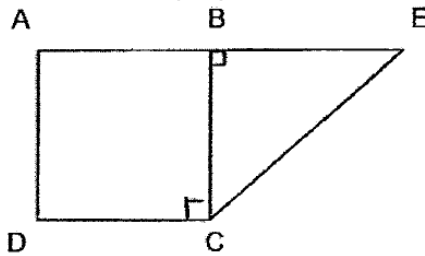
1. In the figure below, how many angles inside the figure are lesser than a right angle?



- (1) 0
- (2) 2
- (3) 6
- (4) 4

()

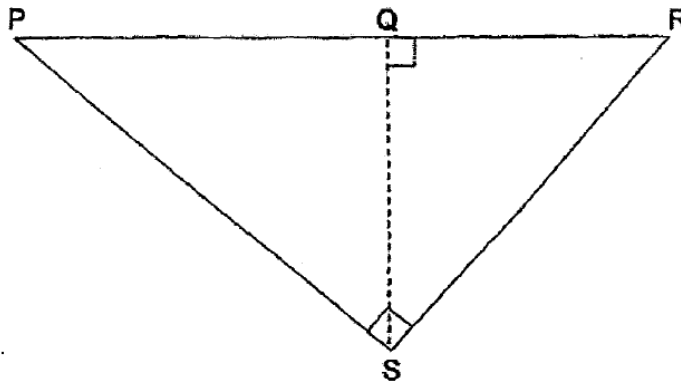
2. In the figure below, ABCD is a square and BCE is a right-angled triangle. Which of the following pairs of lines are not perpendicular?



- (1) DC and CE
- (2) AB and BC
- (3) BC and CD
- (4) BE and BC

()

3. Which of the following cannot be the height of triangle PRS?



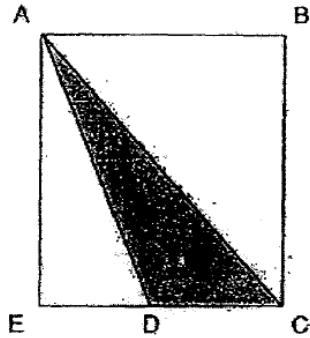
- (1) PR
- (2) SR
- (3) PS
- (4) QS

()

4. Ahmad is facing West now. He makes a $\frac{3}{4}$ turn in the clockwise direction. In which direction will he be facing in the end?
- (1) North
 - (2) South
 - (3) North-East
 - (4) South-East
- ()

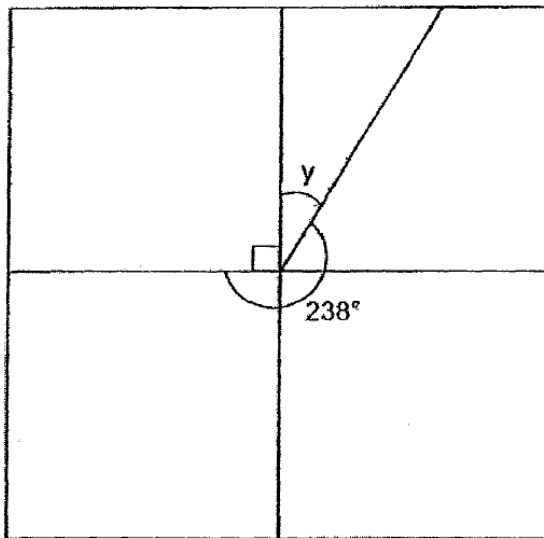
Write your answers in the spaces provided. For questions which require units, give your answers in the units stated.

5. In the figure, ABCE is a rectangle. Identify the height of the shaded triangle ACD, when the base is DC.



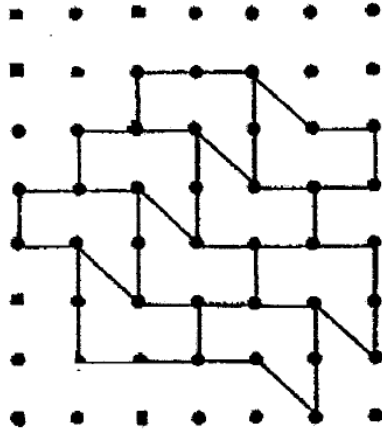
Ans: _____

6. There are 4 squares in the figure. Find $\angle y$.

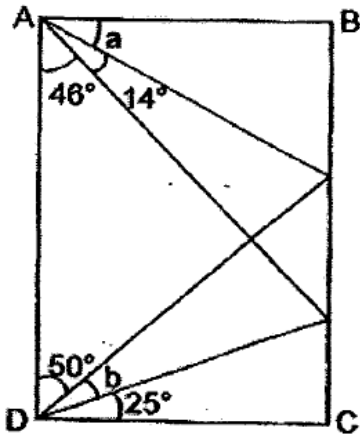


Ans: _____ °

7. Extend the tessellation below by drawing 2 more unit shapes.

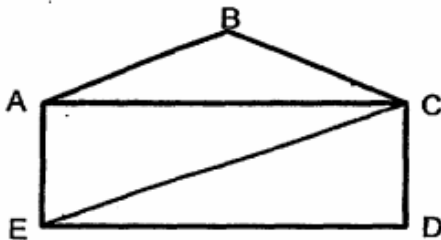


8. The diagram shows a rectangle ABCD, which is not drawn to scale. Find the value of $\angle a + \angle b$.



Ans: _____ °

9. In the figure (not drawn to scale) shown below, ABC is an isosceles triangle and ACDE is a rectangle. How many angles inside this figure are less than 90° ?



Ans: _____

