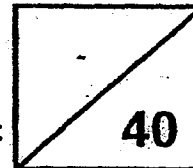




Rosyth School
Topical Test 2015
SCIENCE
Primary 4

Name: _____

Total
Marks:



Class: Pr 4 _____

Register No. _____

Duration: 1 hour

Date: 2 March 2015

Parent's Signature: _____

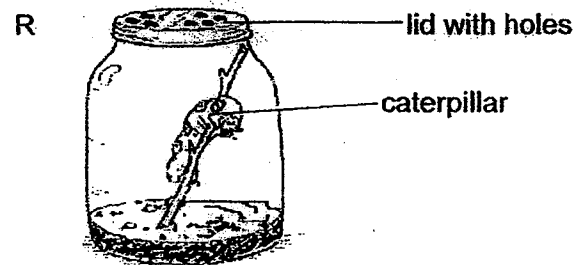
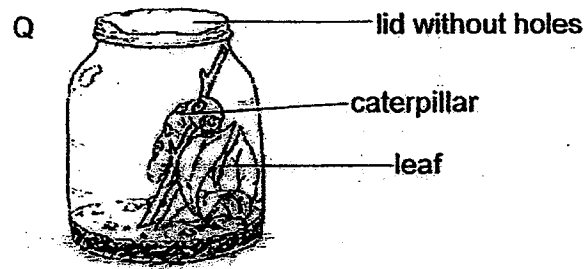
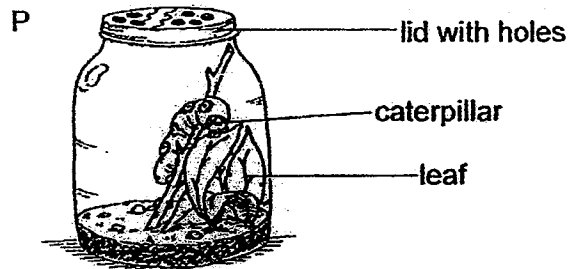
Instructions to Pupils:

1. Do not open the booklet until you are told to do so.
2. Follow all instructions carefully.
3. This paper consists of 2 parts, Part I and Part II.
4. For questions 1 to 10, write the correct answer in the brackets provided.
5. For questions 11 and 17, give your answers in the spaces provided in Part II.

	Maximum	Marks Obtained
Part I	20 marks	
Part II	20 marks	
Total	40 marks	

* This booklet consists of 12 pages.

3. Arun observed some caterpillars kept in three different containers in the dark as shown below.



Only the caterpillar in container P survived while the other caterpillars in Q and R died. Which of the following is/are possible reason(s) that the caterpillars died?

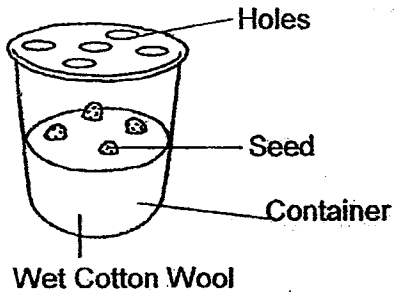
- A: Lack of air
- B: Lack of food
- C: Lack of sunlight

- (1) A only
- (3) A and B only

- (2) B only
- (4) B and C only

()

6. Wei Hao placed the set-up as shown below near the window.

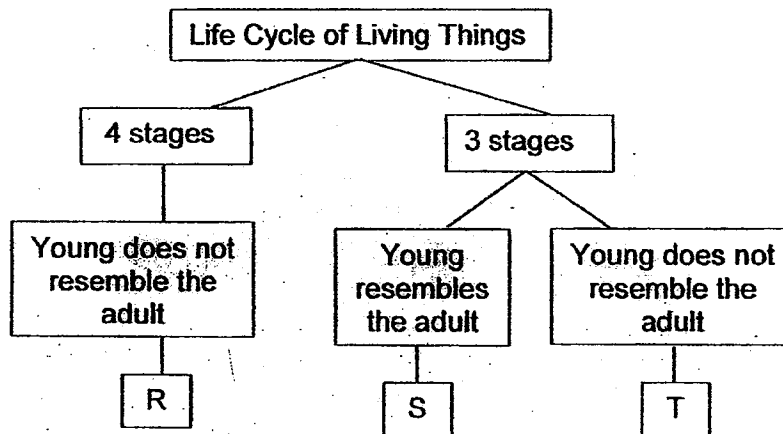


After a few days, the seeds germinated. Which of the following caused the seeds to germinate?

- A: Presence of air
- B: Presence of light
- C: Presence of water
- D: Presence of warmth

- (1) A and B only
 - (2) C and D only
 - (3) A, C and D only
 - (4) A, B and C only
- ()

7. Study the diagram below.



Which one of the following represents R, S and T?

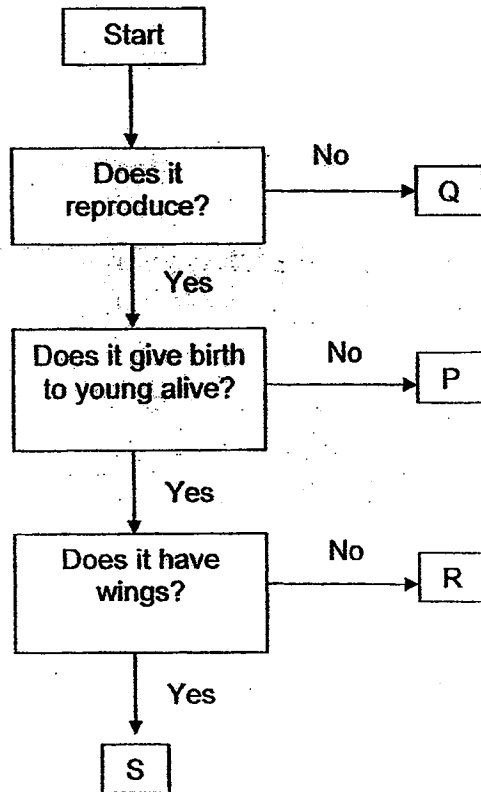
	R	S	T
(1)	Frog	Rose plant	Mealworm Beetle
(2)	Rose plant	Mealworm Beetle	Frog
(3)	Mealworm Beetle	Rose plant	Frog
(4)	Mealworm Beetle	Frog	Rose plant

()

Part II (20 Marks)

For questions 11 to 17, write your answers in the space provided.

11. Study the flow chart below.



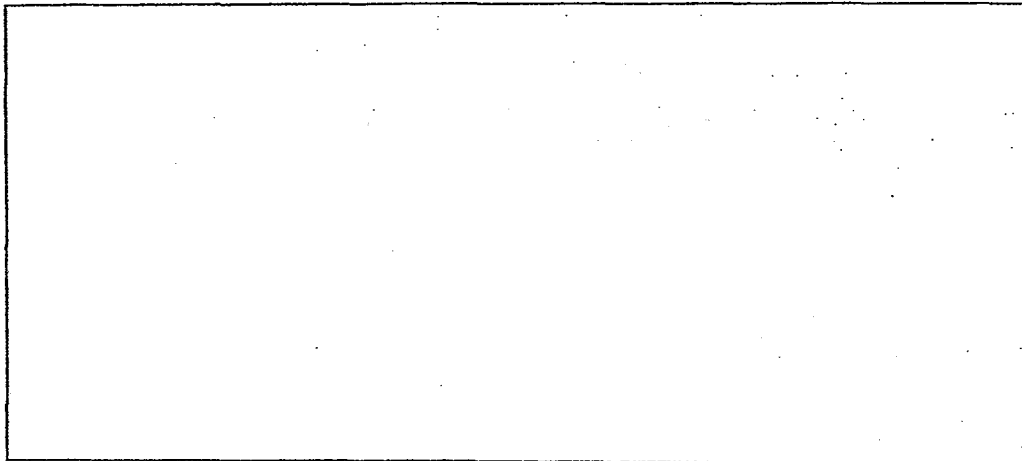
(a) Based on the flow chart, state two similarities between R and S. [2m]

(b) In the above chart, which letter would represent a cat? Support your answer. [1m]

13. The table below describes the development of a bee.

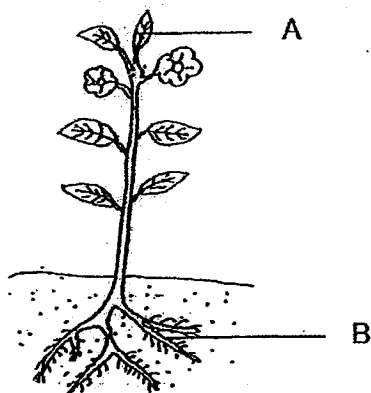
Order	Development of a bee
1	Queen bee lays egg
2	Worker bee feeds hatched larva
3	Larva reaches full growth
4	Larva becomes a pupa
5	Adult bee leaves

a) Draw the life cycle of a bee in the box below and name each stage. [1m]



b) Why is the life cycle important to the bee? [1m]

15. Jack saw a plant in his garden as shown below.

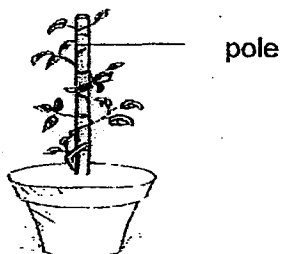


(a) State the function of the parts of the plant in the table below. [2m]

Part	Function
A	
B	

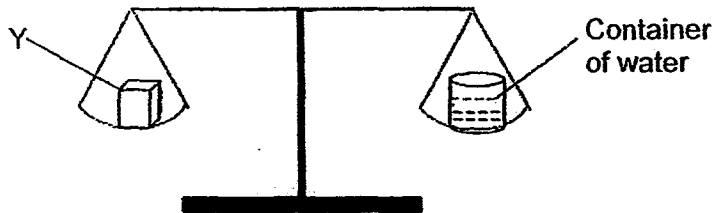
(b) Is the plant above an adult plant? Support your answer. [1m]

Jack saw another plant in his garden as shown below.



(c) Why does this plant need a pole? [1m]

17. Hari placed an object Y on a beam balance as shown below.



(a) Based on the above observation, what can we infer about the masses of object Y and the container of water? [1m]

(b) Using only the materials above, describe how you would show that water is a matter. [1m]

(c) What observation would you make in (b) to show that water is a matter? [1m]

End of Paper

EXAM PAPER 2015

LEVEL : PRIMARY 4

SCHOOL : ROSYTH SCHOOL

SUBJECT : SCIENCE

TERM : CA1

Q1	Q2	Q3	Q4	Q5	Q6	Q7	Q8	Q9	Q10
3	3	3	1	3	3	3	3	4	3

Q11a. They reproduce and give birth to young alive.

Q11b. R, it gives birth to young alive and does not have wings.

Q12a. All living things need water and food to survive, living things reproduce.

Q12b. The water plants produce oxygen.

Q12c. So that predators will not eat all the eggs and some eggs will hatch.

Q13a. egg → larva (young) → pupa → adult (bee)

Q13b. To ensure its species will continue to live on earth.

Q14a. N, because organism P has six legs and N has six legs.

Q14b. Day 12, when an insect becomes a pupa, it will stop eating.

Q15a. A - To make food, B - To support the plant and absorb water.

Q15b. Yes, It has flowers.

Q15c. It has a weak stem so the plant needs the pole to support the plant upright.

Q16a. G and F

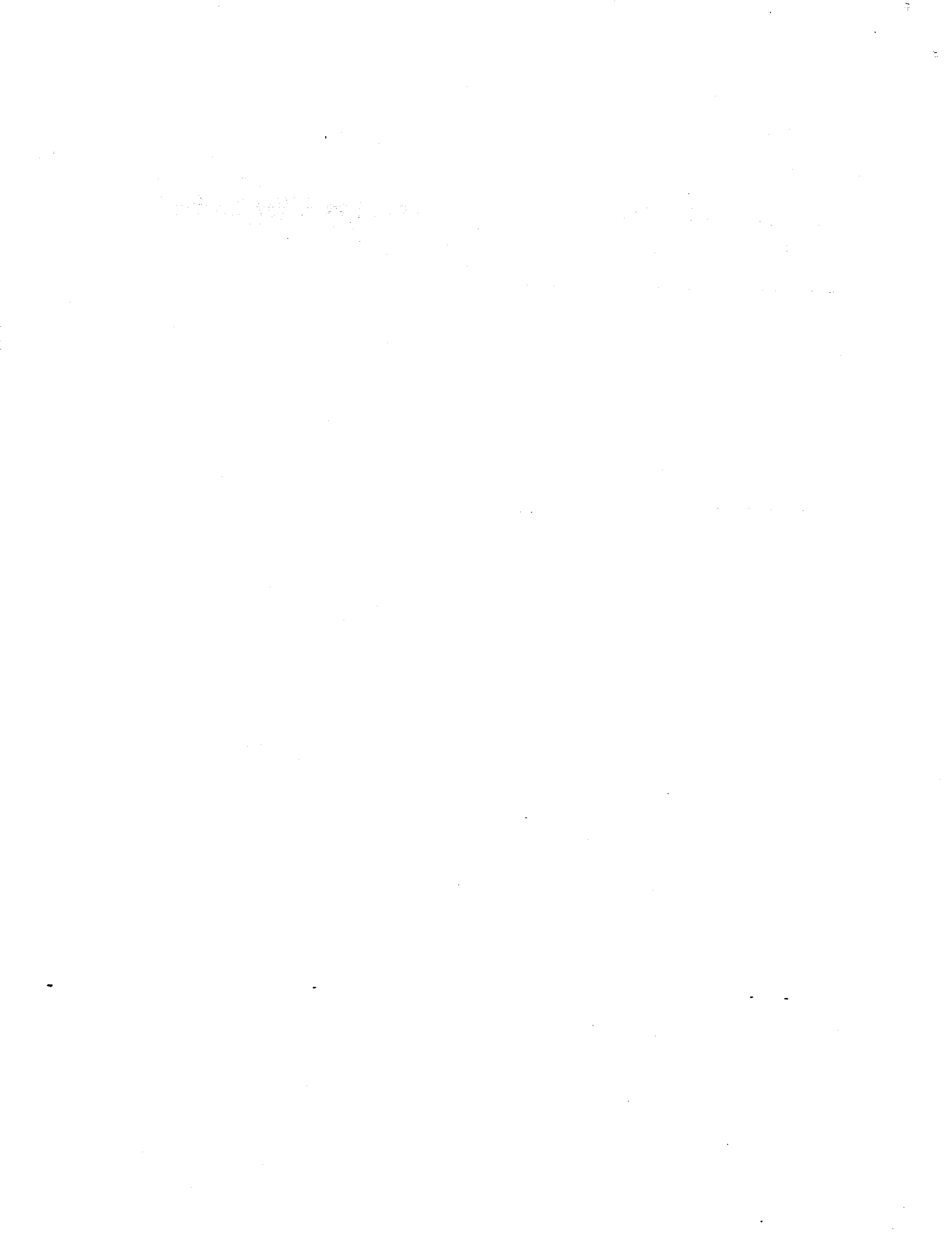
Q16b. Both have air, water and warmth.

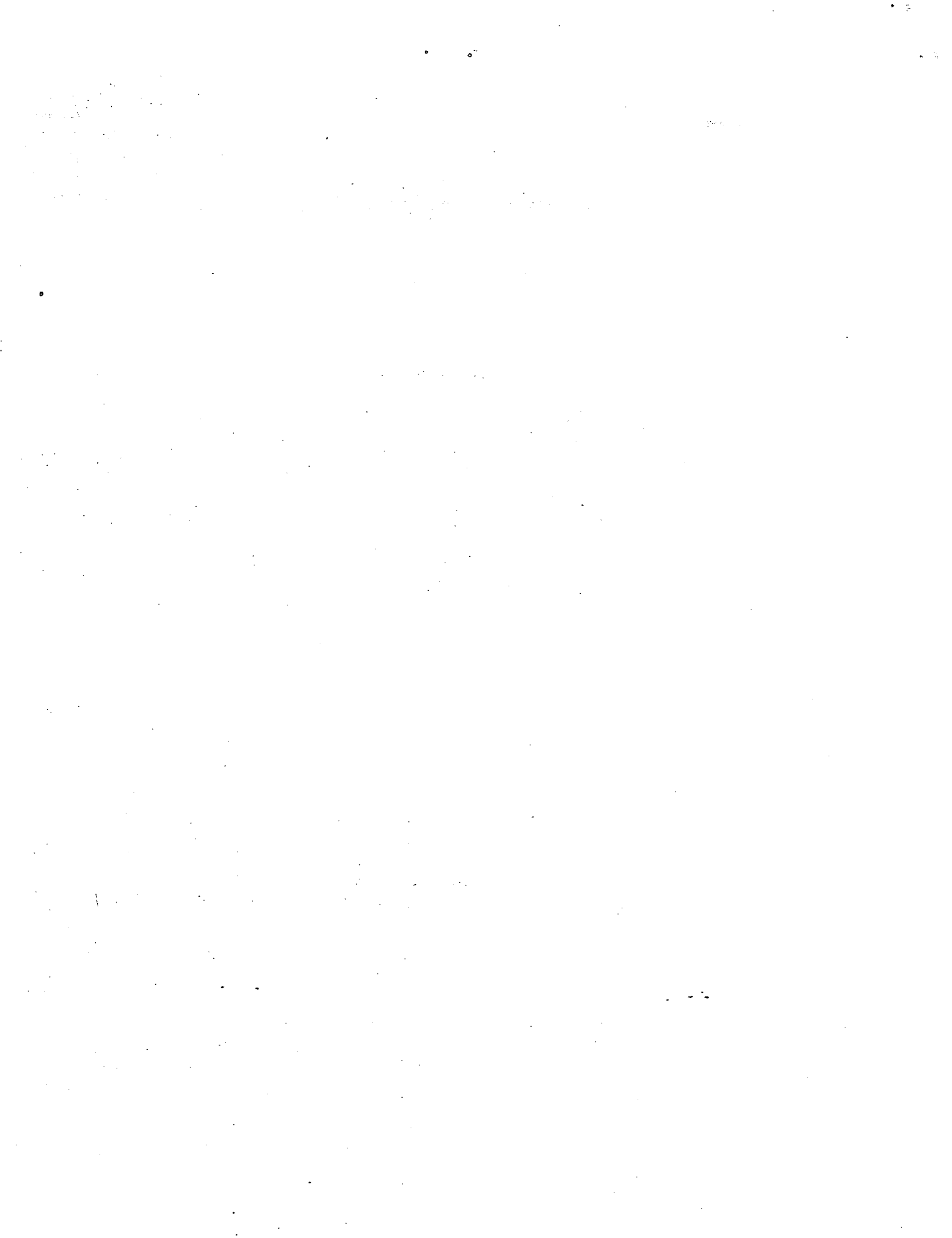
Q17a. They have the same mass.

Q17b. Pour away the water in the container and place the empty container on the beam balance.

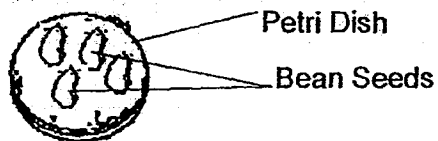
Q17c. The lever balance will tilt towards the object Y.

THE END





16. Hasan prepared four set-ups similar to the one shown below.



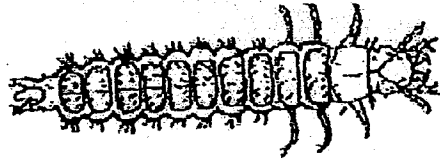
He prepared the four set-ups according to the table shown below.

Set-up	Presence of Water	Place
E	√	Refrigerator
F	√	Cupboard
G	√	Near Window
H	X	Kitchen Table

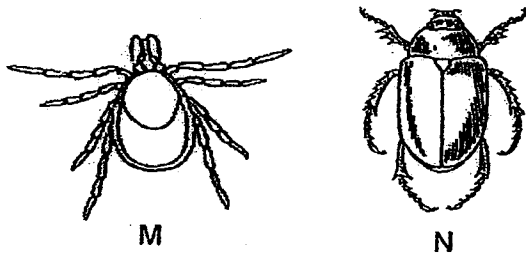
(a) In which two set-ups would the seeds most likely germinate? [1m]

(b) Explain your answer in (a). [1m]

14. The diagram below shows the young of an organism P.



(a) Based on the diagram above, which of the two organism below, M or N, is most likely the adult stage of organism P? Support your choice. [1m]



(b) Peter observed organism P over 2 weeks till it changed to an adult. He counted the leaves that were eaten by organism P as shown in the table below.

Day	Number of leaves eaten
1	2
3	4
5	5
7	3
9	1
12	0

On which day was organism P a pupa? Support your answer. [1m]

12. Gopal kept some fish in a tank and recorded his observation in the following table.

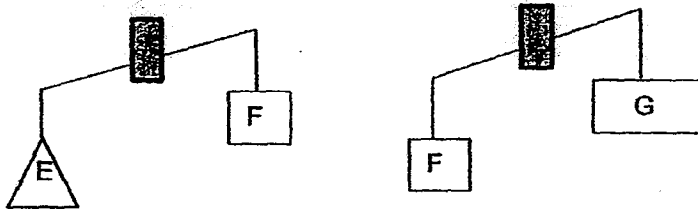
Week	Water	Food	Number of fish in the tank
1	√	√	10
2	√	√	16

(a) Based on the table above, state two characteristic of living things. [2m]

(b) At the end of week 2, Gopal noticed some fish swimming towards the surface of the water. He added some water plants into the tank. Explain how the water plants would help the fish. [1m]

(c) Why does fish lay many eggs at one time? [1m]

8. The diagram below shows two lever balance with objects E, F and G.



Arrange E, F and G according to their masses beginning with the lightest.

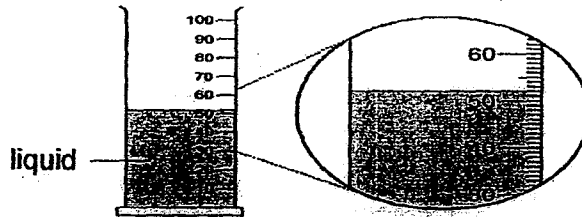
	Lightest	→	Heaviest	
(1)	F		G	E
(2)	E		F	G
(3)	G		F	E
(4)	G		E	F

()

9. Which of the following cannot be classified as a matter?

- (1) iron
 - (2) rain
 - (3) smoke
 - (4) sound
- ()

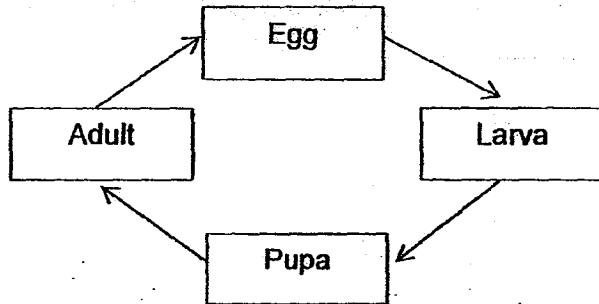
10. What is the volume of the liquid shown below?



- (1) 40ml
 - (2) 50ml
 - (3) 52ml
 - (4) 55ml
- ()

End of Part I

4. Study the life cycle as shown below.

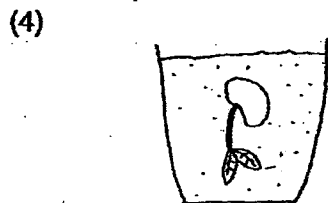
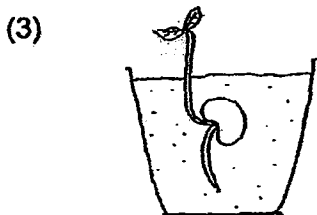
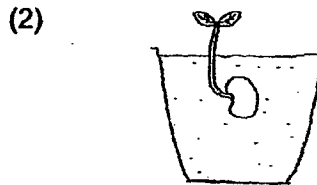
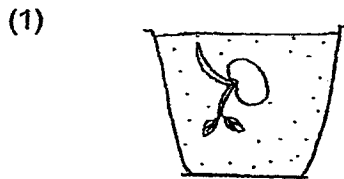


Which of the statement(s) below is/are correct?

- A. Some insects have the above life cycle.
- B. All insects and mammals have the above life cycle.
- C. Birds, fish and mammals have the above life cycle.

- (1) A only
- (2) B only
- (3) C only
- (4) A and B only ()

5. Lincoln was observing the germination of a seed. Which one of the following would he observe?

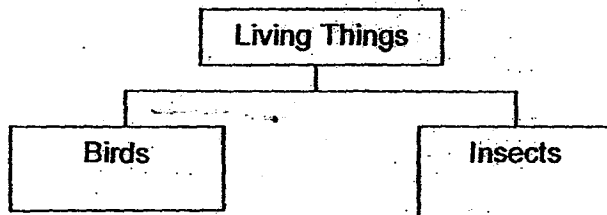


()

Part I (20 Marks)

For each question from 1 to 10, four options are given. One of them is the correct answer. Make your choice (1, 2, 3 or 4) and write your answer in the bracket provided.

1. Study the classification chart.



Which one of the following characteristic was used to classify the living things?

- (1) The way they move
- (2) The way they reproduce
- (3) The type of body covering they have
- (4) The number of stages in their life cycle ()

2. Which of the following statement(s) is/are true of a cockroach and a mealworm beetle?

- A: Both lay eggs in water.
- B: Both the youngs resemble the adults.
- C: Both the youngs do not have wings.
- D: Both have 4 stages in their life cycles.

- (1) A only
- (2) A and B only
- (3) C only
- (4) C and D only ()