

Anglo-Chinese School (Junior)



SEMESTRAL ASSESSMENT 2 (2015)

PRIMARY 4

MATHEMATICS

Booklet A

Monday

2 November 2015

1 h 45 min

Name: _____ () Class: 4.()

INSTRUCTIONS TO PUPILS

- 1 Do not turn over the pages until you are told to do so.
- 2 Follow all instructions carefully.
- 3 There are 20 questions in this booklet.
- 4 Answer ALL questions.
- 5 Shade your answers in the Optical Answer Sheet (OAS) provided.

Section A (20 × 2 marks)

For each question, four options are given. Choose the correct answer and shade the correct oval (1, 2, 3 or 4) on the Optical Answer Sheet provided.

1. 65 563 rounded off to the nearest hundred is _____.
 - (1) 65 000
 - (2) 65 500
 - (3) 65 600
 - (4) 66 000

2. 42 thousands and 2 tens is the same as _____.
 - (1) 422
 - (2) 4220
 - (3) 42 002
 - (4) 42 020

3. How many one-fifths are there in 3 wholes?
 - (1) $1\frac{2}{3}$
 - (2) $\frac{3}{5}$
 - (3) 5
 - (4) 15

4. $\frac{1}{3} + \frac{1}{12} = \underline{\hspace{2cm}}$.

(1) $\frac{1}{36}$

(2) $\frac{2}{3}$

(3) $\frac{2}{15}$

(4) $\frac{5}{12}$

5. In the number 43.57, the digit $\underline{\hspace{1cm}}$ is in the tenths place.

(1) 5

(2) 7

(3) 3

(4) 4

6. Which number below is 2.3 less than 4.69?

(1) 2.39

(2) 4.46

(3) 4.92

(4) 6.99

7. When 6 795 is divided by 8, the remainder is $\underline{\hspace{1cm}}$.

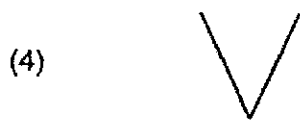
(1) 1

(2) 2

(3) 3

(4) 4

8. Which of the following figures has parallel lines?



9. 572 hundredths is the same as _____.

- (1) 0.572
- (2) 5.72
- (3) 57.2
- (4) 572.0

10. Suresh had 1 m. of string. He cut 3 pieces of string, each measuring 20 cm and gave them to his sister. What fraction of the string was left?

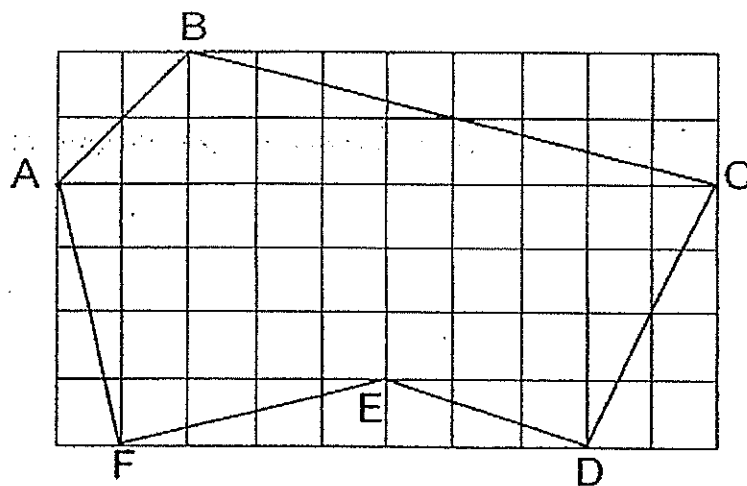
(1) $\frac{1}{3}$

(2) $\frac{2}{5}$

(3) $\frac{3}{5}$

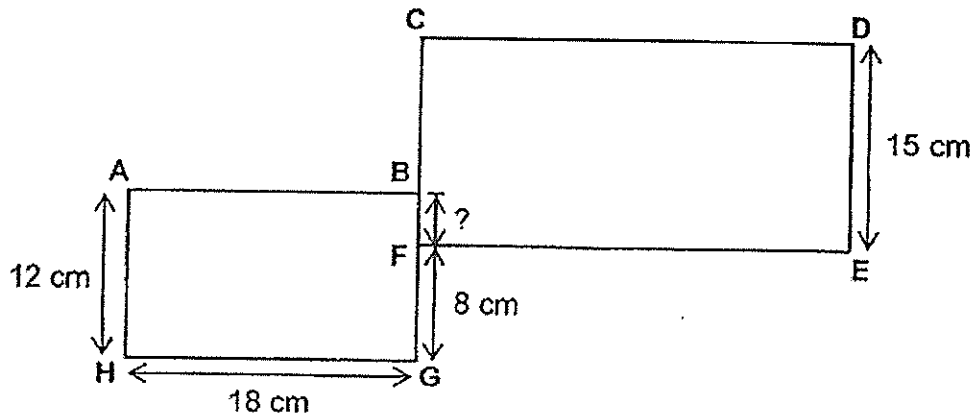
(4) $\frac{1}{20}$

11. Figure ABCDEF is drawn on the square grid shown. Which one of the following statements is true?

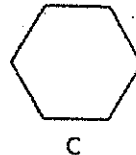
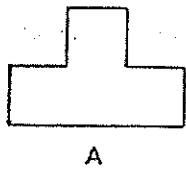


- (1) BC is a vertical line
- (2) AB is parallel to CD
- (3) AF is perpendicular to FE
- (4) DE is a horizontal line

12. All lines in the figure below meet at right angles. Find the length of BF.



- (1) 6 cm
(2) 7 cm
(3) 10 cm
(4) 4 cm
13. Zac wants to choose the unit shape that can tessellate to make his own gift wrapping paper pattern. Which of these shapes can he choose from?

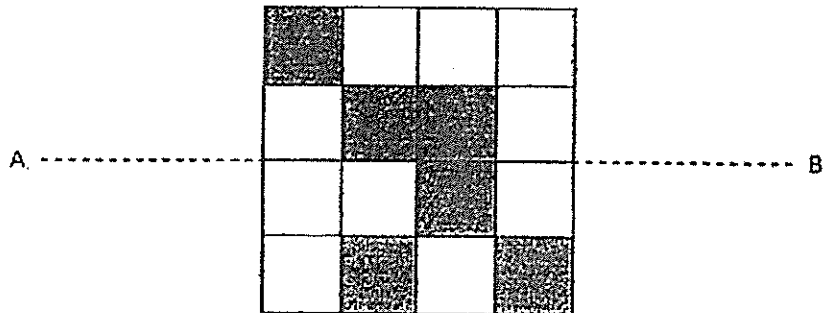


- (1) A only
(2) A and B only
(3) A and C only
(4) A, B and C

14. The movie started at 19 15. It ended at 21 05. How long was the movie?

- (1) 1 h 10 min
- (2) 1 h 50 min
- (3) 2 h 10 min
- (4) 2 h 50 min

15. The dotted line AB is a line of symmetry. What is the least possible number of squares that you should shade to make the figure symmetrical?



- (1) 1
- (2) 2
- (3) 3
- (4) 4

16. Mrs Kaili bought 4 kilograms of grapes. Each kilogram cost \$6.45. She paid the cashier \$50. How much change did she receive?

- (1) \$24.20
- (2) \$25.80
- (3) \$39.50
- (4) \$43.55

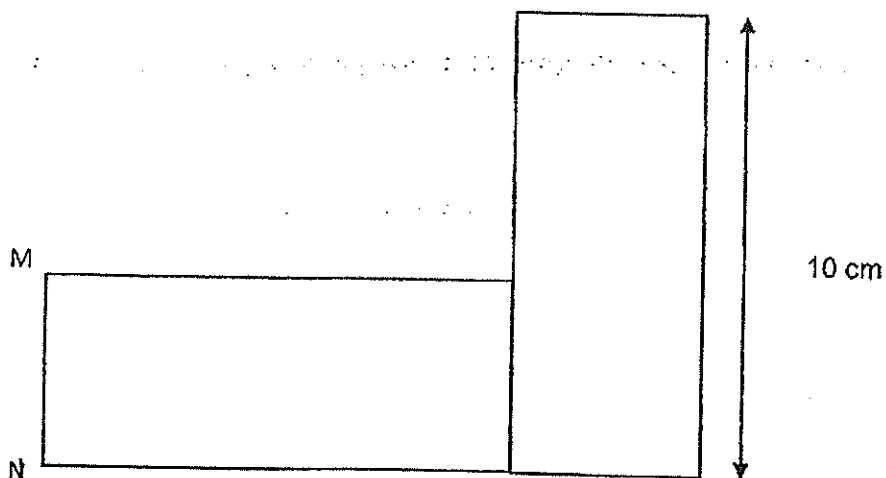
The table shows the growth of a plant in terms of its height. Study the table and answer Question 17.

Week	1st	2 nd	3rd	4th	5th
Height (cm)	5.5	12	18	22.5	28

17. During which one-week period was the growth the most?

- (1) Between the 1st week and the 2nd week
- (2) Between the 2nd week and the 3rd week
- (3) Between the 3rd week and the 4th week
- (4) Between the 4th week and the 5th week

18. The figure below is made up of 2 similar rectangles. The area of the whole figure is 80 cm^2 . Find the length of MN.

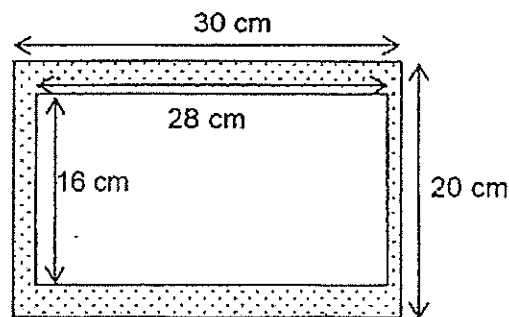


- (1) 8 cm
- (2) 10 cm
- (3) 20 cm
- (4) 4 cm

19. Peter made 76 paper aeroplanes in four days. Each day after the first day, he made 6 more paper aeroplanes than the day before. How many paper aeroplanes did he make on the first day?

- (1) 10
- (2) 13
- (3) 17
- (4) 18

20. A photograph measuring 28 cm by 16 cm is mounted on a frame measuring 30 cm by 20 cm. Find the area of the border.



- (1) 152 cm^2
- (2) 188 cm^2
- (3) 448 cm^2
- (4) 600 cm^2

End of Booklet A

Anglo-Chinese School (Junior)



SEMESTRAL ASSESSMENT 2 (2015)

PRIMARY 4 MATHEMATICS

Booklet B

Monday

2 November 2015

1 h 45 min

Name: _____ () Class: 4.() Parent's Signature: _____

INSTRUCTIONS TO PUPILS

- 1 Do not turn over the pages until you are told to do so.
- 2 Follow all instructions carefully.
- 3 There are 25 questions in this booklet.
- 4 Answer ALL questions.

Section	Possible Marks	Marks Obtained
A	40	
B	40	
C	20	
Total	100	

This question paper consists of 12 printed pages (inclusive of cover page).

Section B (20 × 2 marks)

For each question, write your answer in the boxes provided. Give your answer in the units stated.

21. Write twenty-eight thousand and forty-six in figures.

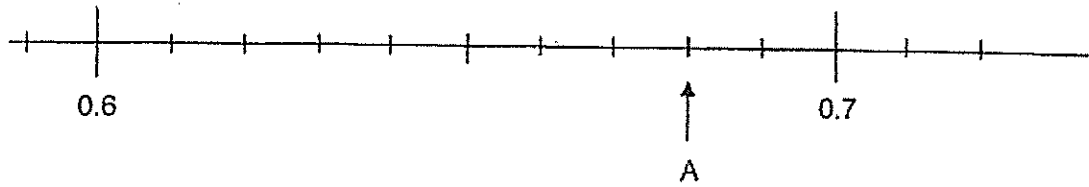
22. Find the product of 2480 and 7.

23. Which two of the fractions below are smaller than $\frac{1}{2}$?

$$\frac{3}{4}, \frac{4}{9}, \frac{5}{11}, \frac{6}{12}$$

24. Find the value of $1 - \frac{1}{8} - \frac{3}{4}$.

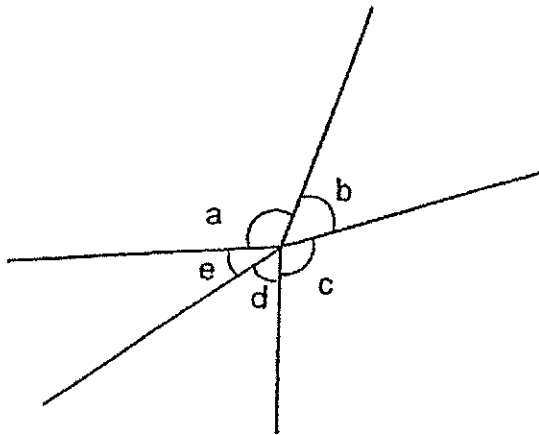
25. Write the decimal represented by A.



26. Find the value of 5.92×6 .

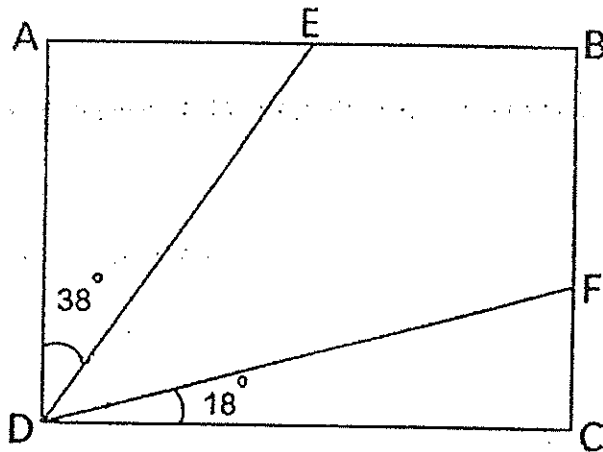
27. Write $\frac{17}{7}$ as a mixed number in its simplest form.

28. In the figure, name the two angles that are greater than 90° .



\angle ___ and \angle ___

29. In the figure shown, ABCD is a rectangle. Find $\angle EDF$.

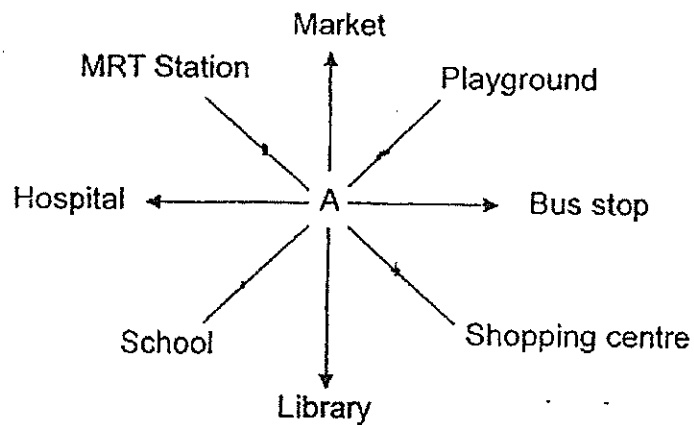


_____ °

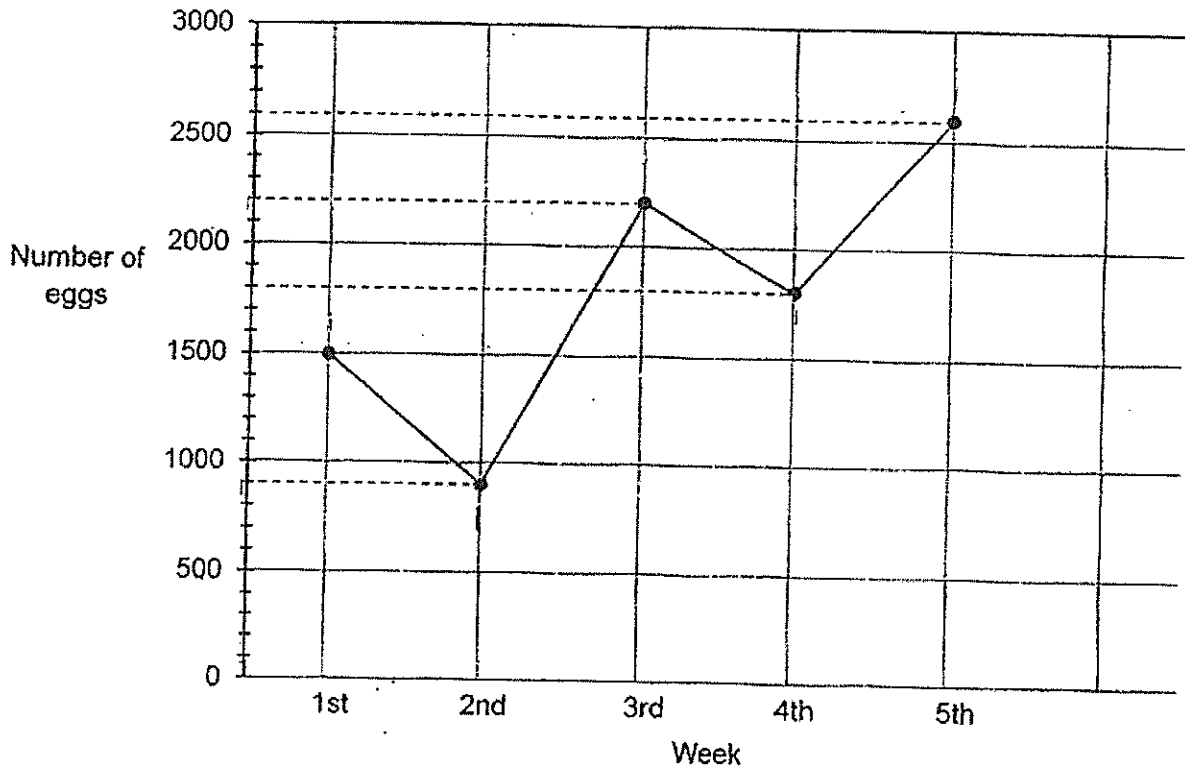
30. Write 0.45 as a fraction in its simplest form.

31. Jonathan went to sleep at 21 40. He slept for 7 h 30 min. At what time did he wake up? (Give your answer using the 24-hour clock)

32. Robert is standing at the point A in the figure below. He is facing the school. Where will he face if he makes a $\frac{3}{4}$ -turn in an anti-clockwise direction?



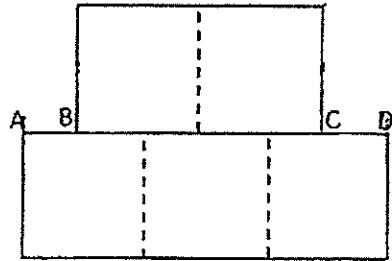
The graph below shows the number of eggs a baker used in 5 weeks. Study the graph carefully and answer Questions 33 and 34.



33. What was the increase in the number of eggs used between the 4th and the 5th week?

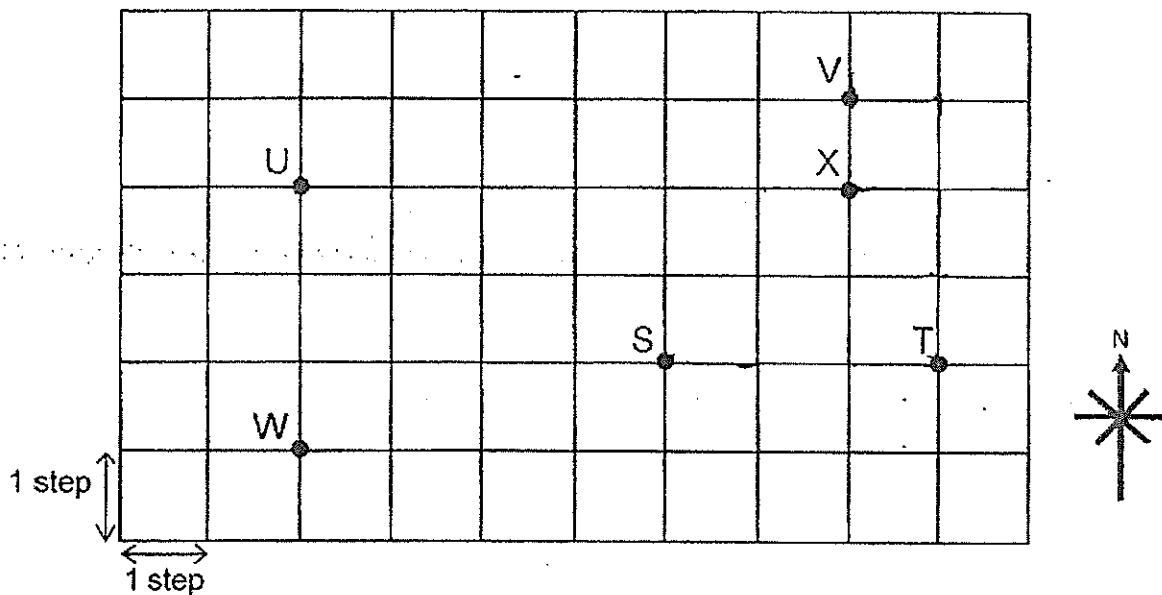
34. The baker used 8 eggs to bake a cake. How many cakes did he bake altogether from the 1st week to the 3rd week?

35. The figure below is made up of 5 identical squares of sides 5 cm. Find the total length of AB and CD.



cm

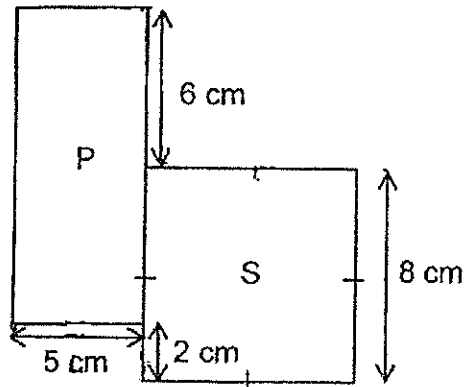
Study the diagram below and answer Question 36.




36. Nancy was at Point S. She walked 3 steps to the east, 3 steps to the north, 1 step to the west and then 1 step due south. At which point would she have landed?

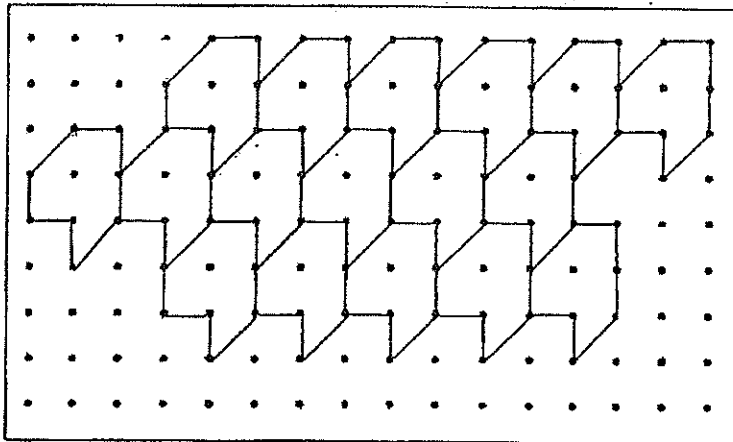
Point _____

37. The figure below is made up of a rectangle P and a square S. Find the perimeter of the figure.



cm

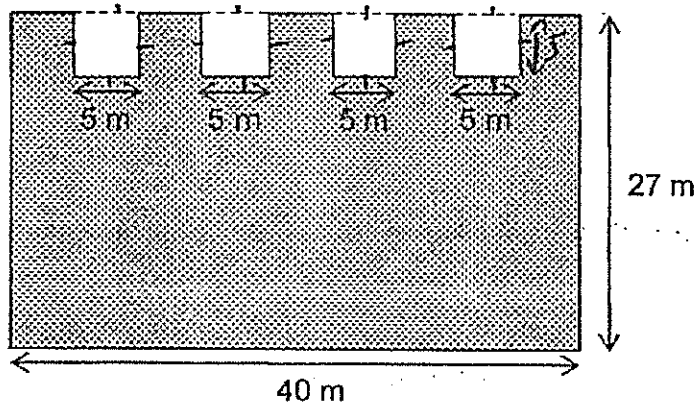
38. In the tessellation below, the unit shape is . Extend the tessellation in the space provided by adding 4 more unit shapes.



39. Pole S is twice as long as Pole T. Pole U is 148 cm shorter than Pole S. Pole U is 930 cm long. What is the length of Pole T?

cm

40. Mrs Lim has a rectangular garden fully covered with grass. 4 squares of grass were removed as shown in the diagram below. What is the area of the garden covered with grass now?



m²

Section C (5 × 4 marks)

Work out the following sums carefully. Show each step of your working clearly as marks will be given for working and relevant statements.

41. Ash bought 8 packets of flour. The mass of each packet of flour was the same. He used some flour to make 9 loaves of bread. He used 1.25 kg of flour for each loaf of bread.
- What was the total mass of flour Ash used to bake 9 loaves of bread?
 - Ash then had 3.15 kg of flour left. What was the mass of each packet of flour he bought?

42. Mrs Wong made $\frac{4}{5}$ litre of apple juice. She gave Raj $\frac{1}{5}$ litre of apple juice.

She gave some apple juice to Oliver. Oliver had $\frac{3}{10}$ litre of apple juice more than Raj.

- How much apple juice did Oliver and Raj have altogether?
- How much apple juice had Mrs Wong left?

--

43. Licia, Krisnam and Imran collected a total of 2371 stamps. Licia collected three times as many stamps as Krisnam. Imran collected 138 more stamps than Licia. How many stamps did Imran collect?

44. Andy had 460 toy cars and some toy motorcycles. He gave away 96 toy motorcycles. In the end, he had 4 times as many toy cars as toy motorcycles. How many toy motorcycles did Andy have at first?

45. In a bookshop, 2 pens and 3 files cost \$11.20. Joseph bought 3 pens and 4 files at \$15.40 from the book shop.
- (a) Find the cost of 1 pen and 1 file.
 - (b) What was the cost of 1 file?

End of Booklet B

--

Ans

EXAM PAPER 2015

SCHOOL : ANGLO-CHINESE SCHOOL

SUBJECT : P4 MATHEMATICS

TERM : SA2

ORDER CALL : MR GAN @ 92998971 92475053 86065443

Q1	Q2	Q3	Q4	Q5	Q6	Q7	Q8	Q9	Q10
3	4	4	4	1	1	3	2	2	2
Q11	Q12	Q13	Q14	Q15	Q16	Q17	Q18	Q19	Q20
3	4	3	2	4	1	1	4	1	1

21) 28046

22) $2480 \times 7 = \underline{17360}$

23) $4/9, 5/11$

24) $1 - 1/8 - 6/8 = \underline{1/8}$

25) $0.7 - 0.6 = 0.1$

$0.1 \div 10 = 0.01$

$8 \times 0.01 = 0.08$

$0.6 + 0.08 = \underline{0.68}$

26) $5.92 \times 6 = \underline{35.52}$

27) $17/7 = \underline{2\ 3/7}$

28) $\angle c$ and $\angle a$

29) $38 + 18 = 56$

$90 - 56 = \underline{34^\circ}$

30) $45/100 = \underline{9/20}$

31) 0510

32) MRT Station

33) $2600 - 1800 = \underline{800}$

34) $1500 + 900 + 2200 = 4600$

$4600 \div 8 = \underline{575}$

35) $5 \times 3 = 15$

$5 \times 2 = 10$

$15 - 10 = \underline{5}$

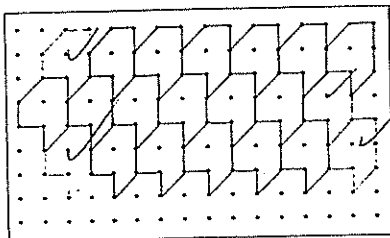
36) Point X

37) $6 + 8 = 14$

$14 + 13 = 27$

$27 \times 2 = \underline{54}$

38)



$$39) 930 + 148 = 1078$$

$$1078 \div 2 = \underline{539}$$

$$40) 40 \times 27 = 1080$$

$$5 \times 5 = 25$$

$$4 \times 25 = 100$$

$$1080 - 100 = \underline{980}$$

$$41) a) 9 \times 1.25\text{kg} = \underline{11.25 \text{ kg}}$$

$$b) 11.25\text{kg} + 3.15\text{kg} = 14.40\text{kg}$$

$$14.40\text{kg} \div 8 = \underline{1.8\text{kg}}$$

$$42) a) 4/5 = 8/10$$

$$1/5 = 2/10$$

$$2/10 + 3/10 = 5/10$$

$$2/10 + 5/10 = \underline{7/10}$$

$$b) 8/10 - 7/10 = \underline{1/10}$$

$$43) 2371 - 138 = 2233$$

$$2233 \div 7 = 319$$

$$3 \times 319 = 957$$

$$957 + 138 = \underline{1095}$$

$$44) 460 \div 4 = 115$$

$$115 + 96 = \underline{211}$$

$$45) a) 2P + 3F = \$11.20$$

$$6P + 9F = \$33.60$$

$$3P + 4F = \$15.40$$

$$6P + 8F = \$30.80$$

$$F = \$2.80$$

$$3F = 3 \times \$2.80$$

$$= \$8.40$$

$$2P = \$11.20 - \$8.40 = \$2.80$$

$$P = \$2.80 \div 2 = \$1.40$$

$$P + F = \$2.80 + \$1.40 = \underline{\$4.20}$$

$$b) \$2.80$$