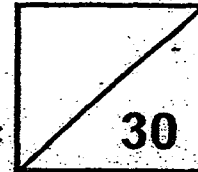




Rosyth School
Second Topical Test for 2015
SCIENCE
Primary 3

Name: _____

Total
Marks:



Class: Pr 3 _____

Register No. _____

Duration: 30 minutes

Date: 27 August 2015

Parent's Signature: _____

Instructions to Pupils:

1. Do not open the booklet until you are told to do so.
2. Follow all instructions carefully.
3. This paper consists of 2 parts, Part I and Part II.
4. For questions 1 to 10, write the correct answer in the brackets provided.
5. For questions 11 and 12, give your answers in the spaces provided in Part II.

	Maximum	Marks Obtained
Part I	10 marks	
Part II	5 marks	
Total	15 marks	

* This booklet consists of 8 pages.

This paper is not to be reproduced in part or whole without the permission of the Principal.

Practical Test

	Maximum	Marks Obtained
Total	15 marks	

Part I (10 MARKS)

For each question from 1 to 10, four options are given. One of them is the correct answer. Make your choice (1, 2, 3 or 4) and write the correct answer in the brackets provided. Each correct answer will score one mark.

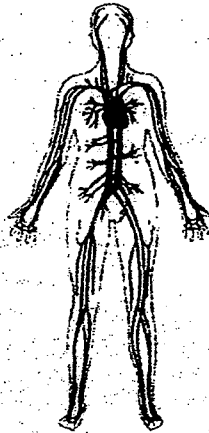
1. Study the table below.

Digestive System	Circulatory System	Respiratory System
stomach	heart	lungs
small intestine	blood vessels	rib cage

Which of the following is grouped ~~wrongly~~?

- (1) heart
 - (2) lungs
 - (3) rib cage
 - (4) stomach
- ()

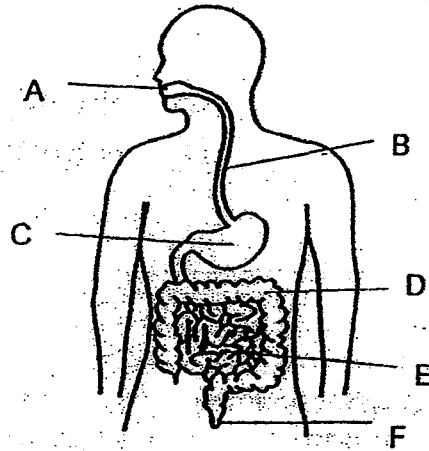
2. Which of the following statement(s) describe(s) the system below?



- A. It removes undigested food from the body.
- B. It breaks down food into smaller substances.
- C. It carries digested food, water and oxygen to all parts of the body.
- D. It takes oxygen into the body and removes carbon dioxide from the body.

- 1) C only
 - 2) D only
 - 3) A and B only
 - 4) C and D only
- ()

3. Study the diagram below.

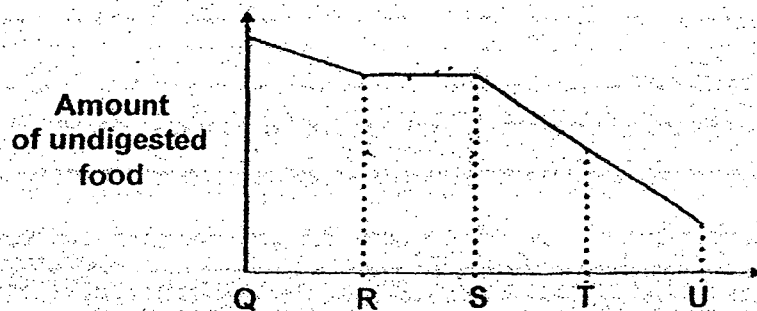


Which of the following shows how food travels through the digestive system before digested food enters the bloodstream?

- (1) A → B → C → D
- (2) A → B → C → E
- (3) B → C → E → D
- (4) C → E → D → F

()

4. The graph below shows the amount of undigested food as it travels through the human digestive system.



Based on the graph above, which part represents the gullet?

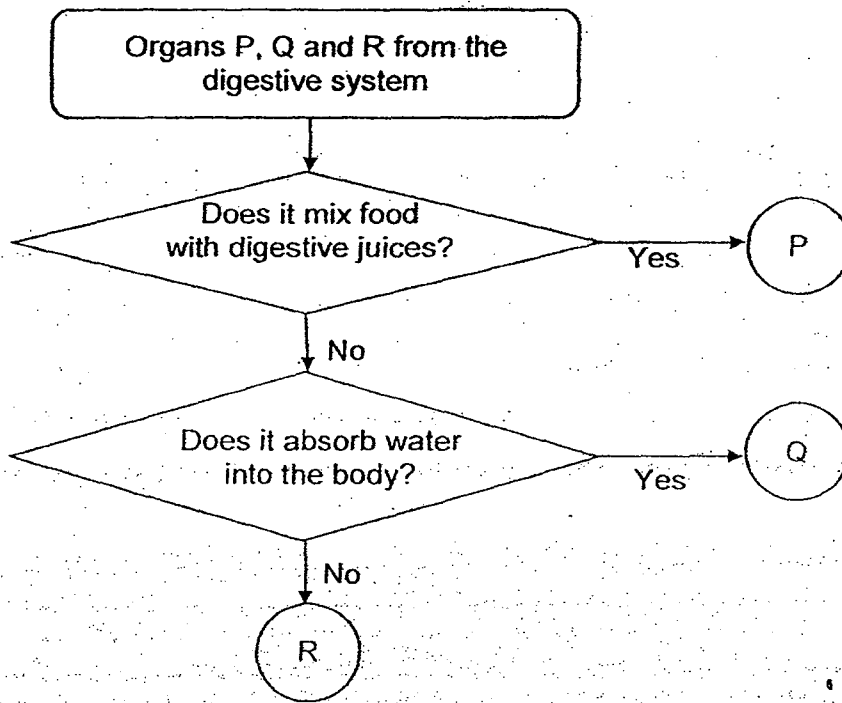
- (1) QR
- (2) RS
- (3) ST
- (4) TU

()

5. Beatrice has been passing out watery waste. Which part of the digestive system is not working well?

- (1) gullet
- (2) stomach
- (3) small intestine
- (4) large intestine

6. Study the chart below.

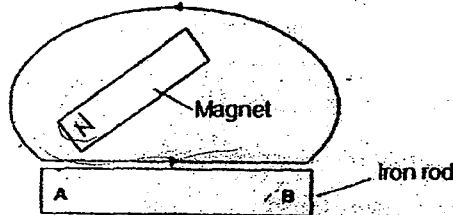


Which of the following is correct?

	P	Q	R
1)	gullet	small intestine	mouth
2)	mouth	stomach	anus
3)	small intestine	large intestine	gullet
4)	stomach	gullet	small intestine

7. Melvin wanted to magnetise an iron rod AB using a magnet.

He stroked the rod 20 times in the same direction with the magnet as shown in the diagram below.



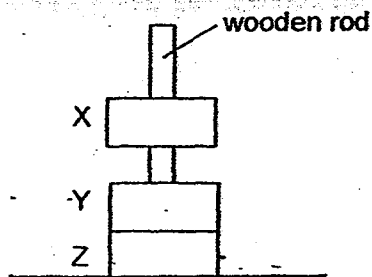
To find out if the rod was magnetised, Melvin used the rod to attract some steel nails. It attracted two steel nails.

Melvin repeated the above experiment using another similar iron rod.

What should he do to the iron rod so that it could attract more steel nails?

- (1) Stroke it from A to B for 5 times.
- (2) Stroke it from A to B for 30 times
- (3) Stroke it from B to A for 20 times.
- (4) Stroke it with both poles of the magnet for 20 times each. ()

8. Albert placed 3 metal rings, X, Y and Z, through a wooden rod as shown below.



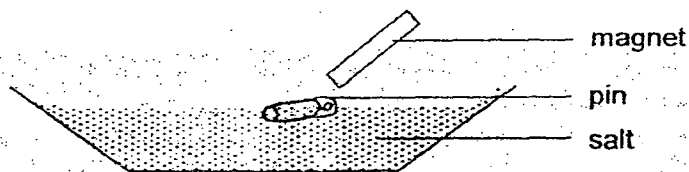
He made the following observations:

- A: Metal rings X and Y did not touch each other.
- B: Metal rings Y and Z touched each other.

Based on his observations above, which of the following(s) is/are definitely magnet.

- (1) X only
- (2) Z only
- (3) X and Y only
- (4) X, Y and Z ()

9. Tricia tried to remove a pin from a tray of salt by using a bar magnet as shown in the diagram below.



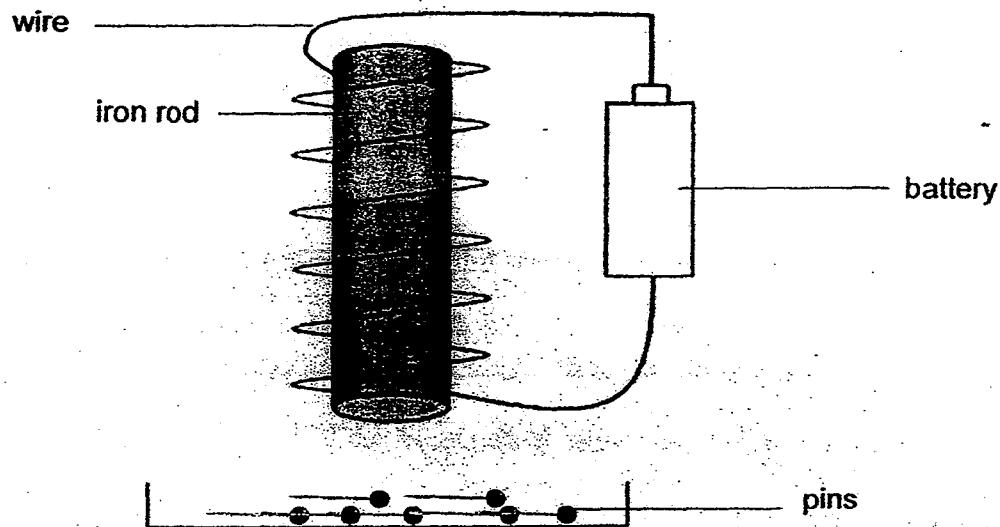
She observed that she could not remove the pin.

Which of the following are possible reasons for the above observation?

- A: The magnet was not placed in the N-S direction.
- B: The pin was not made of a magnetic material.
- C: The magnetic strength of the bar magnet was too weak.

- (1) A and B only
- (2) A and C only
- (3) B and C only
- (4) A, B and C ()

10. Benson made an electromagnet using an iron rod as shown below. The iron rod was able to attract only four pins.



Which of the following(s) should he do to increase the number of pins that the electromagnet can attract?

- A: Add one more battery to the set-up
- B: Replace the iron rod with a copper rod.
- C: Increase the number of coils around the iron rod.

(1) C only

(2) A and C only

()

(3) B and C only

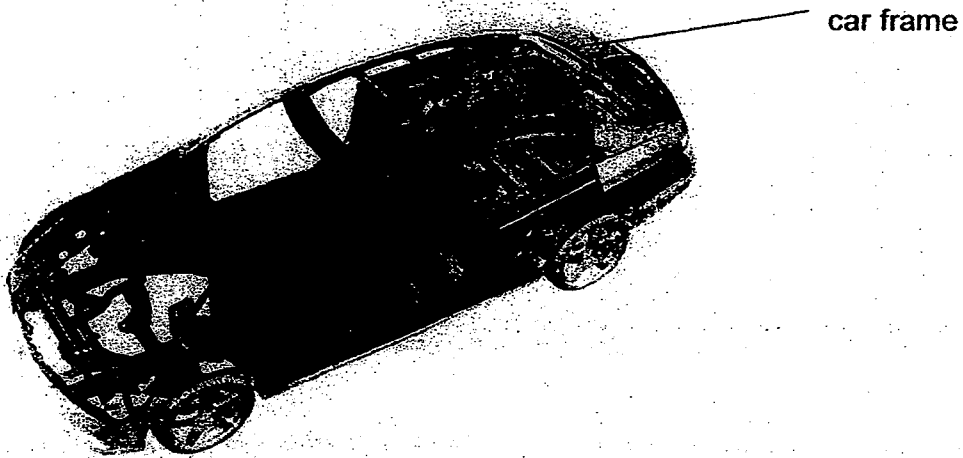
(4) A, B and C

End of Part I

Part II (5 MARKS)

For questions 11 and 12, write your answers in the blanks provided.

11. Study the car frame as shown in the diagram below.

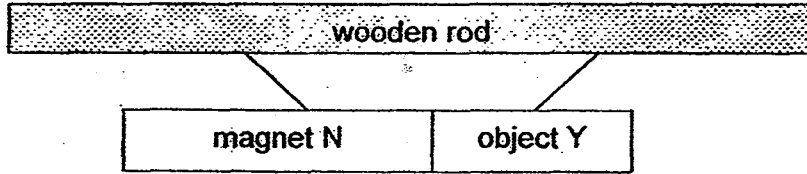


a) Name the human body system that serves the same function as the car frame.

[1]

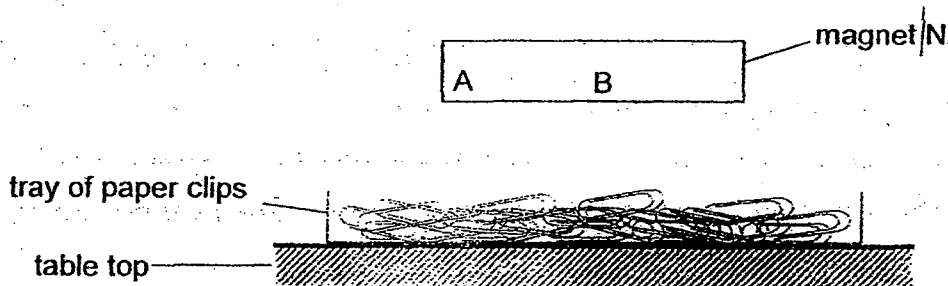
b) How is the function of the car frame similar to the human system in part (a)? [1]

12. Siti observed the positions of magnet N and object Y when hung freely on a wooden rod.



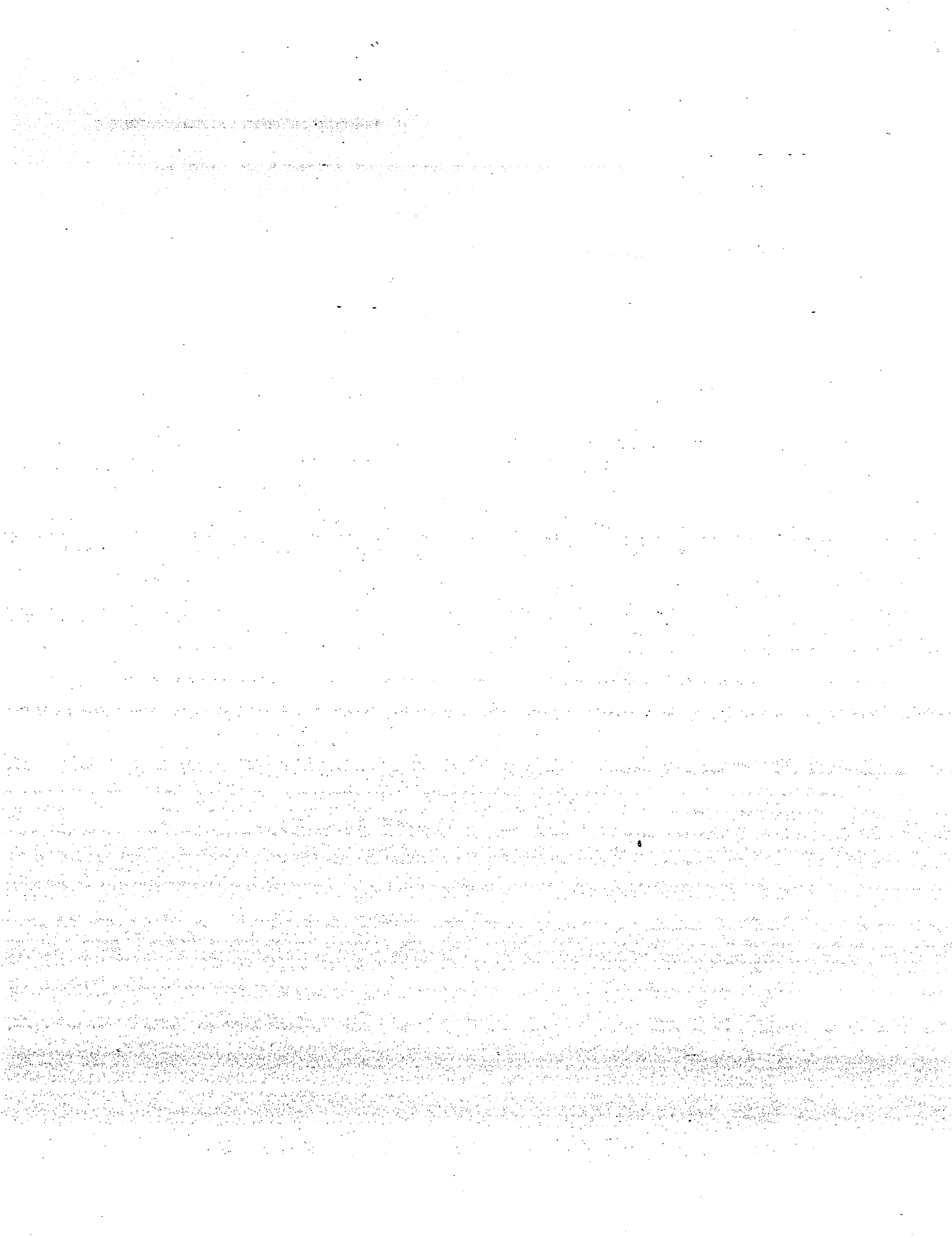
- a) Siti said that object Y is a magnet based on the observation above. Do you agree? Explain why. [1]

Siti then moved magnet N near a tray of paper clips as shown below.



- b) Which part of the magnet (A or B) attracted more paper clips? Explain why. [2]

End of Part II



EXAM PAPER 2015

LEVEL : PRIMARY 3

SCHOOL : ROSYTH SCHOOL

SUBJECT : SCIENCE

TERM : CA2

Q1	Q2	Q3	Q4	Q5	Q6	Q7	Q8	Q9	Q10
3	1	2	2	4	3	2	3	3	2

Q11a. Skeletal system Q11b. Both the car frame and the skeletal system gives the shape and supports the car or the body.

Q12a. No, because if object Y is a magnet it will repel.

Q12b. Part A attracted more paper clips because a magnet is the strongest at the poles, and 'A' is at the poles.

THE END

